

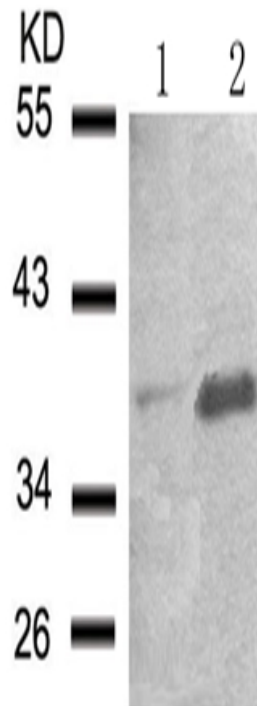
兔抗 NFKBIA (Phospho-Ser32/Ser36)多克隆 抗体

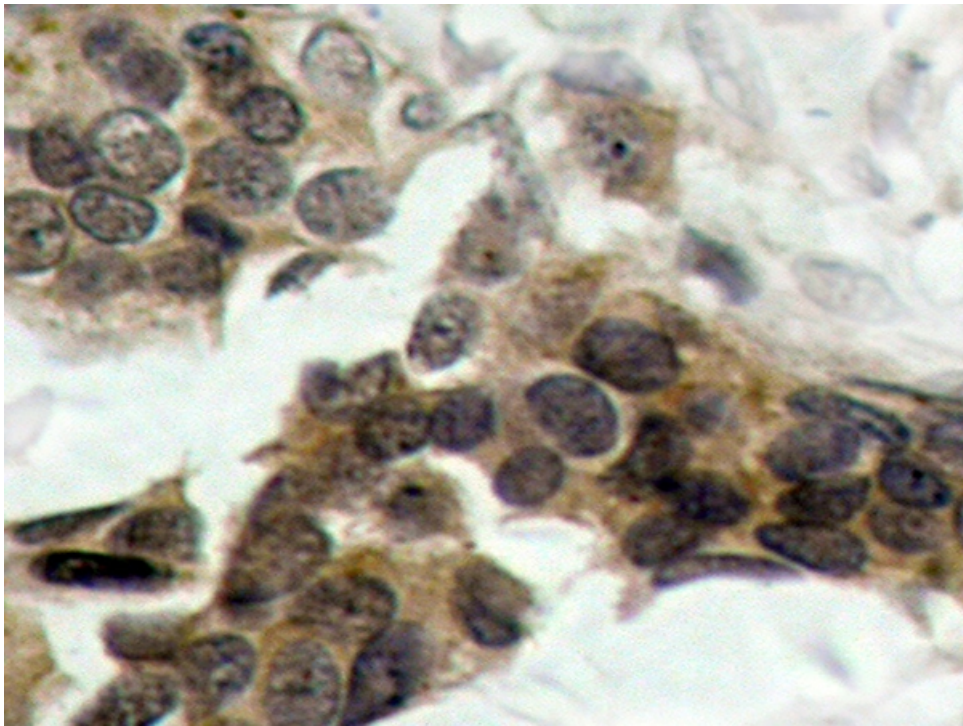
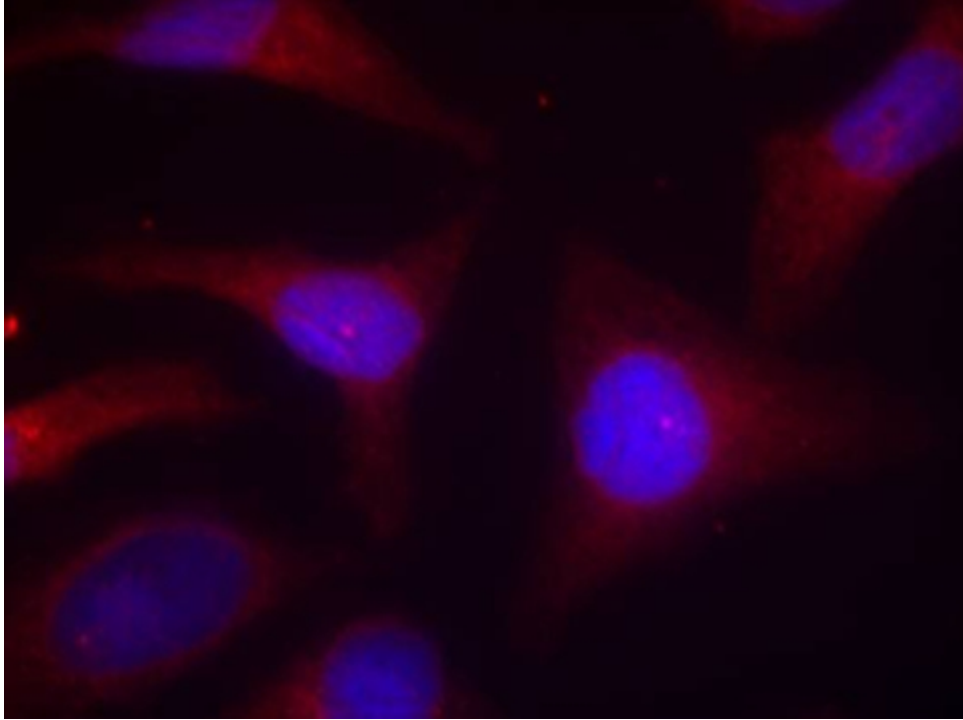
- 中文名称： 兔抗 NFKBIA (Phospho-Ser32/Ser36)多克隆抗体
- 英文名称： Anti-NFKBIA (Phospho-Ser32/Ser36) rabbit polyclonal antibody
- 别名： IKBA; MAD-3; NFKBI
- 相关类别： 一抗
- 储存： 冷冻（-20℃） 避光
- 宿主： Rabbit
- 抗原： NFKBIA (Phospho-Ser32/Ser36)
- 反应种属： Human Mouse
- 标记物： Unconjugate
- 克隆类型： rabbit polyclonal

技术规格

Background:	Inhibits the activity of dimeric NF-kappa-B/REL complexes by trapping REL dimers in the cytoplasm through masking of their nuclear localization signals. On cellular stimulation by immune and proinflammatory responses, becomes phosphorylated promoting ubiquitination and degradation, enabling the dimeric RELA to translocate to the nucleus and activate transcription.
Applications:	WB, IHC, IF
Name of antibody:	NFKBIA (Phospho-Ser32/Ser36)

Immunogen:	Synthetic peptide of human NFKBIA (Phospho-Ser32/Ser36)
Full name:	nuclear factor of kappa light polypeptide gene enhancer in B-cells inhibitor, alpha (Phospho-Ser32/Ser36)
Synonyms:	IKBA; MAD-3; NFKBI
SwissProt:	P25963
IHC positive control:	Human breast carcinoma
IHC Recommend dilution:	50-100
WB Predicted band size:	39 kDa
WB Positive control:	Hela cells untreated or treated with TNF
WB Recommended dilution:	500-1000
Positive control:	Hela cells
Recommended dilution:	100-200





mlbio 梅联生物
Good elisakit producers