

兔抗 NKX3-2 多克隆抗体

中文名称：兔抗 NKX3-2 多克隆抗体

英文名称：Anti-NKX3-2 rabbit polyclonal antibody

别名：NK3 homeobox 2; SMMD; BAPX1; NKX3B; NKX3.2

相关类别：一抗

储存：冷冻（-20℃）

宿主：Rabbit

抗原：NKX3-2

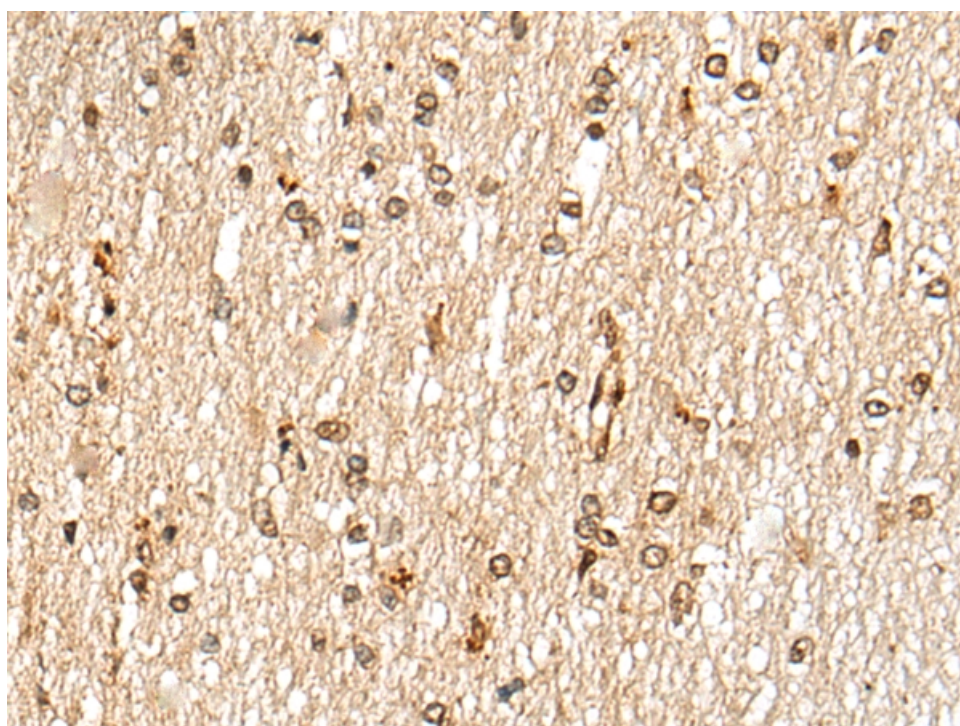
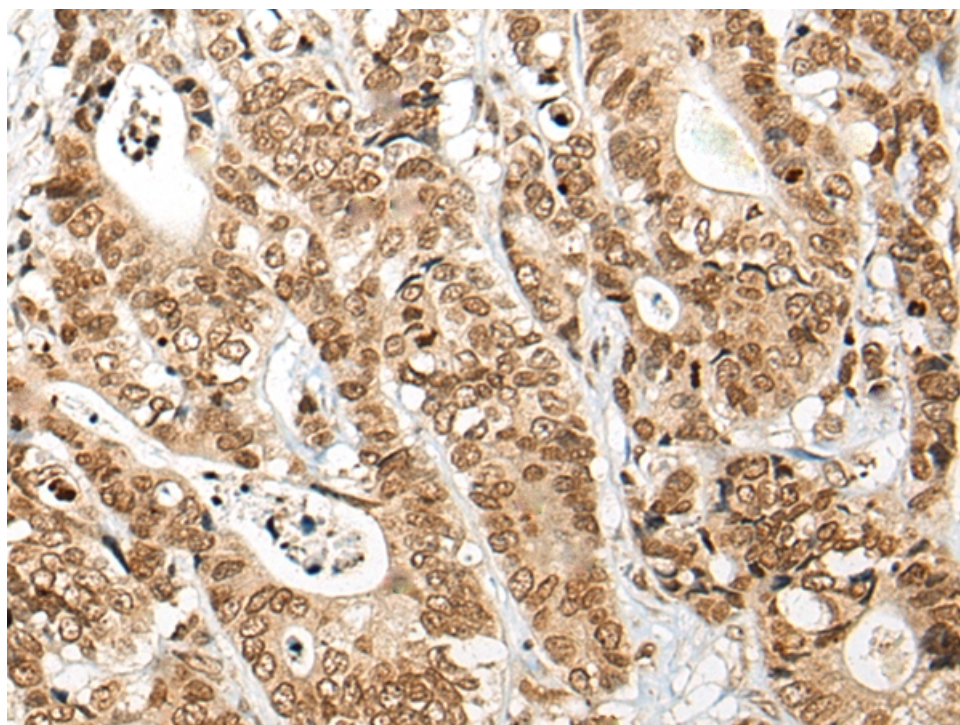
反应种属：Human, Mouse

标记物：Unconjugate

克隆类型：rabbit polyclonal

技术规格

Background:	This gene encodes a member of the NK family of homeobox-containing proteins. The encoded protein may play a role in skeletal development.
Applications:	ELISA, IHC
Name of antibody:	NKX3-2
Immunogen:	Synthetic peptide of human NKX3-2
Full name:	NK3 homeobox 2
Synonyms:	SMMD; BAPX1; NKX3B; NKX3.2
SwissProt:	P78367
ELISA Recommended dilution:	5000-10000
IHC positive control:	Human thyroid cancer and human esophagus cancer
IHC Recommend dilution:	20-100



mlbio 梅联生物
Good elisakit producers