

兔抗 NKX63 多克隆抗体

中文名称：兔抗 NKX6-3 多克隆抗体

英文名称： Anti-NKX6-3 rabbit polyclonal antibody

别名： NKX6.3

相关类别： 一抗

储存： 冷冻（-20℃） 避光

抗原： NKX6-3

宿主： Rabbit

反应种属： Human Mouse

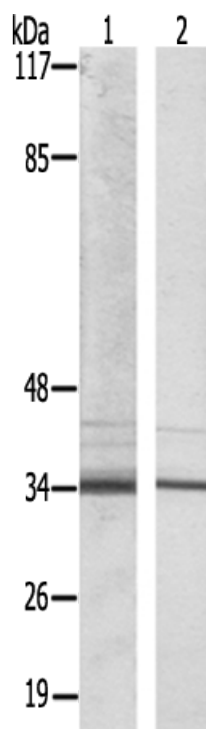
标记物： Unconjugate

克隆类型： Unconjugate

技术规格

Background:	The NKX family of homeodomain proteins controls numerous developmental processes. Members of the NKX6 subfamily, including NKX6-3, are involved in development of the central nervous system (CNS), gastrointestinal tract, and pancreas (Alanentalo et al., 2006 [PubMed 16326147]).
Applications:	WB, IF
Name of antibody:	NKX6-3
Immunogen:	Synthesized peptide derived from internal of human NKX6.
Full name:	NK6 homeobox 3
Synonyms :	NKX6.3
SwissProt:	A6NJ46
WB Predicted band size:	29 kDa

WB Positive control:	K562 cells and COS7 cells lysates
WB Recommended dilution:	500-3000
IF positive control:	Huvec cells
IF Recommend dilution:	100-500



mlbio 梅联生物
Good elisakit producers

