

兔抗 RGR 多克隆抗体

中文名称: 兔抗 RGR 多克隆抗体

英文名称: Anti-RGR rabbit polyclonal antibody

别名: retinal G protein coupled receptor; RP44

储存: 冷冻 (-20℃)

抗原: RGR

宿主: Rabbit

反应种属: Human, Mouse

相关类别: 一抗

标记物: Unconjugate

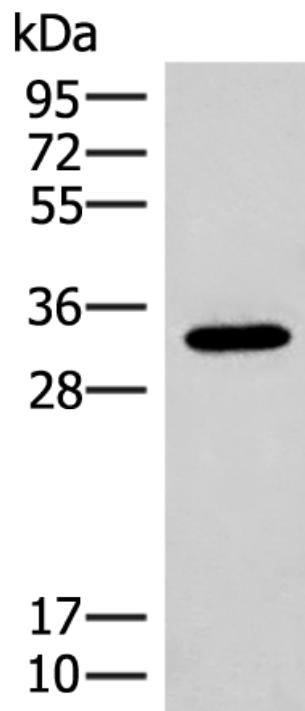
克隆类型: rabbit polyclonal

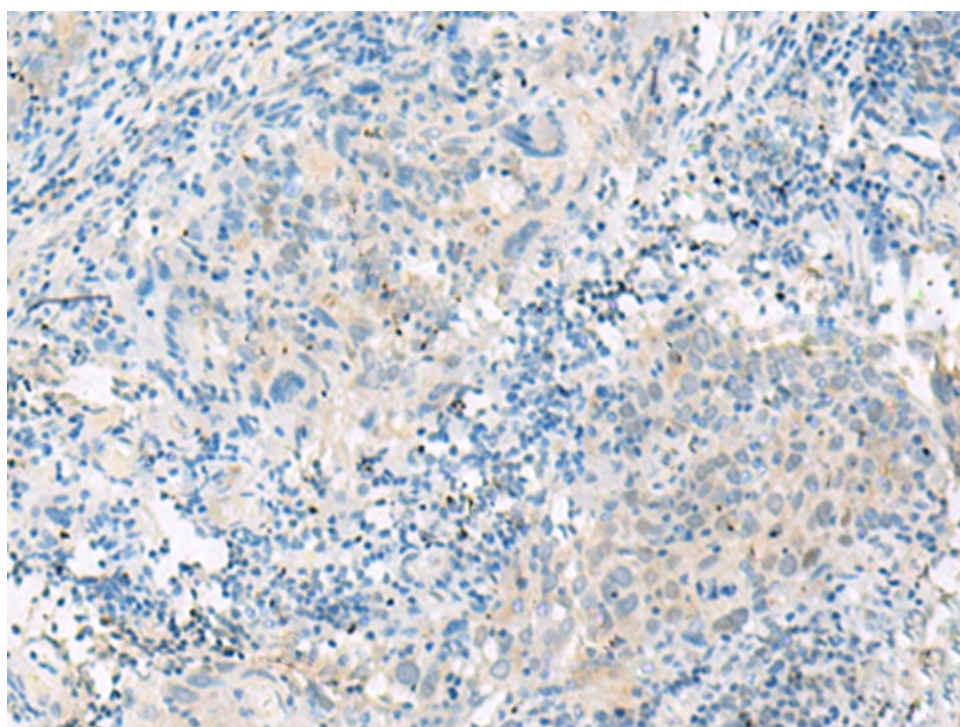
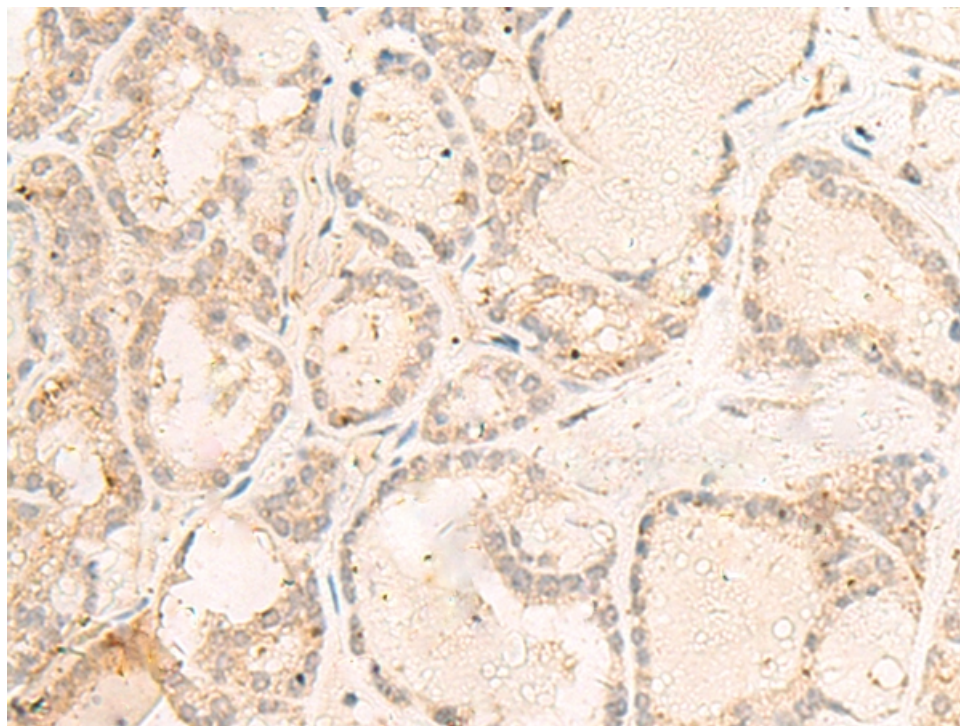
技术规格

Background:

This gene encodes a putative retinal G-protein coupled receptor. The gene is a member of the opsin subfamily of the 7 transmembrane, G-protein coupled receptor 1 family. Like other opsins which bind retinaldehyde, it contains a conserved lysine residue in the seventh transmembrane domain. The protein acts as a photoisomerase to catalyze the conversion of all-trans-retinal to 11-cis-retinal. The reverse isomerization occurs with rhodopsin in retinal photoreceptor cells. The protein is exclusively expressed in tissue adjacent to retinal photoreceptor cells, the retinal pigment epithelium and Mueller cells. This gene may be assoc

	iated with autosomal recessive and autosomal dominant r etinitis pigmentosa (arRP and adRP, respectively). Alternati ve splicing results in multiple transcript variants encoding different isoforms.
Applications:	ELISA, IHC
Name of antibody:	RGR
Immunogen:	Synthetic peptide of human RGR
Full name:	retinal G protein coupled receptor
Synonyms:	RP44
SwissProt:	P47804
ELISA Recommended dilution:	5000-10000
IHC positive control:	Human thyroid cancer and Human cervical cancer
IHC Recommend dilution:	20-100





mlbio 梅联生物
Good elisakit producers