

兔抗 ROMO1 多克隆抗体

中文名称: 兔抗 ROMO1 多克隆抗体

英文名称: Anti-ROMO1 rabbit polyclonal antibody

别名: reactive oxygen species modulator 1; MTGM; MTGMP; C20orf52; bA353C18.2

储存: 冷冻 (-20℃)

抗原: ROMO1

宿主: Rabbit

反应种属: Human, Mouse

相关类别: 一抗

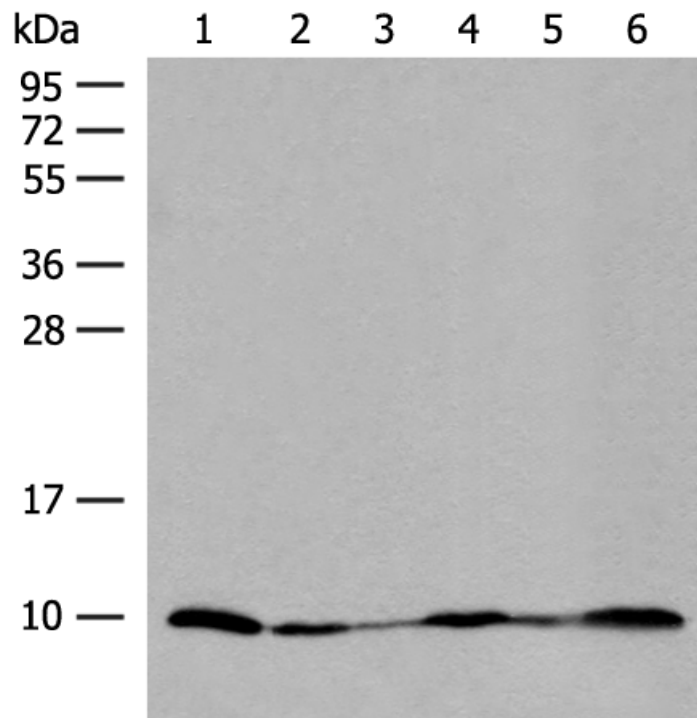
标记物: Unconjugate

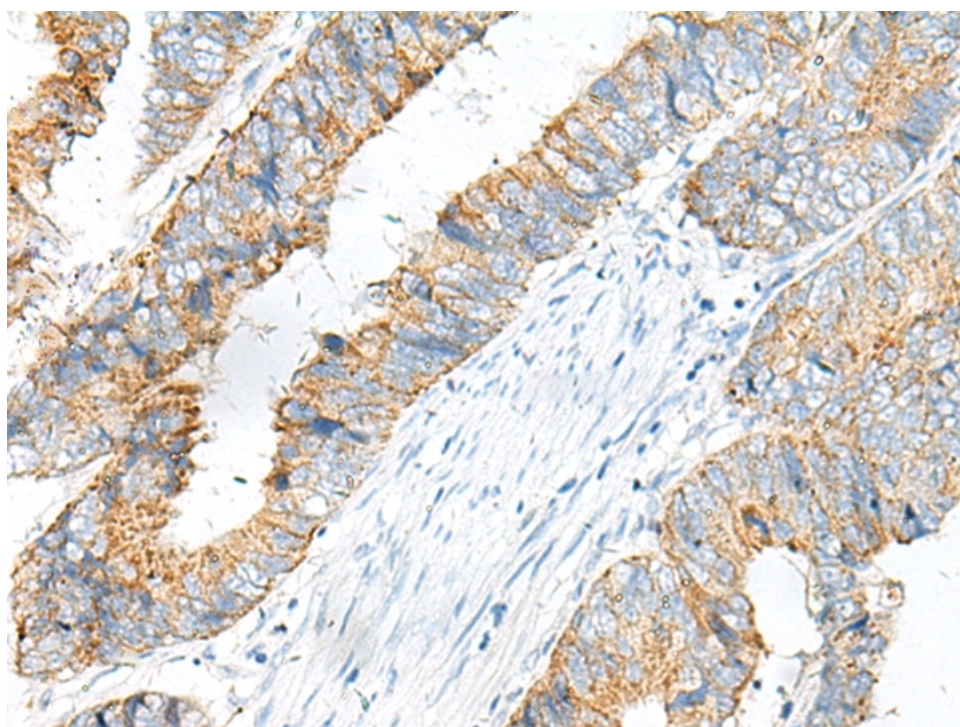
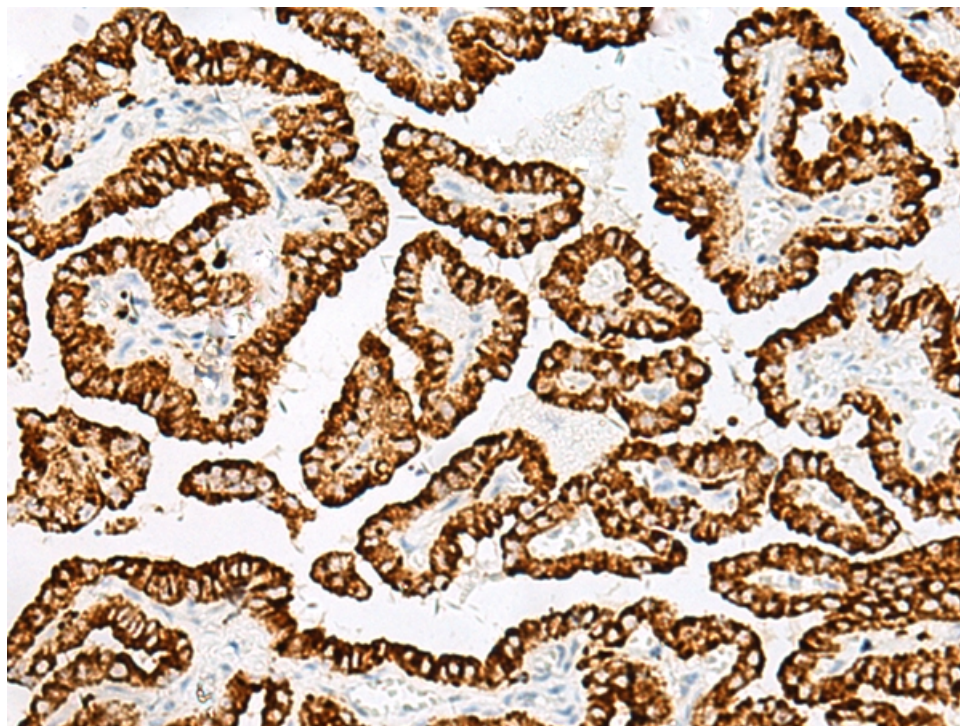
克隆类型: rabbit polyclonal

技术规格

Background:	The protein encoded by this gene is a mitochondrial membrane protein that is responsible for increasing the level of reactive oxygen species (ROS) in cells. The protein also has antimicrobial activity against a variety of bacteria by inducing bacterial membrane breakage.
Applications:	ELISA, WB, IHC
Name of antibody:	ROMO1
Immunogen:	Synthetic peptide of human ROMO1
Full name:	reactive oxygen species modulator 1
Synonyms:	MTGM; MTGMP; C20orf52; bA353C18.2
SwissProt:	P60602

ELISA Recommended dilution:	5000-10000
IHC positive control:	Human thyroid cancer and Human colorectal cancer
IHC Recommend dilution:	30-150
WB Predicted band size:	8 kDa
WB Positive control:	Mouse heart tissue, Human heart tissue, HEPG2 cell, P C-3 cell, 231 cell and 293T cell lysates
WB Recommended dilution:	200-1000





mlbio 梅联生物
Good elisakit producers