

兔抗 NXNL1 多克隆抗体

中文名称：兔抗 NXNL1 多克隆抗体

英文名称：Anti-NXNL1 rabbit polyclonal antibody

别名：nucleoredoxin like 1; RDCVF; TXNL6

相关类别：一抗

储存：冷冻（-20℃）

宿主：Rabbit

抗原：NXNL1

反应种属：Human

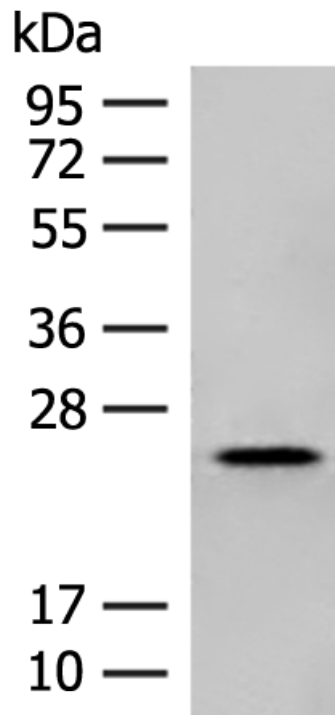
标记物：Unconjugate

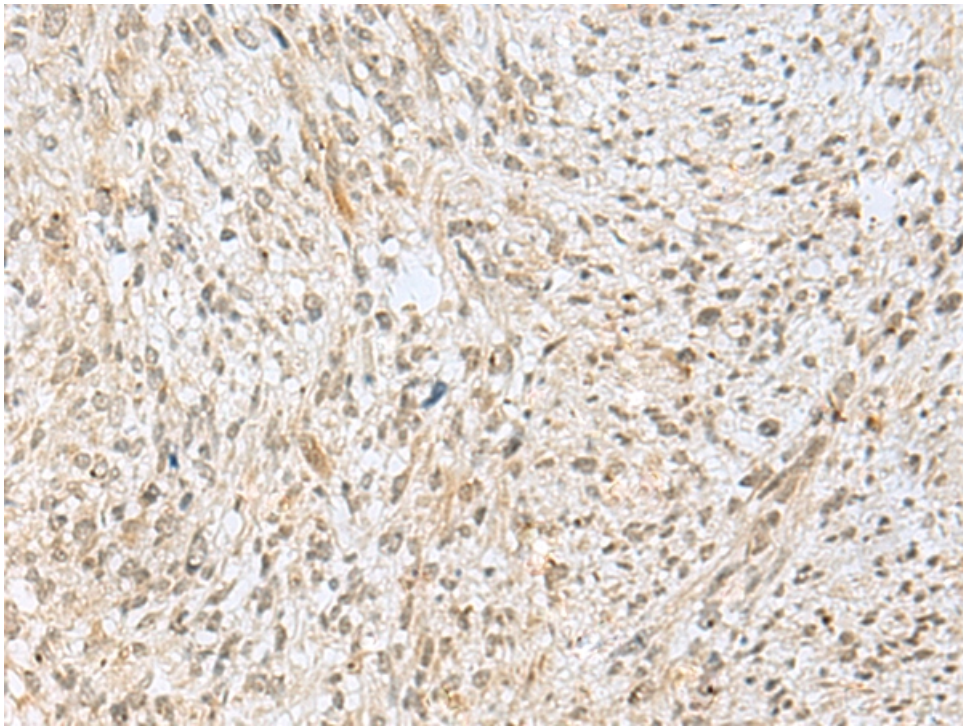
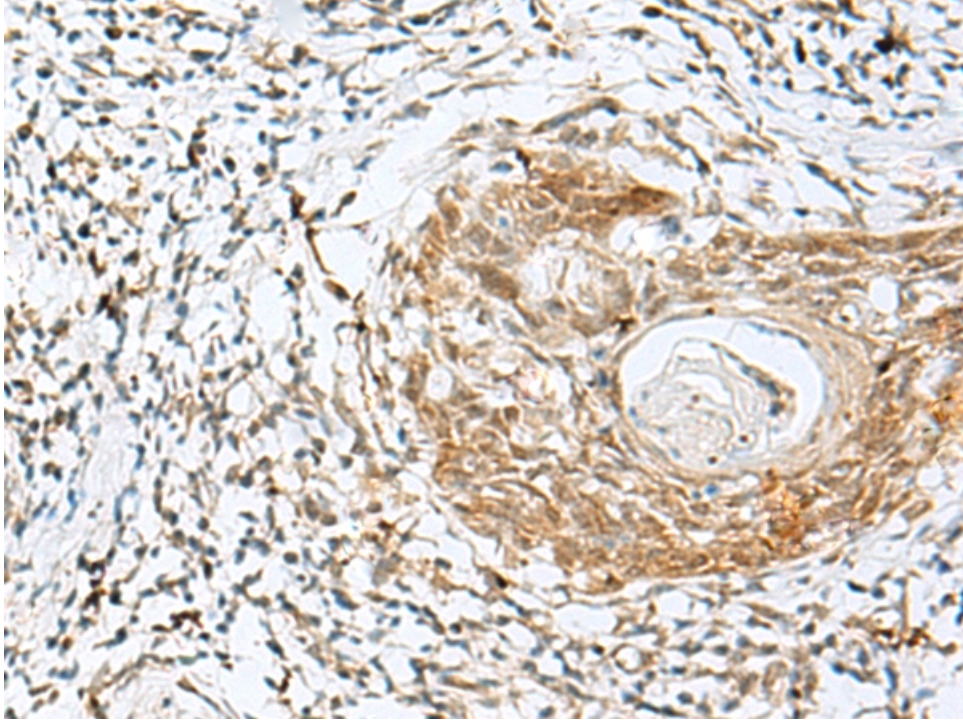
克隆类型：rabbit polyclonal

技术规格

Background:	Retinitis pigmentosa (RP) is a disease that leads to blindness by degeneration of cone photoreceptors. Rods produce factors required for cone viability. The protein encoded by this gene is one of those factors and is similar to a truncated form of thioredoxin. This gene has been proposed to have therapeutic value against RP.
Applications:	ELISA, IHC
Name of antibody:	NXNL1
Immunogen:	Fusion protein of human NXNL1
Full name:	nucleoredoxin like 1
Synonyms:	RDCVF; TXNL6
SwissProt:	Q96CM4
ELISA Recommended dilution:	5000-10000

on:	
IHC positive control:	Human cervical cancer and Human esophagus cancer
IHC Recommend dilution:	30-150





mlbio 梅联生物
Good elisakit producers