

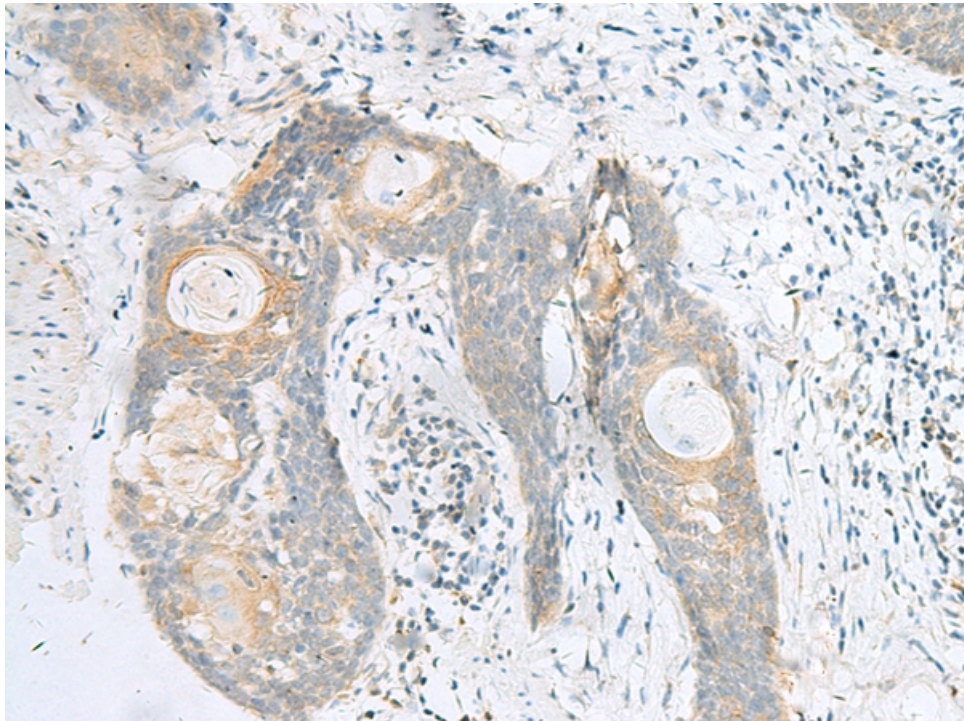
兔抗 PAIP2 多克隆抗体

中文名称:	兔抗 PAIP2 多克隆抗体
英文名称:	Anti-PAIP2 rabbit polyclonal antibody
别名:	poly(A) binding protein interacting protein 2; PAIP-2; PAIP2A
抗原:	PAIP2
储存:	冷冻 (-20℃)
宿主:	Rabbit
反应种属:	Human, Mouse, Rat
相关类别:	一抗
标记物:	Unconjugate
克隆类型:	rabbit polyclonal

技术规格

Background:	Acts as a repressor in the regulation of translation initiation of poly(A)-containing mRNAs. Its inhibitory activity on translation is mediated via its action on PABPC1. Displaces the interaction of PABPC1 with poly(A) RNA and competes with PAIP1 for binding to PABPC1. Its association with PABPC1 results in disruption of the cytoplasmic poly(A) RNP structure organization.
Applications:	ELISA, IHC
Name of antibody:	PAIP2
Immunogen:	Synthetic peptide of human PAIP2
Full name:	poly(A) binding protein interacting protein 2

Synonyms:	PAIP-2; PAIP2A
SwissProt:	Q9BPZ3
ELISA Recommended dilution:	5000-10000
IHC positive control:	Human tonsil and Human esophagus cancer
IHC Recommend dilution:	20-100



mlbio 梅联生物
Good elisakit producers

