

## 兔抗 S1PR2 多克隆抗体

中文名称：兔抗 S1PR2 多克隆抗体

英文名称：Anti-S1PR2 rabbit polyclonal antibody

别名：sphingosine-1-phosphate receptor 2; EDG5; H218; LPB2; S1P2; AGR16; EDG-5; DFNB68; Gpcr13

相关类别：一抗

储存：冷冻 (-20℃)

抗原：S1PR2

宿主：Rabbit

反应种属：Human

标记物：Unconjugate

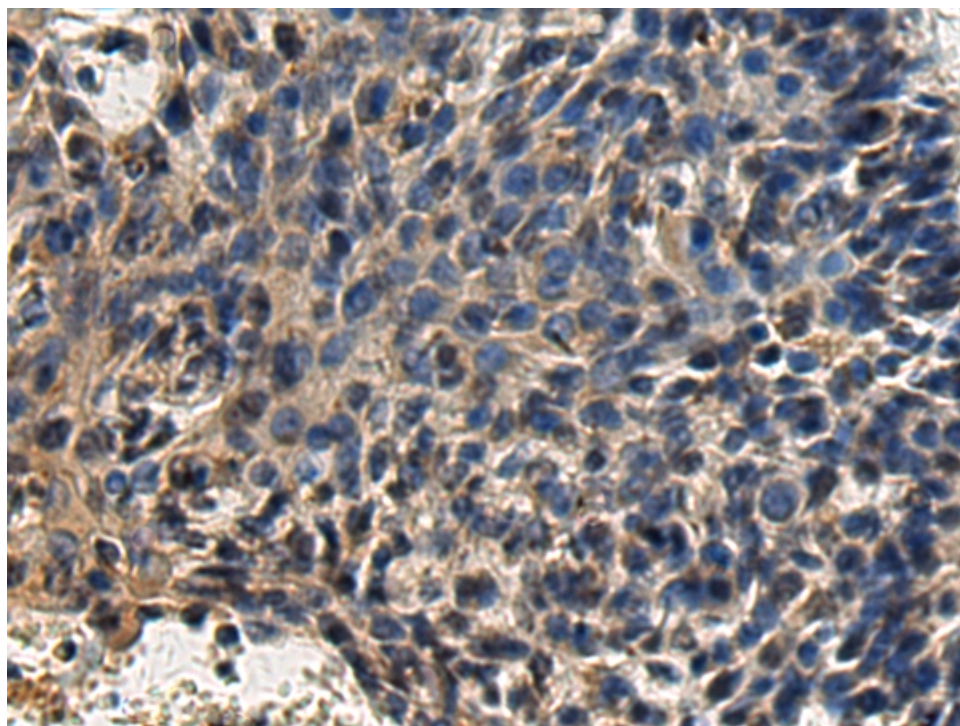
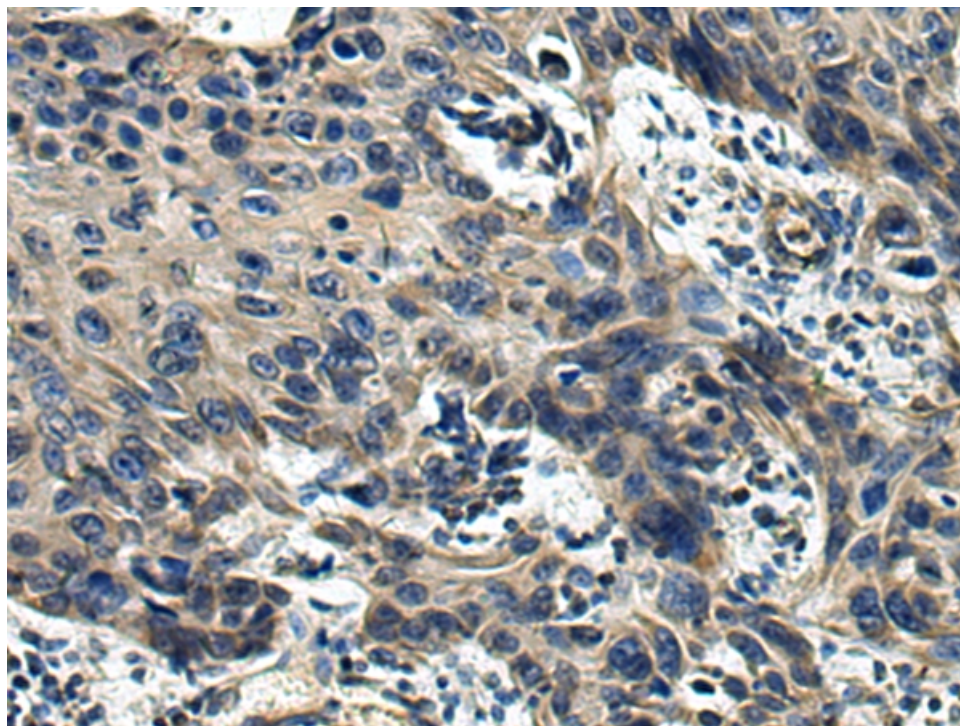
克隆类型：rabbit polyclonal

### 技术规格

#### Background:

This gene encodes a member of the G protein-coupled receptors, as well as the EDG family of proteins. The encoded protein is a receptor for sphingosine 1-phosphate, which participates in

	cell proliferation, survival, and transcriptional activation. Defects in this gene have been associated with congenital profound deafness. [provided by RefSeq, Mar 2016]
<b>Applications:</b>	ELISA, IHC
<b>Name of antibody:</b>	S1PR2
<b>Immunogen:</b>	Synthetic peptide of human S1PR2
<b>Full name:</b>	sphingosine-1-phosphate receptor 2
<b>Synonyms:</b>	EDG5; H218; LPB2; S1P2; AGR16; EDG5; DFNB68; Gpcr13
<b>SwissProt:</b>	O95136
<b>ELISA Recommended dilution:</b>	5000-10000
<b>IHC positive control:</b>	Human esophagus cancer and Human thyroid cancer
<b>IHC Recommend dilution:</b>	50-100



**mlbio** 梅联生物  
Good elisakit producers