

兔抗 SAA4 多克隆抗体

- 中文名称： 兔抗 SAA4 多克隆抗体
- 英文名称： Anti-SAA4 rabbit polyclonal antibody
- 别名： CSAA; C-SAA
- 相关类别： 一抗
- 储存： 冷冻（-20℃）
- 宿主： Rabbit
- 抗原： SAA4
- 反应种属： Human, Mouse
- 标记物： Unconjugate
- 克隆类型： rabbit polyclonal

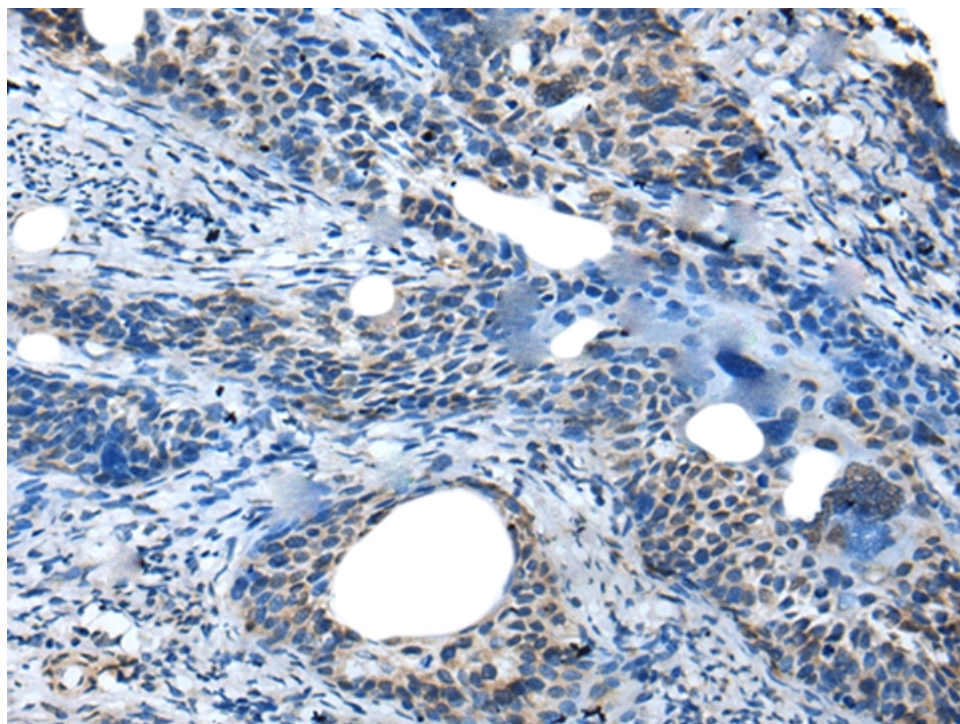
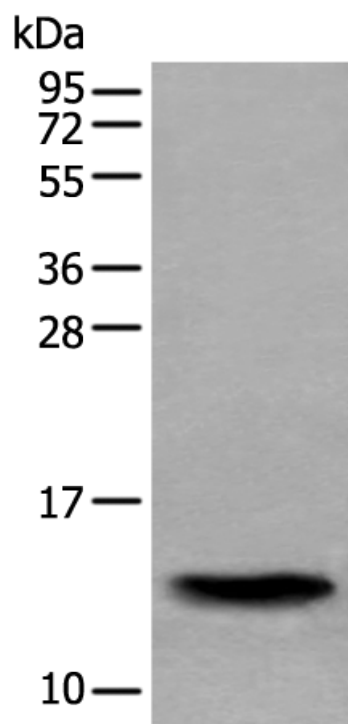
技术规格

Background:

SAA4 is a member of the SAA family. SAA proteins are family of apolipoproteins of high density lipoprotein (HDL). They can be separated into two distinct groups. First group (SAA1, SAA2, and SAA3) consists of acute pha

se reactant whose expression level increase in the blood in a response to trauma, infection, inflammation, and neoplasia. These acute phase SAAs associates with HDL during inflammation and remodel the HDL particle by displacing Apo-A1. The second distinct group consists of SAA4 and SAA5 which exist as the minor apolipoproteins on HDL, but this group of SAA constitutes more than 90% of all the SAA during homeostasis, and it is thought to play a role in the normal functioning of the HDL particle. SAA4 is a constitutively expressed protein which expressed only in humans and mice. It is connected almost completely with lipoproteins of the high density range. The physiological function of SAA4 is unknown, and its serum concentration has no association with those of other major apolipoproteins.

Applications:	ELISA, WB, IHC
Name of antibody:	SAA4
Immunogen:	Full length fusion protein
Full name:	serum amyloid A4, constitutive
Synonyms:	CSAA; C-SAA
SwissProt:	P35542
ELISA Recommended dilution:	5000-10000
IHC positive control:	Human cervical cancer
IHC Recommend dilution:	25-100
WB Predicted band size:	15 kDa
WB Positive control:	Human normal stomach tissue lysate
WB Recommended dilution:	500-2000



mlbio 梅联生物
Good elisakit producers