

兔抗 PARP1(cleaved)多克隆抗体

中文名称：兔抗 PARP1(cleaved)多克隆抗体

英文名称：Anti-PARP1 rabbit polyclonal antibody

别名：PARP, PPOL, ADPRT, ARTD1, ADPRT1, PARP-1, ADPRT 1, pADPRT-1

相关类别：一抗

储存：冷冻（-20℃）

宿主：Rabbit

抗原：PARP1(cleaved)

反应种属：Human, Mouse, Rat

标记物：Unconjugate

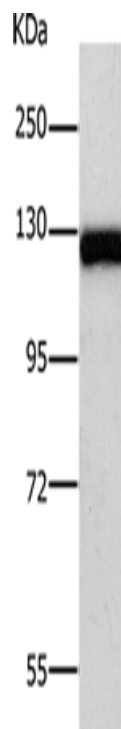
克隆类型：rabbit polyclonal

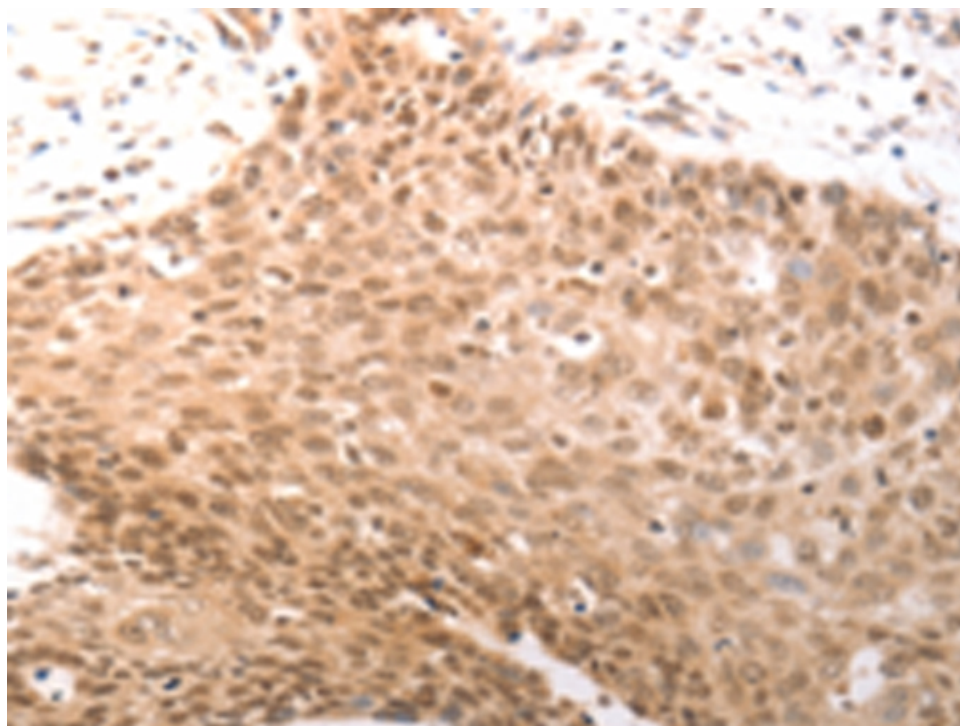
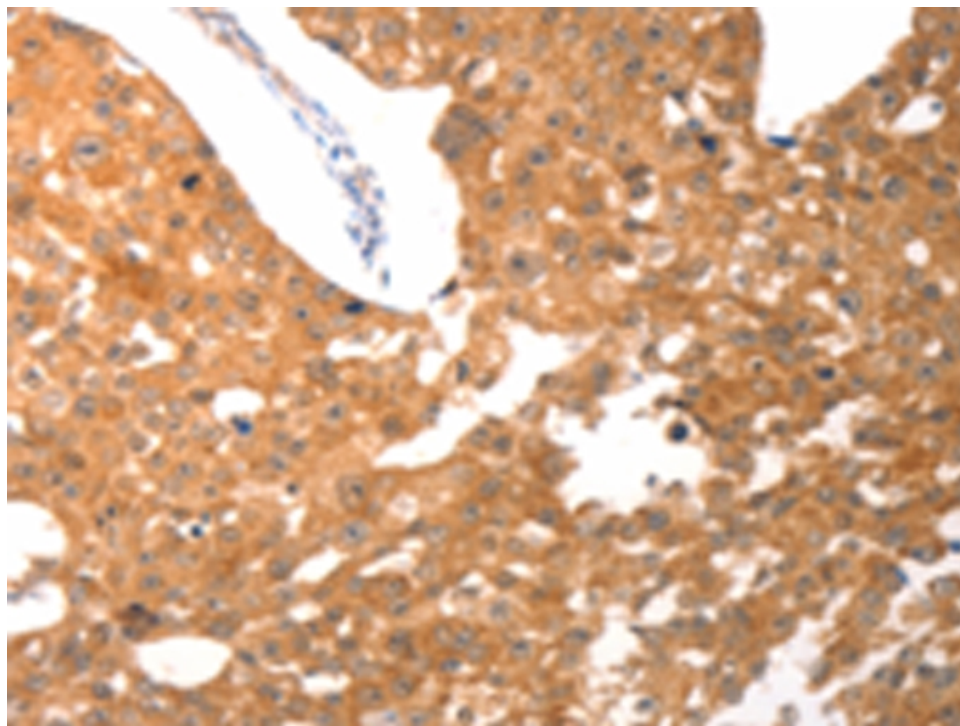
技术规格

Background:

This gene encodes a chromatin-associated enzyme, poly(ADP-ribosyl)transferase, which modifies various nuclear proteins by poly(ADP-ribosyl)ation. The modification is dependent on DNA and is involved in the regulation of various important cellular processes such as differentiation, proliferation, and tumor transformation and also in the regulation of the molecular events involved in the recovery of cell from DNA damage. In addition, this enzyme may be the site of mutation in Fanconi anemia, and may participate in the pathophysiology of type I diabetes.

Applications:	ELISA, WB, IHC
Name of antibody:	PARP1(cleaved)
Immunogen:	Synthetic peptide of human PARP1(cleaved)
Full name:	Poly (ADP-ribose) polymerase 1
Synonyms:	PARP, PPOL, ADPRT, ARTD1, ADPRT1, PARP-1, ADPRT 1, pADPRT-1
SwissProt:	P09874
ELISA Recommended dilution:	1000-5000
IHC positive control:	Human cervical cancer and human breast cancer
IHC Recommend dilution:	25-100
WB Predicted band size:	113 kDa
WB Positive control:	Human fetal brain tissue
WB Recommended dilution:	500-2000





mlbio 梅联生物
Good elisakit producers