

兔抗 PDCD1 多克隆抗体

中文名称：兔抗 PDCD1 多克隆抗体

英文名称：Anti-PDCD1 rabbit polyclonal antibody

别名：PD1, PD-1, CD279, SLEB2, hPD-1, hPD-I

相关类别：一抗

储存：冷冻（-20℃）

宿主：Rabbit

抗原：PDCD1

反应种属：Human

标记物：Unconjugate

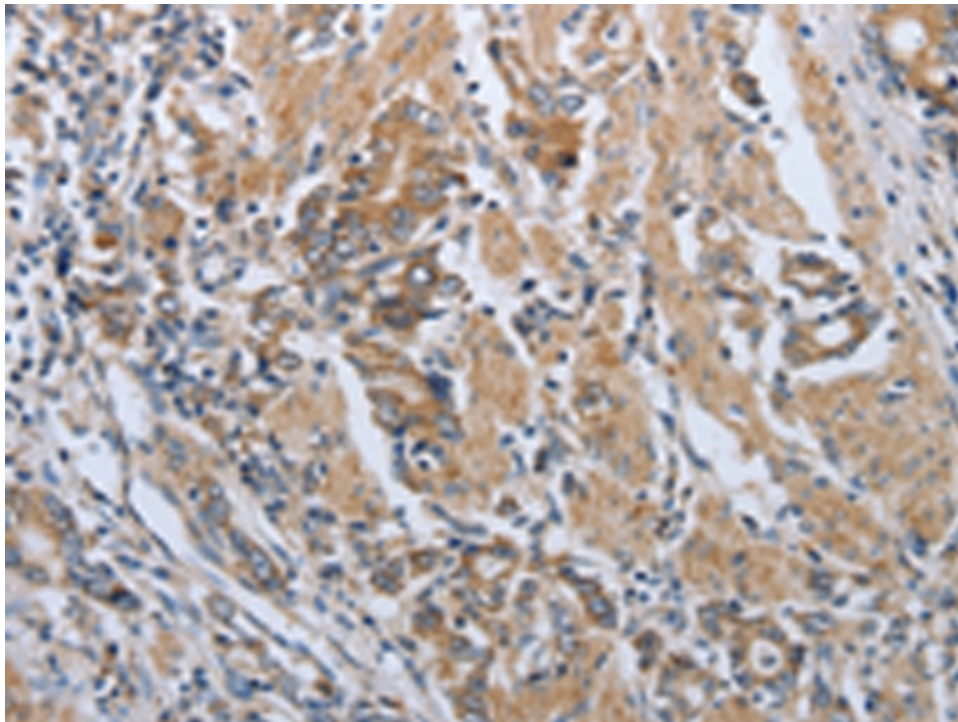
克隆类型：rabbit polyclonal

技术规格

Background:

This gene encodes a cell surface membrane protein of the immunoglobulin superfamily. This protein is expressed in pro-B-cells and is thought to play a role in their differentiation. In mice, expression of this gene is induced in the thymus when anti-CD3 antibodies are injected and large numbers of thymocytes undergo apoptosis. Mice deficient for this gene bred on a BALB/c background developed dilated cardiomyopathy and died from congestive heart failure. These studies suggest that this gene product may also be important in T cell function and contribute to the prevention of autoimmune diseases.

Applications:	ELISA, IHC
Name of antibody:	PDCD1
Immunogen:	Synthetic peptide of human PDCD1
Full name:	Programmed cell death 1
Synonyms:	PD1, PD-1, CD279, SLEB2, hPD-1, hPD-I
SwissProt:	Q15116
IHC positive control:	Human gastric cancer and human lung cancer
IHC Recommend dilution:	50-200



mlbio 梅联生物
Good elisakit producers