

兔抗 VPS35 多克隆抗体

中文名称: 兔抗 VPS35 多克隆抗体

英文名称: Anti-VPS35 rabbit polyclonal antibody

别名: MEM3; PARK17

抗原: VPS35

储存: 冷冻 (-20℃)

宿主: Rabbit

反应种属: Human, Mouse

相关类别: 一抗

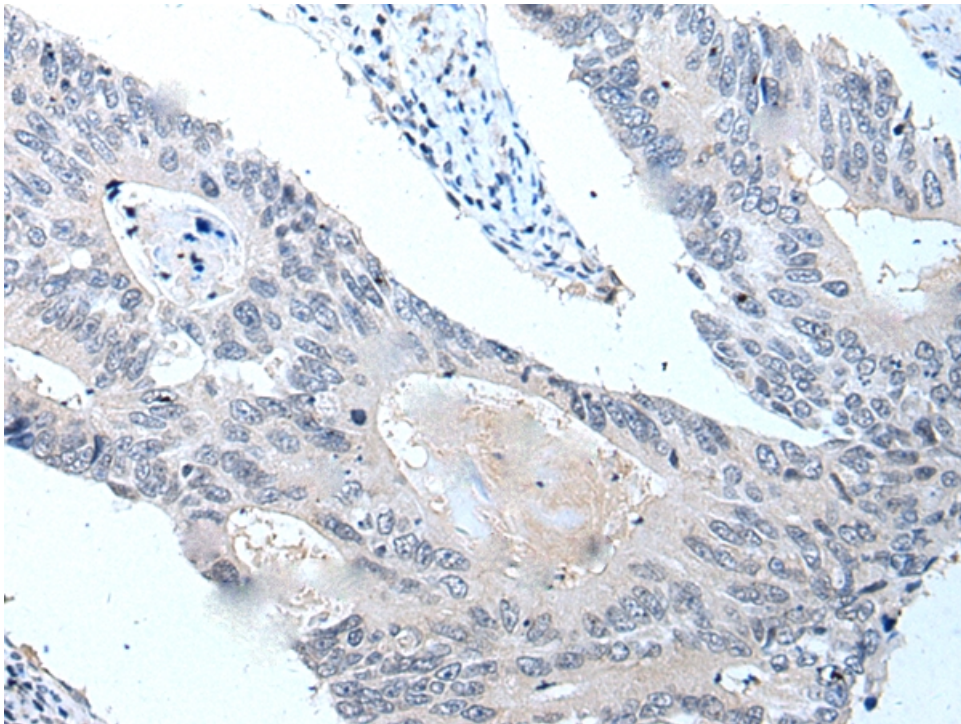
标记物: Unconjugate

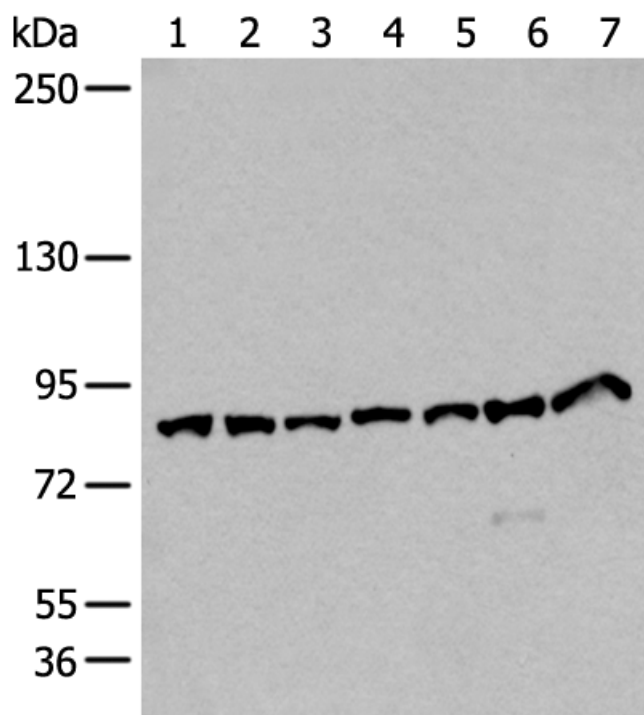
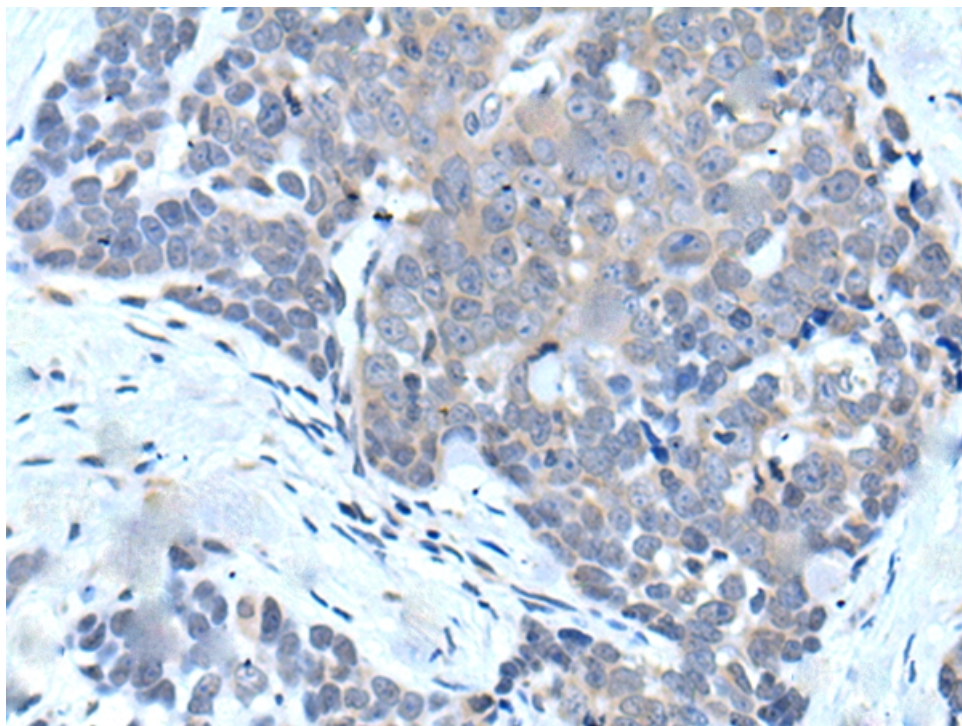
克隆类型: rabbit polyclonal

技术规格

Background:	This gene belongs to a group of vacuolar protein sorting (VPS) genes. The encoded protein is a component of a large multimeric complex, termed the retromer complex, involved in retrograde transport of proteins from endosomes to the trans-Golgi network. The close structural similarity between the yeast and human proteins that make up this complex suggests a similarity in function. Expression studies in yeast and mammalian cells indicate that this protein interacts directly with VPS35, which serves as the core of the retromer complex.
Applications:	ELISA, IHC

Name of antibody:	VPS35
Immunogen:	Fusion protein of human VPS35
Full name:	VPS35 retromer complex component
Synonyms:	MEM3; PARK17
SwissProt:	Q96QK1
ELISA Recommended dilution:	2000-10000
IHC positive control:	Human esophagus cancer
IHC Recommend dilution:	30-150





mlbio 梅联生物
Good elisakit producers