

兔抗 SHPK 多克隆抗体

中文名称：兔抗 SHPK 多克隆抗体

英文名称：Anti-SHPK rabbit polyclonal antibody

别名：sedoheptulokinase; SHK; CARKL

抗原：SHPK

相关类别：一抗

储存：冷冻（-20℃）

宿主：Rabbit

反应种属：Human, Mouse

标记物：Unconjugate

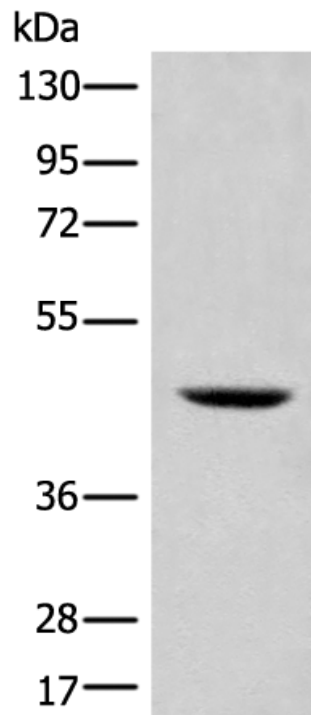
克隆类型：rabbit polyclonal

技术规格

Background:

The protein encoded by this gene has weak homology to several carbohydrate kinases, a class of proteins involved in the phosphorylation of sugars as they enter a cell, inhibiting return across the cell membrane. Sequence variation between this novel gene and known carbohydrate kinases suggests the possibility of a different substrate, cofactor or changes in kinetic properties distinguishing it from other carbohydrate kinases. The gene resides in a region commonly deleted in cystinosis patients, suggesting a role as a modifier for the cy

	stinosis phenotype. The genomic region is also rich in Alu repetitive sequences, frequently involved in chromosomal rearrangements.
Applications:	ELISA, WB, IHC
Name of antibody:	SHPK
Immunogen:	Fusion protein of human SHPK
Full name:	sedoheptulokinase
Synonyms:	SHK; CARKL
SwissProt:	Q9UHH6
ELISA Recommended dilution:	5000-10000
IHC positive control:	Human ovarian cancer;
IHC Recommend dilution:	40-200
WB Predicted band size:	51 kDa
WB Positive control:	293T cell lysate
WB Recommended dilution:	500-2000



mlbio 梅联生物
Good elisakit producers

