

## 兔抗 XKR6 多克隆抗体

中文名称：兔抗 XKR6 多克隆抗体

英文名称：Anti-XKR6 rabbit polyclonal antibody

别名：XRG6; C8orf5; C8orf7; C8orf21

相关类别：一抗

储存：冷冻（-20℃）

宿主：Rabbit

抗原：XKR6

反应种属：Human, Mouse, Rat

标记物：Unconjugate

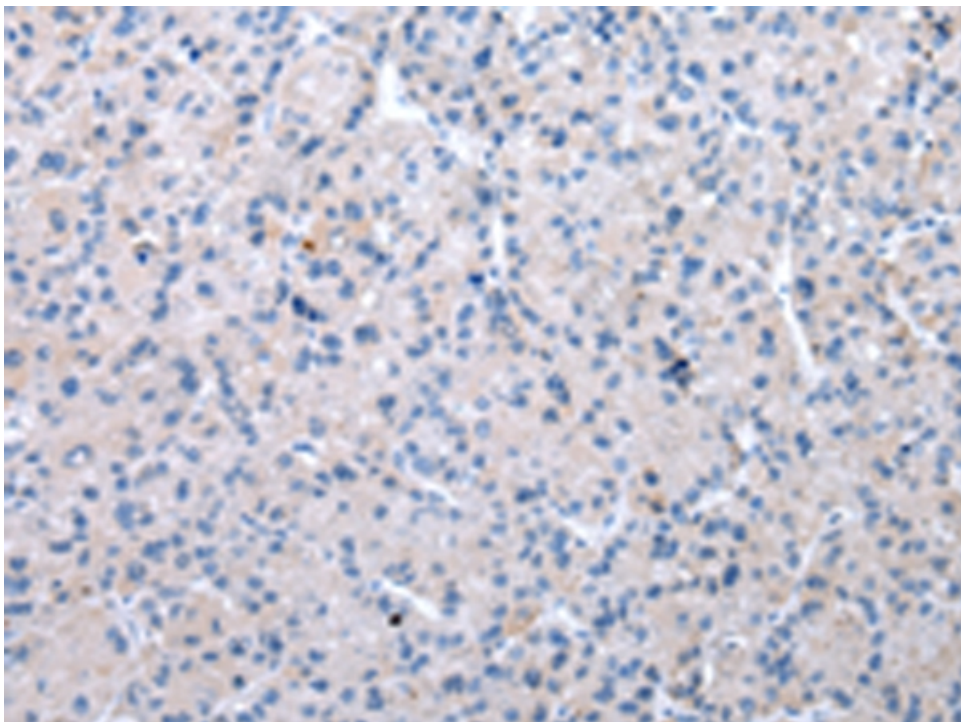
克隆类型：rabbit polyclonal

### 技术规格

#### Background:

XK is a 444 amino acid protein that spans the membrane 10 times and carries the ubiquitous antigen, Kx, which determines blood type. The XK (X-linked Kx blood group)-related gene family are homologs of XK. XKR6 (XK-related protein 6) is a 641 amino acid multi-pass membrane protein that likely is a component of the XK/Kell complex of the Kell blood group system. The gene encoding XKR6 maps to human chromosome 8, which is made up of nearly 146 million bases and encodes about 800 genes. There are two isoforms of XKR6 that are produced as a result of alternative spl

	icing events.
<b>Applications:</b>	ELISA, IHC
<b>Name of antibody:</b>	XKR6
<b>Immunogen:</b>	Fusion protein of human XKR6
<b>Full name:</b>	XK, Kell blood group complex subunit-related family, member 6
<b>Synonyms :</b>	XRG6; C8orf5; C8orf7; C8orf21
<b>SwissProt:</b>	Q5GH73
<b>ELISA Recommended dilution:</b>	2000-5000
<b>IHC positive control:</b>	Human liver cancer
<b>IHC Recommend dilution:</b>	25-100



**mlbio** 梅联生物  
Good elisakit producers