

兔抗 SIAH1 多克隆抗体

中文名称：兔抗 SIAH1 多克隆抗体

英文名称：Anti-SIAH1 rabbit polyclonal antibody

别名：siah E3 ubiquitin protein ligase 1; SIAH1A

相关类别：一抗

储存：冷冻（-20℃）

宿主：Rabbit

抗原：SIAH1

反应种属：Human, Mouse, Rat

标记物：Unconjugate

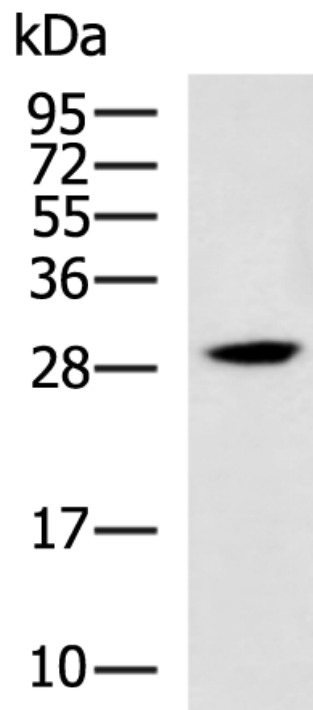
克隆类型：rabbit polyclonal

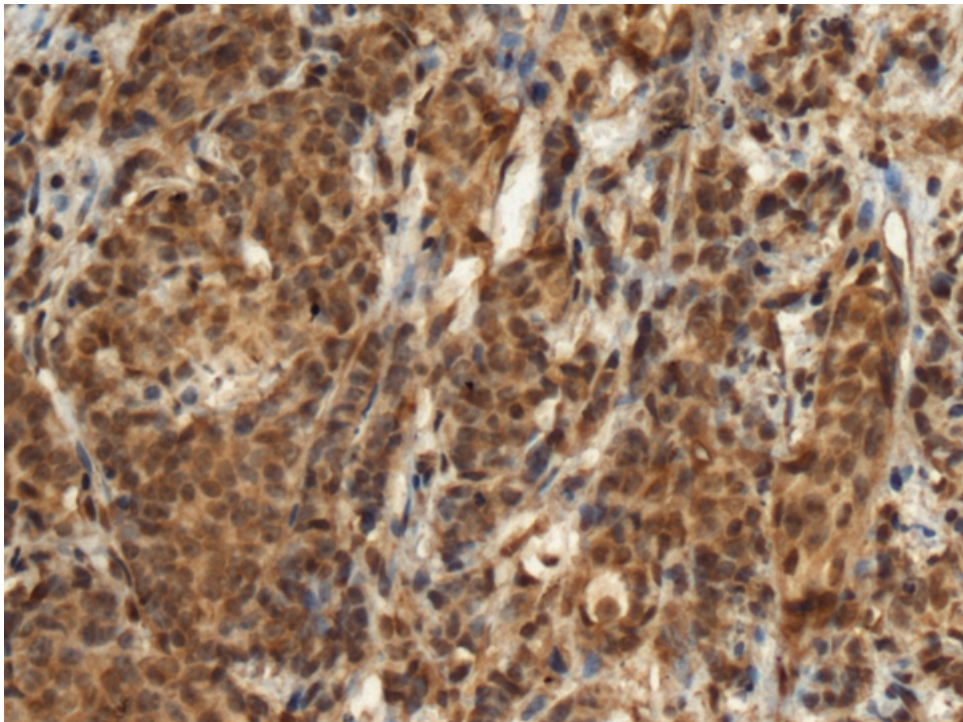
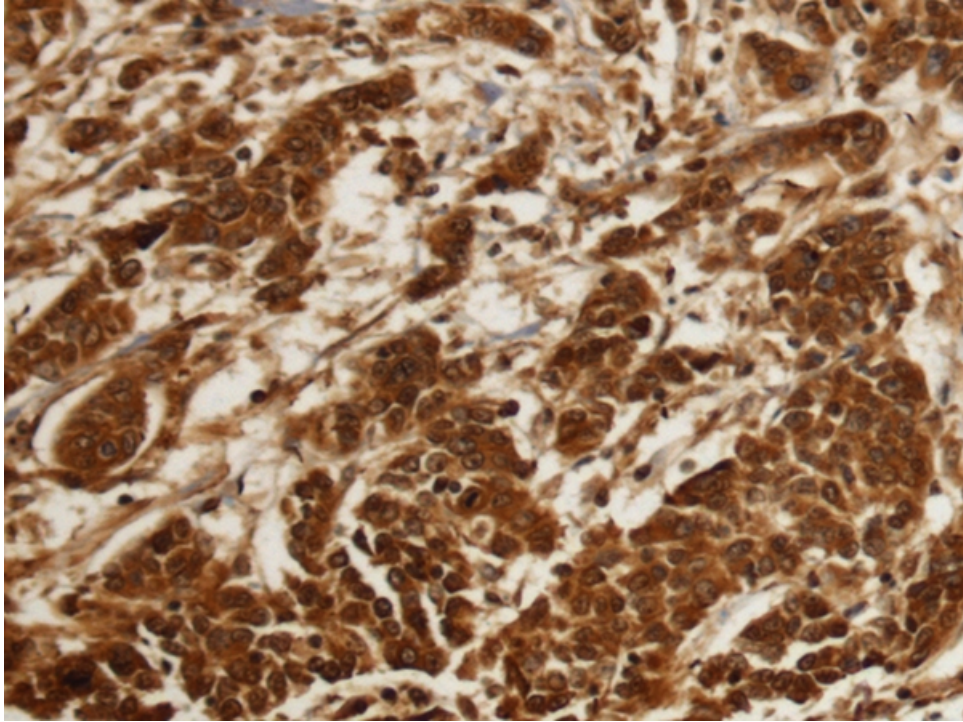
技术规格

Background:

This gene encodes a protein that is a member of the seven in absentia homolog (SIAH) family. The protein is an E3 ligase and is involved in ubiquitination and proteasome-mediated degradation of specific proteins. The activity of this ubiquitin ligase has been implicated in the development of certain forms of Parkinson's disease, the regulation of the cellular response to hypoxia and induction of apoptosis. Alternative splicing results in several additional transcript variants, some encoding different isoforms and others that have not been fully characterized. [provided by RefSeq, Jul 2008]

Applications:	ELISA, WB, IHC
Name of antibody:	SIAH1
Immunogen:	Fusion protein of human SIAH1
Full name:	siah E3 ubiquitin protein ligase 1
Synonyms:	SIAH1A
SwissProt:	Q8IUQ4
ELISA Recommended dilution:	5000-10000
IHC positive control:	Human colorectal cancer and Human prostate cancer
IHC Recommend dilution:	250-500
WB Predicted band size:	31 kDa
WB Positive control:	Mouse kidney tissue lysate
WB Recommended dilution:	500-2000





mlbio 梅联生物
Good elisakit producers