

兔抗 PLEKHF2 多克隆抗体

中文名称：兔抗 PLEKHF2 多克隆抗体

英文名称： Anti-PLEKHF2 rabbit polyclonal antibody

别名： pleckstrin homology and FYVE domain containing 2; EAPF; PHAFIN2; ZFYVE18

相关类别： 一抗

储存： 冷冻（-20℃）

宿主： Rabbit

抗原： PLEKHF2

反应种属： Human, Mouse

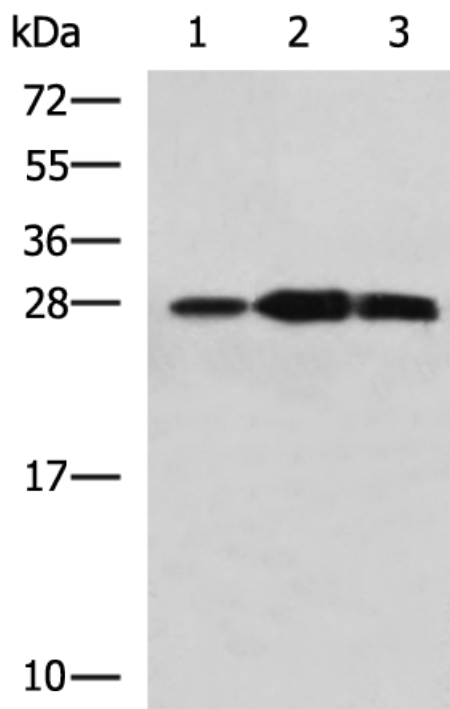
标记物： Unconjugate

克隆类型： rabbit polyclonal

技术规格

Background:	May play a role in early endosome fusion upstream of RAB5, hence regulating receptor trafficking and fluid-phase transport. Enhances cellular sensitivity to TNF-induced apoptosis (PubMed:18288467).
Applications:	ELISA, WB, IHC
Name of antibody:	PLEKHF2
Immunogen:	Fusion protein of human PLEKHF2
Full name:	pleckstrin homology and FYVE domain containing 2
Synonyms:	EAPF; PHAFIN2; ZFYVE18
SwissProt:	Q9H8W4
ELISA Recommended dilution:	5000-10000

IHC positive control:	Human tonsil
IHC Recommend dilution:	100-300
WB Predicted band size:	28 kDa
WB Positive control:	Mouse kidney tissue, Raji and Jurkat cell lysates
WB Recommended dilution:	1000-5000



mlbio 梅联生物
Good elisakit producers

