

兔抗 SLC6A1 多克隆抗体

中文名称：兔抗 SLC6A1 多克隆抗体

英文名称：Anti-SLC6A1 rabbit polyclonal antibody

别名：GAT1; GABATR; GABATHG

相关类别：一抗

储存：冷冻（-20℃）

宿主：Rabbit

抗原：SLC6A1

反应种属：Human, Mouse, Rat

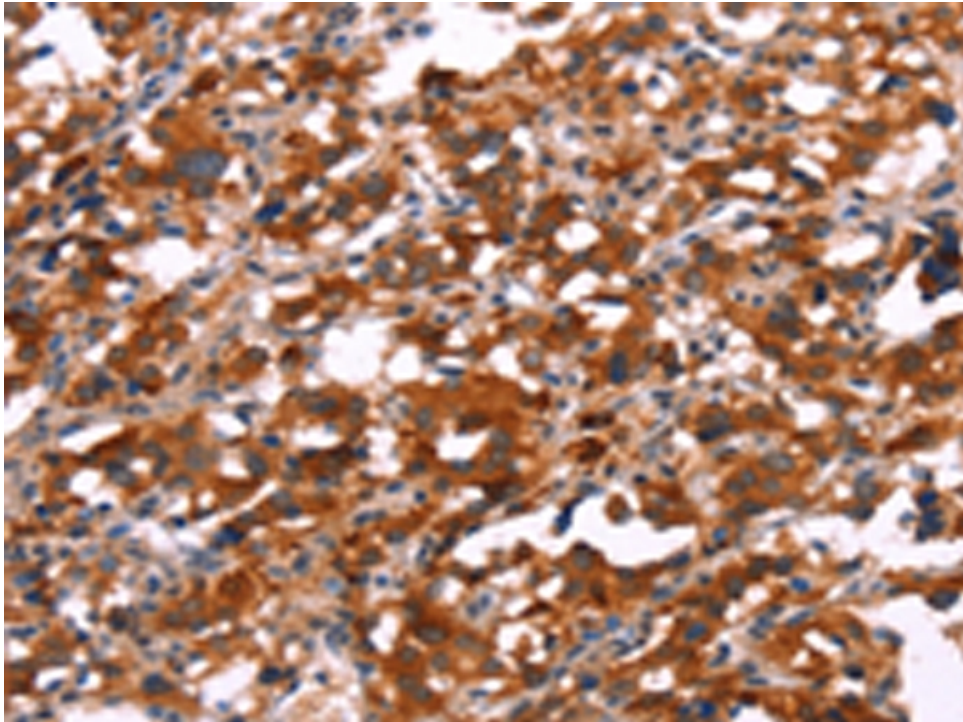
标记物：Unconjugate

克隆类型：rabbit polyclonal

技术规格

Background:	The SLC6A1 gene encodes a gamma-aminobutyric acid (GABA) transporter, which removes GABA from the synaptic cleft. The cDNA contained an open reading frame encoding a hydrophobic protein of 599 amino acids with a calculated molecular weight of 67,022 daltons. Hydropathy analysis showed 12 potential transmembrane segments. The human protein is highly homologous to that from rat brain
Applications:	ELISA, IHC
Name of antibody:	SLC6A1
Immunogen:	Synthetic peptide of human SLC6A1

Full name:	solute carrier family 6 (neurotransmitter transporter), member 1
Synonyms :	GAT1; GABATR; GABATHG
SwissProt:	P30531
ELISA Recommended dilution:	1000-2000
IHC positive control:	Human thyroid cancer and Human gastric cancer
IHC Recommend dilution:	25-100



mlbio 梅联生物
Good elisakit producers