

## 兔抗 SLC7A9 多克隆抗体

中文名称：兔抗 SLC7A9 多克隆抗体

英文名称：Anti-SLC7A9 rabbit polyclonal antibody

别名：BAT1; CSNU3

相关类别：一抗

储存：冷冻（-20℃）

宿主：Rabbit

抗原：SLC7A9

反应种属：Human

标记物：Unconjugate

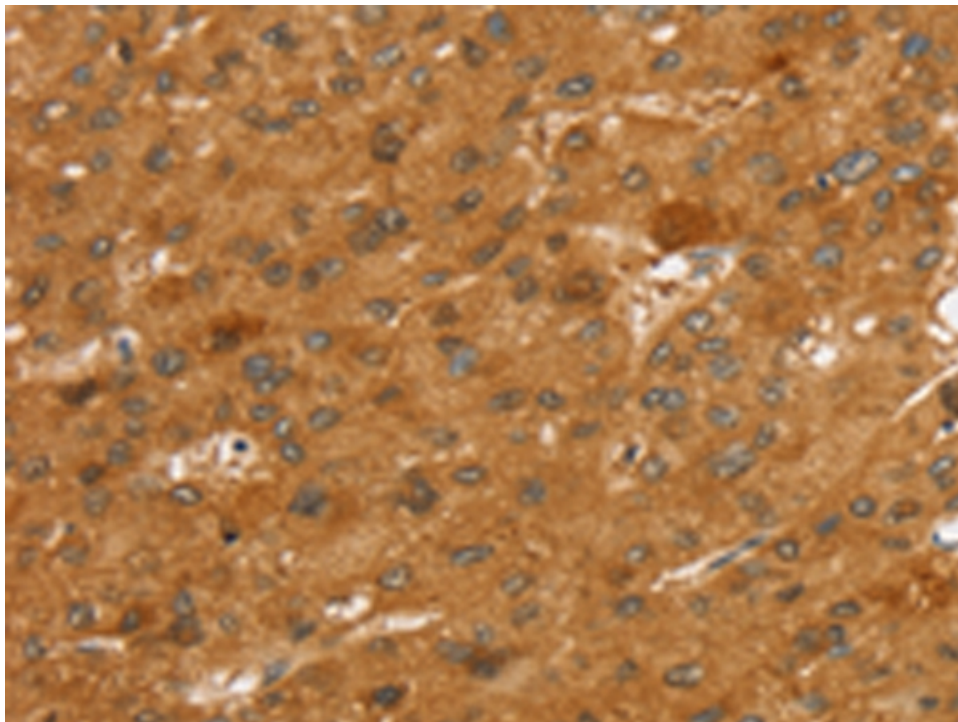
克隆类型：rabbit polyclonal

### 技术规格

#### Background:

This gene encodes a protein that belongs to a family of light subunits of amino acid transporters. This protein plays a role in the high-affinity and sodium-independent transport of cystine and neutral and dibasic amino acids, and appears to function in the reabsorption of cystine in the kidney tubule. Mutations in this gene cause non-type I cystinuria, a disease that leads to cystine stones in the urinary system due to impaired transport of cystine and dibasic amino acids. Alternate transcript

	variants, which encode the same protein, have been found for this gene.
<b>Applications:</b>	ELISA, IHC
<b>Name of antibody:</b>	SLC7A9
<b>Immunogen:</b>	Synthetic peptide of human SLC7A9
<b>Full name:</b>	solute carrier family 7 (amino acid transporter light chain, bo,+ system), member 9
<b>Synonyms :</b>	BAT1; CSNU3
<b>SwissProt:</b>	P82251
<b>ELISA Recommended dilution:</b>	2000-5000
<b>IHC positive control:</b>	Human liver cancer and Human thyroid cancer
<b>IHC Recommend dilution:</b>	25-100



**mlbio** 梅联生物  
Good elisakit producers