

兔抗 KLF12 多克隆抗体

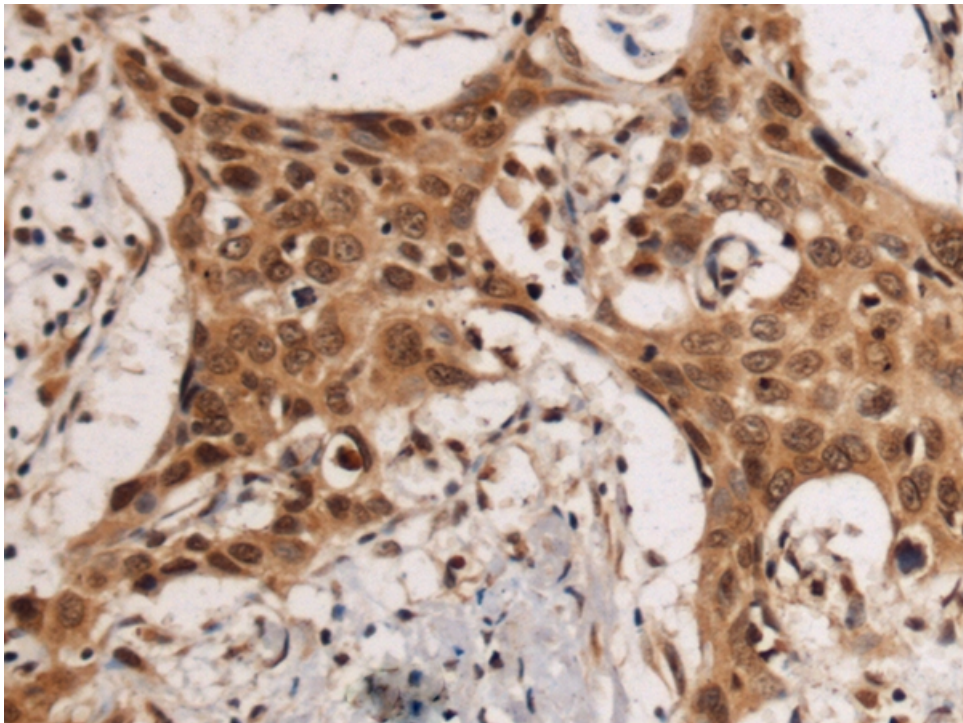
- 中文名称： 兔抗 KLF12 多克隆抗体
- 英文名称： Anti-KLF12 rabbit polyclonal antibody
- 别名： Kruppel like factor 12; AP2REP; AP-2rep; HSPC122
- 相关类别： 一抗
- 储存： 冷冻（-20℃）
- 宿主： Rabbit
- 抗原： KLF12
- 反应种属： Human, Mouse
- 标记物： Unconjugate
- 克隆类型： rabbit polyclonal

技术规格

Background:

Activator protein-2 alpha (AP-2 alpha) is a developmentally-regulated transcription factor and important regulator of gene expression during vertebrate development and carcinogenesis. The protein encoded by this gene is a member of the Kruppel-like zinc finger protein family and can repress expression of the AP-2 alpha gene by binding to a specific site in the AP-2 alpha gene promoter. Repression by the encoded protein requires binding with a corepressor, CtBP1. Two transcript variants encoding different isoforms have been found for this gene. [provided by RefSeq, Jul 2008]

Applications:	ELISA, IHC
Name of antibody:	KLF12
Immunogen:	Fusion protein of human KLF12
Full name:	Kruppel like factor 12
Synonyms:	AP2REP; AP-2rep; HSPC122
SwissProt:	Q9Y4X4
ELISA Recommended dilution:	5000-10000
IHC positive control:	Human esophagus cancer
IHC Recommend dilution:	50-200



mlbio 梅联生物
Good elisakit producers