

兔抗 PPM1A 多克隆抗体

中文名称：兔抗 PPM1A 多克隆抗体

英文名称：Anti-PPM1A rabbit polyclonal antibody

别名：protein phosphatase, Mg²⁺/Mn²⁺ dependent 1A; PP2CA; PP2Calpha; PP2C-ALPHA

相关类别：一抗

储存：冷冻（-20℃）

宿主：Rabbit

抗原：PPM1A

反应种属：Human, Mouse, Rat

标记物：Unconjugate

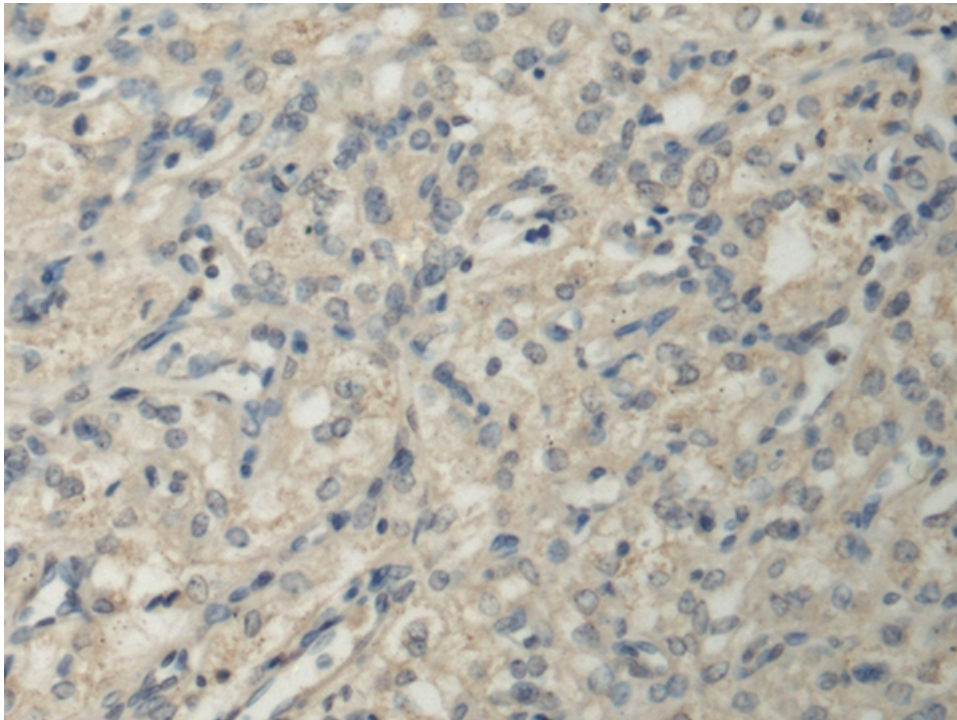
克隆类型：rabbit polyclonal

技术规格

Background:

The protein encoded by this gene is a member of the PP2C family of Ser/Thr protein phosphatases. PP2C family members are known to be negative regulators of cell stress response pathways. This phosphatase dephosphorylates, and negatively regulates the activities of, MAP kinases and MAP kinase kinases. It has been shown to inhibit the activation of p38 and JNK kinase cascades induced by environmental stresses. This phosphatase can also dephosphorylate cyclin-dependent kinases, and thus may be involved in cell cycle control. Overexpression of this phosphatase is

	reported to activate the expression of the tumor suppressor gene TP53/p53, which leads to G2/M cell cycle arrest and apoptosis. Three alternatively spliced transcript variants encoding distinct isoforms have been described. [provided by RefSeq, Jul 2008]
Applications:	ELISA, IHC
Name of antibody:	PPM1A
Immunogen:	Fusion protein of human PPM1A
Full name:	protein phosphatase, Mg ²⁺ /Mn ²⁺ dependent 1A
Synonyms:	PP2CA; PP2Calpha; PP2C-ALPHA
SwissProt:	P35813
ELISA Recommended dilution:	5000-10000
IHC positive control:	Human brain
IHC Recommend dilution:	100-200



mlbio 酶联生物
Good elisakit producers