

## 兔抗 SLPI 多克隆抗体

中文名称：兔抗 SLPI 多克隆抗体

英文名称：Anti-SLPI rabbit polyclonal antibody

别名：ALP; MPI; ALK1; BLPI; HUSI; WAP4; WFDC4; HUSI-I

储存：冷冻（-20℃）

抗原：SLPI

宿主：Rabbit

相关类别：一抗

反应种属：Human

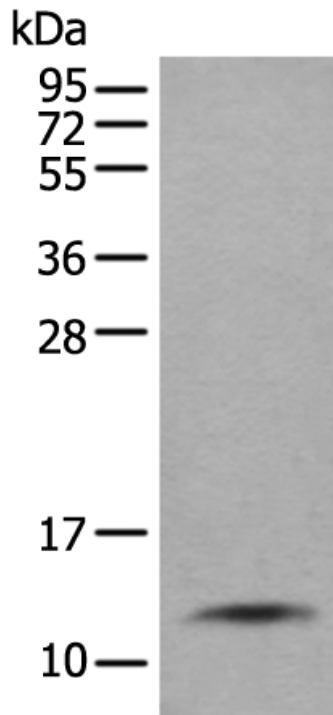
标记物：Unconjugate

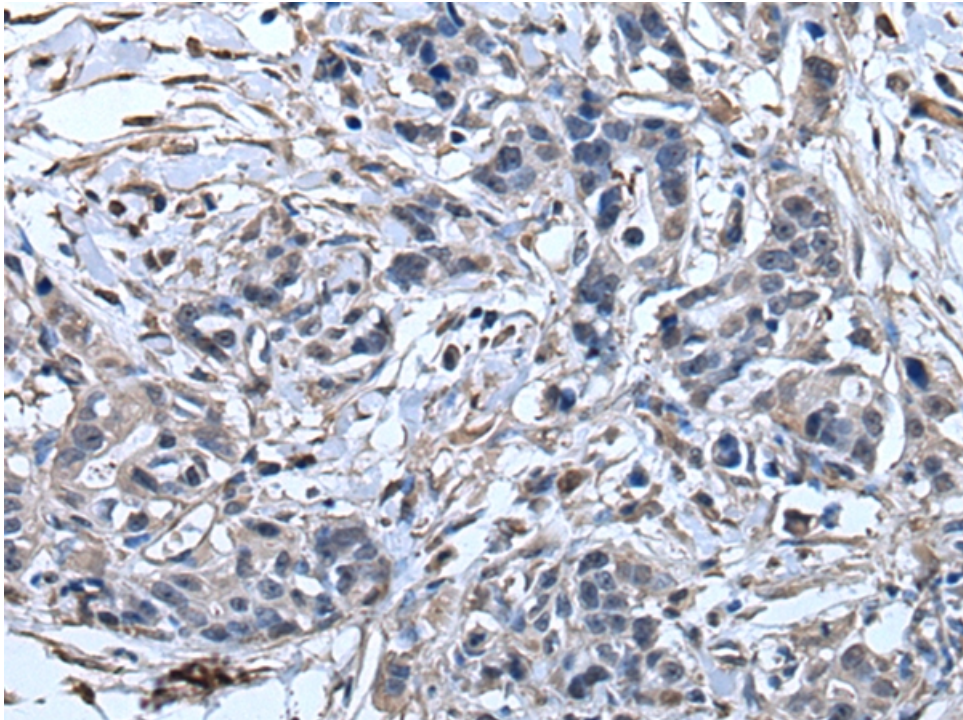
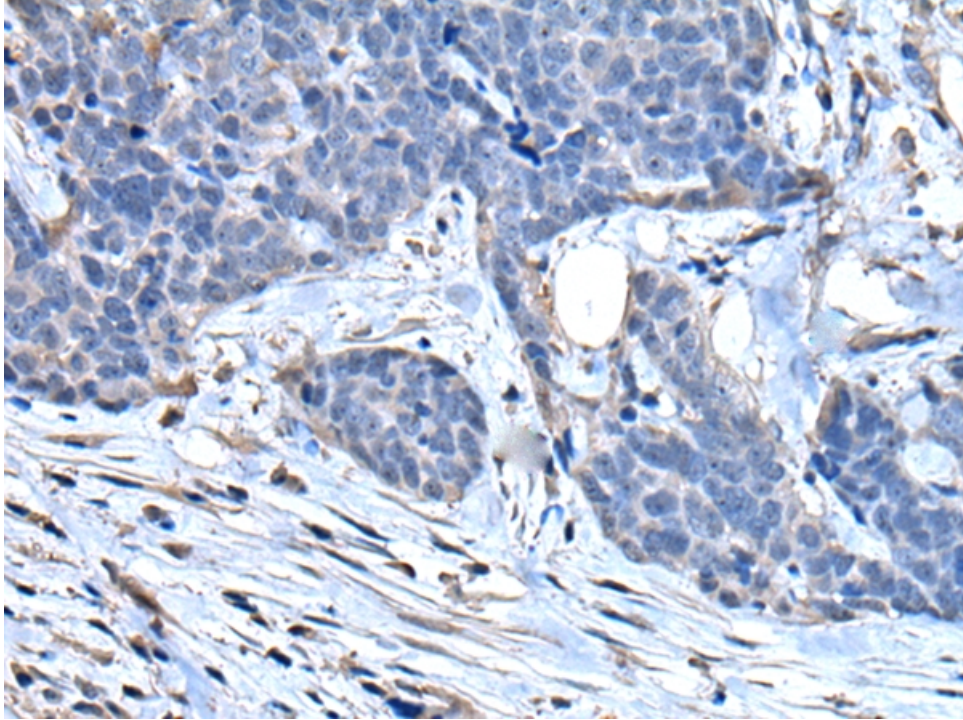
克隆类型：rabbit polyclonal

### 技术规格

<b>Background:</b>	This gene encodes a secreted inhibitor which protects epithelial tissues from serine proteases. It is found in various secretions including seminal plasma, cervical mucus, and bronchial secretions, and has affinity for trypsin, leukocyte elastase, and cathepsin G. Its inhibitory effect contributes to the immune response by protecting epithelial surfaces from attack by endogenous proteolytic enzymes. This antimicrobial protein has antibacterial, antifungal and antiviral activity.
<b>Applications:</b>	ELISA, WB, IHC
<b>Name of antibody:</b>	SLPI

<b>Immunogen:</b>	Fusion protein of human SLPI
<b>Full name:</b>	secretory leukocyte peptidase inhibitor
<b>Synonyms:</b>	ALP; MPI; ALK1; BLPI; HUSI; WAP4; WFDC4; HUSI-I
<b>SwissProt:</b>	P03973
<b>ELISA Recommended dilution:</b>	5000-10000
<b>IHC positive control:</b>	Human gastric cancer and human thyroid cancer
<b>IHC Recommend dilution:</b>	30-150
<b>WB Predicted band size:</b>	14 kDa
<b>WB Positive control:</b>	Human lung tissue lysate
<b>WB Recommended dilution:</b>	200-1000





**mlbio** 梅联生物  
Good elisakit producers