

兔抗 PRKCQ 多克隆抗体

- 中文名称：兔抗 PRKCQ 多克隆抗体
- 英文名称：Anti-PRKCQ (Ab-676) rabbit polyclonal antibody
- 别名：PRKCT; nPKC-theta
- 相关类别：一抗
- 储存：冷冻（-20℃）避光
- 宿主：Rabbit
- 抗原：PRKCQ
- 反应种属：Human
- 标记物：Unconjugate
- 克隆类型：rabbit polyclonal

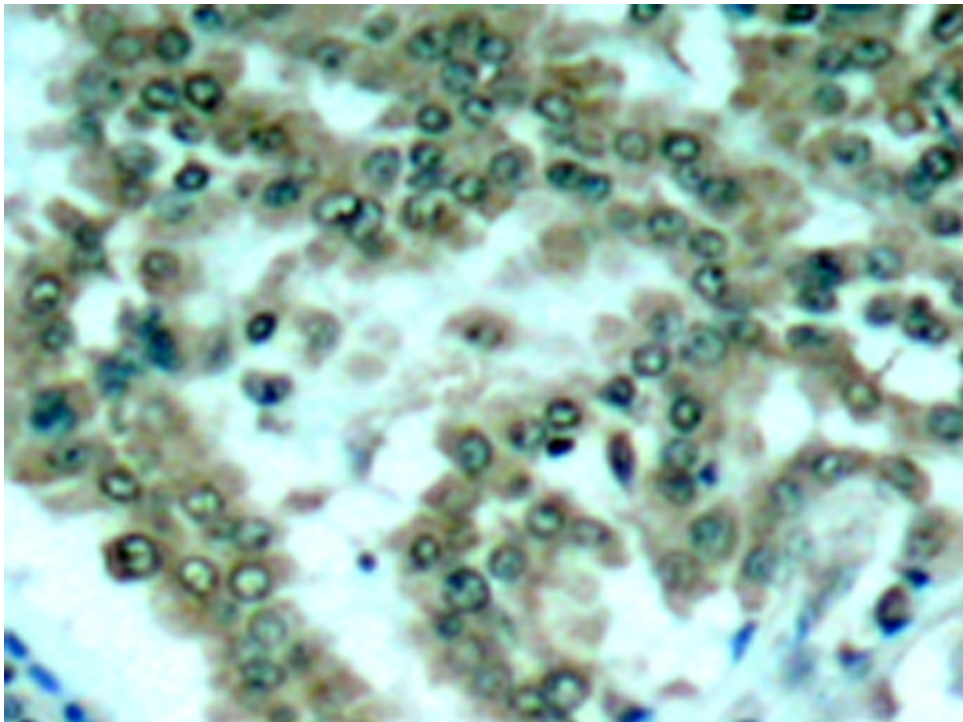
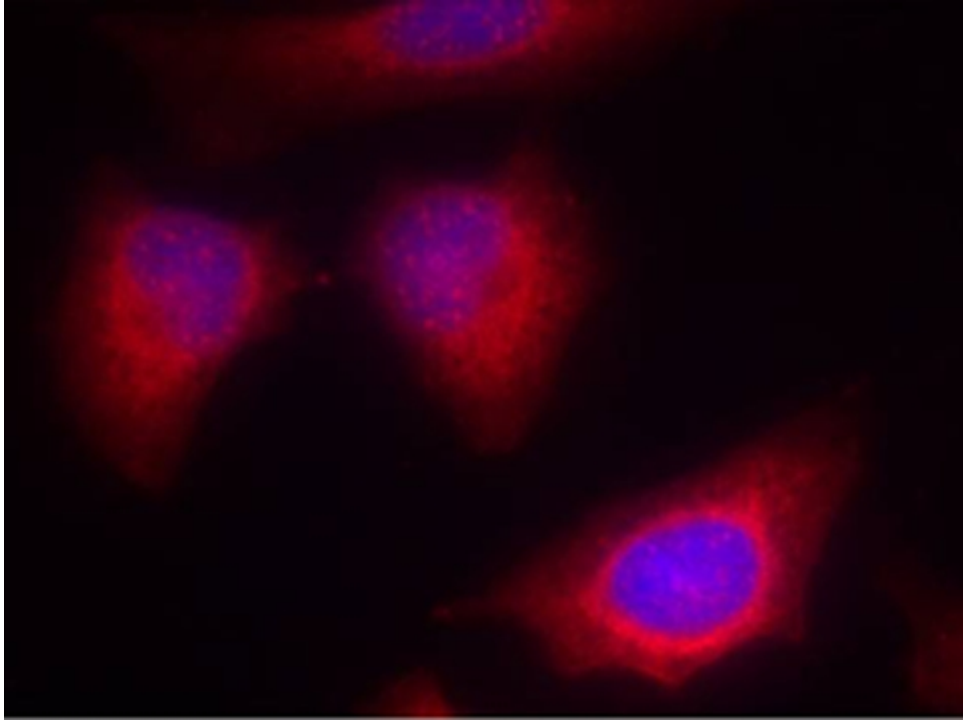
技术规格

Background:

This is a calcium-independent, phospholipid-dependent, serine- and threonine-specific enzyme. Essential for T-cell receptor (TCR)-mediated T-cell activation, but is dispensable during TCR-dependent thymocyte development. Links the TCR signaling complex to the activation of NF-kappa-B in mature T lymphocytes. Required for interleukin-2 (IL2) production. PKC is activated by diacylglycerol, which in turn phosphorylates a range of cellular proteins. PKC also serves as the receptor for phorbol esters, a class of tumor promoters.

Applications:	WB, IHC, IF
Name of antibody:	PRKCQ
Immunogen:	Synthetic peptide of human PRKCQ (Ab-676)
Full name:	protein kinase C, theta
Synonyms :	PRKCT; nPKC-theta
SwissProt:	Q04759
IHC positive control:	Human lung carcinoma
IHC Recommend dilution:	50-100
WB Predicted band size:	82 kDa
WB Positive control:	PC12 cells
WB Recommended dilution:	500-1000
IF Positive control:	Hela cells
IF Recommended dilution	100-200





mlbio 酶联生物
Good elisakit producers