

兔抗 PSMB7 多克隆抗体

中文名称：兔抗 PSMB7 多克隆抗体

英文名称： Anti-PSMB7 rabbit polyclonal antibody

别名： Z

相关类别： 一抗

储存： 冷冻（-20℃）

抗原： PSMB7

宿主： Rabbit

反应种属： Human, Mouse, Rat

标记物： Unconjugate

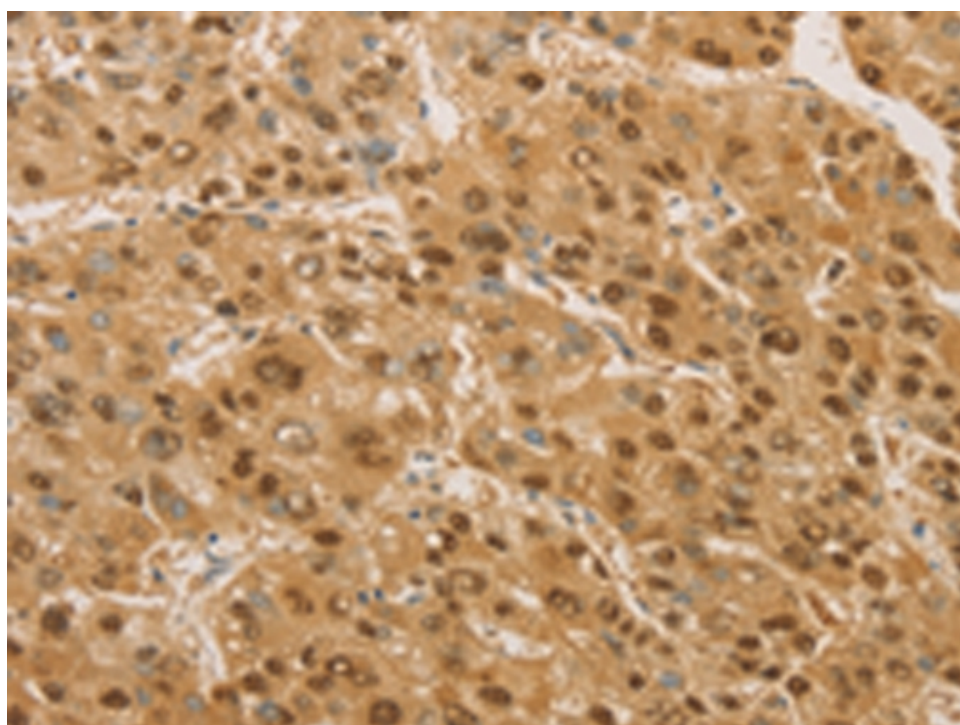
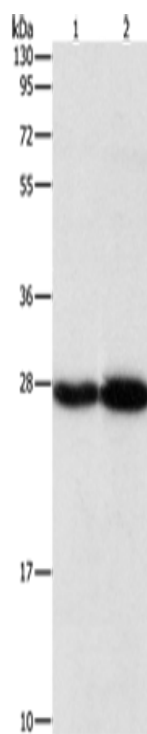
克隆类型： rabbit polyclonal

技术规格

Background:

The proteasome is a multicatalytic proteinase complex with a highly ordered ring-shaped 20S core structure. The core structure is composed of 4 rings of 28 non-identical subunits; 2 rings are composed of 7 alpha subunits and 2 rings are composed of 7 beta subunits. Proteasomes are distributed throughout eukaryotic cells at a high concentration and cleave peptides in an ATP/ubiquitin-dependent process in a non-lysosomal pathway. The encoded protein is a member of the proteasome B-type family, also known as the T1B family, and is a 20S core beta sub

| | |
|------------------------------------|--|
| | unit in the proteasome. Expression of this catalytic subunit is downregulated by gamma interferon, and proteolytic processing is required to generate a mature subunit. A pseudogene of this gene is located on the long arm of chromosome 14. |
| Applications: | ELISA, WB, IHC |
| Name of antibody: | PSMB7 |
| Immunogen: | Fusion protein of human PSMB7 |
| Full name: | proteasome (prosome, macropain) subunit, beta type, 7 |
| Synonyms : | Z |
| SwissProt: | Q99436 |
| ELISA Recommended dilution: | 2000-5000 |
| IHC positive control: | Human liver cancer and human colon cancer |
| IHC Recommend dilution: | 25-100 |
| WB Predicted band size: | 30 kDa |
| WB Positive control: | Human testis and mouse brain tissue |
| WB Recommended dilution: | 500-2000 |



mlbio 酶联生物
Good elisakit producers