

## 兔抗 PSMC2 多克隆抗体

中文名称：兔抗 PSMC2 多克隆抗体

英文名称： Anti-PSMC2 rabbit polyclonal antibody

别名： S7; MSS1; Nbla10058

相关类别： 一抗

储存： 冷冻（-20℃）

宿主： Rabbit

抗原： PSMC2

反应种属： Human, Mouse, Rat

标记物： Unconjugate

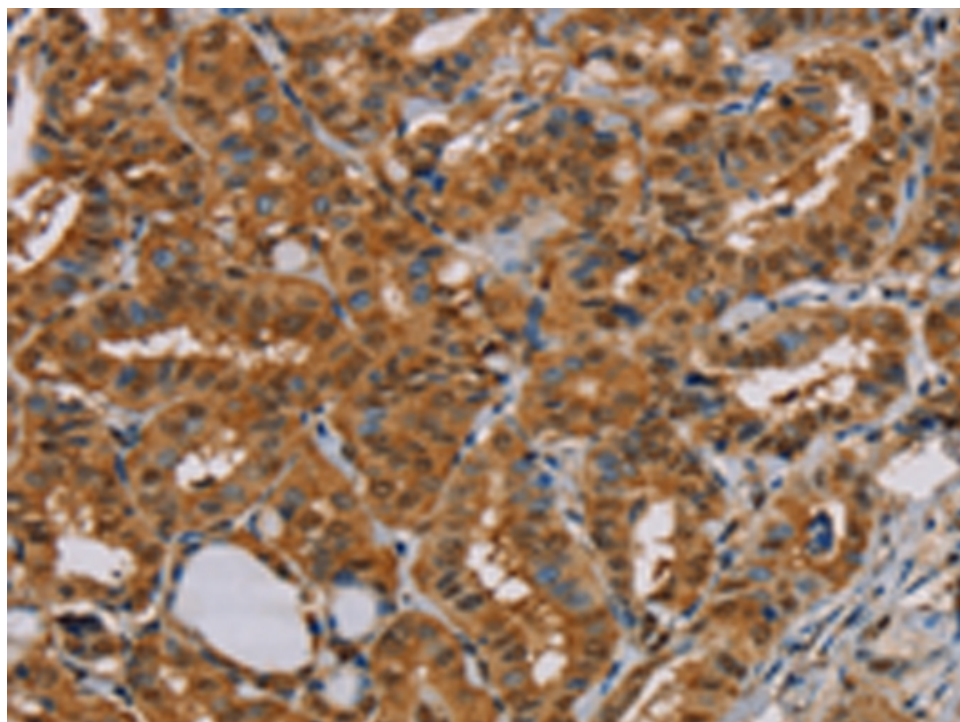
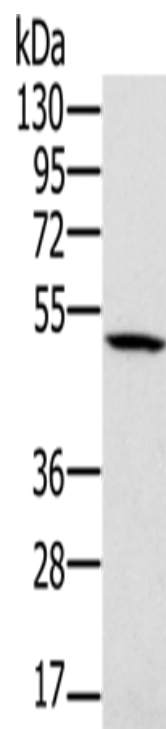
克隆类型： rabbit polyclonal

### 技术规格

**Background:**

The 26S proteasome is a multicatalytic proteinase complex with a highly ordered structure composed of 2 complexes, a 20S core and a 19S regulator. The 20S core is composed of 4 rings of 28 non-identical subunits; 2 rings are composed of 7 alpha subunits and 2 rings are composed of 7 beta subunits. The 19S regulator is composed of a base, which contains 6 ATPase subunits and 2 non-ATPase subunits, and a lid, which contains up to 10 non-ATPase subunits. Proteasomes are distributed throughout eukaryotic cells at a high concentration and cl

	<p>leave peptides in an ATP/ubiquitin-dependent process in a non-lysosomal pathway. An essential function of a modified proteasome, the immunoproteasome, is the processing of class I MHC peptides. This gene encodes one of the ATPase subunits, a member of the triple-A family of ATPases which have a chaperone-like activity.</p>
<b>Applications:</b>	ELISA, WB, IHC
<b>Name of antibody:</b>	PSMC2
<b>Immunogen:</b>	Fusion protein of human PSMC2
<b>Full name:</b>	proteasome (prosome, macropain) 26S subunit, ATPase, 2
<b>Synonyms :</b>	S7; MSS1; Nbla10058
<b>SwissProt:</b>	P35998
<b>ELISA Recommended dilution:</b>	2000-5000
<b>IHC positive control:</b>	Human thyroid cancer and human breast cancer
<b>IHC Recommend dilution:</b>	50-200
<b>WB Predicted band size:</b>	49 kDa
<b>WB Positive control:</b>	231 cells
<b>WB Recommended dilution:</b>	500-2000



**mlbio** 酶联生物  
Good elisakit producers