

兔抗 LATS1/2 多克隆抗体

中文名称：兔抗 LATS1/2 多克隆抗体

英文名称：Anti-LATS1/2 rabbit polyclonal antibody

别名：wts; WARTS/KPM

相关类别：一抗

储存：冷冻（-20℃）避光

宿主：Rabbit

抗原：LATS1/2

反应种属：Human

标记物：Unconjugate

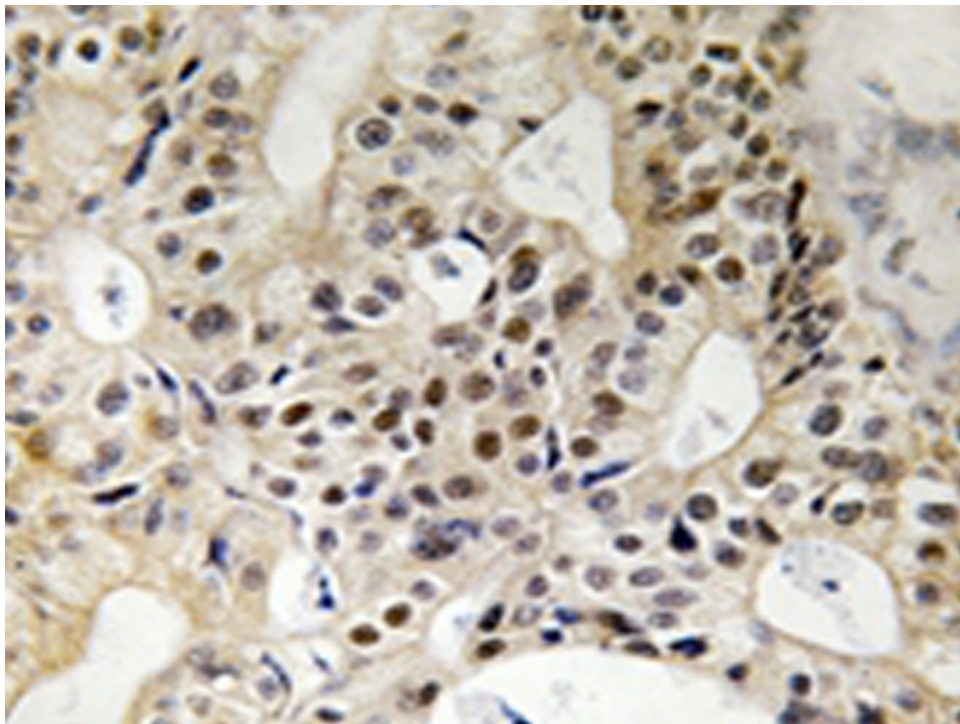
克隆类型：rabbit polyclonal

技术规格

Background:

Negative regulator of YAP1 in the Hippo signaling pathway that plays a pivotal role in organ size control and tumor suppression by restricting proliferation and promoting apoptosis. The core of this pathway is composed of a kinase cascade wherein STK3/MST2 and STK4/MST1, in complex with its regulatory protein SAV1, phosphorylates and activates LATS1/2 in complex with its regulatory protein MOB1, which in turn phosphorylates and inactivates YAP1 oncoprotein and WWTR1/TAZ. Phosphorylation of YAP1 by LATS1 inhibits its translocation into the nucleus to regulate cellular genes important for cell proliferation, cell death, and cell migration. Acts as a tumor su

	ppressor which plays a critical role in maintenance of ploidy through its actions in both mitotic progression and the G1 to traploidy checkpoint. Negatively regulates G2/M transition by down-regulating CDK1 kinase activity. Involved in the control of p53 expression. Affects cytokinesis by regulating actin polymerization through negative modulation of LIMK1. May also play a role in endocrine function.
Applications:	IHC
Name of antibody:	LATS1/2
Immunogen:	Synthesized peptide derived from Internal of human LATS1/2.
Full name:	large tumor suppressor kinase 1/2
Synonyms :	wt5; WARTS/KPM
SwissProt:	O95835/Q9NRM7
IHC positive control:	Human breast carcinoma tissue
IHC Recommend dilution:	50-100



mlbio 梅联生物
Good elisakit producers