

## 兔抗 LCN2 多克隆抗体

中文名称：兔抗 LCN2 多克隆抗体

英文名称：Anti-LCN2 rabbit polyclonal antibody

别名：24p3, MSFI, NGAL

相关类别：一抗

储存：冷冻（-20℃）

宿主：Rabbit

抗原：LCN2

反应种属：Human

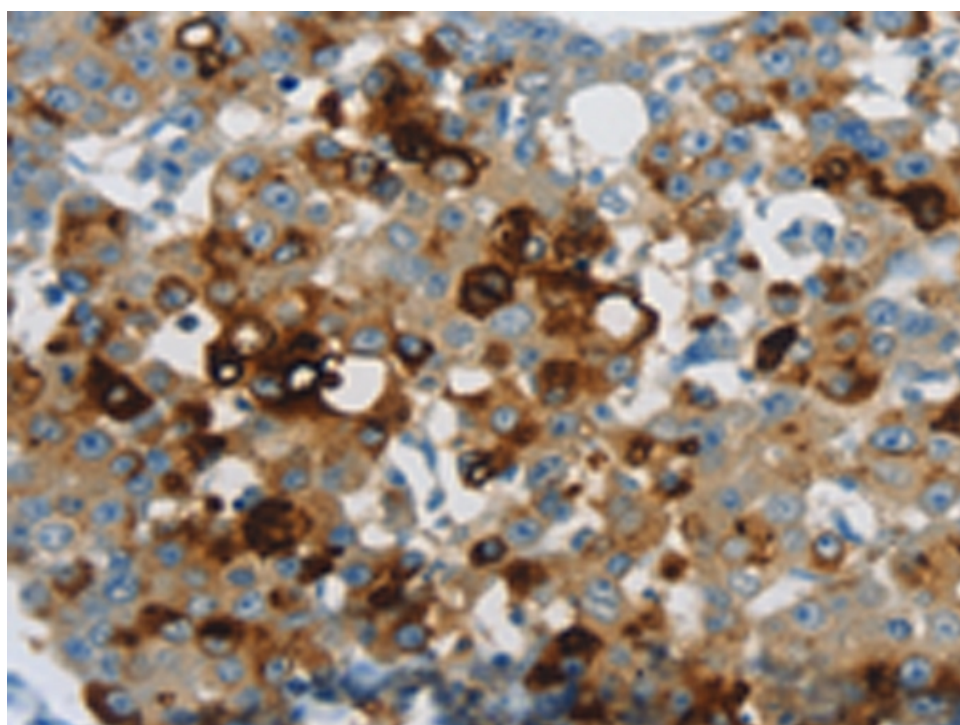
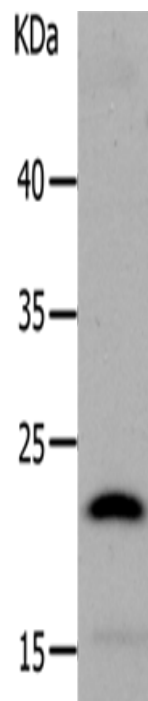
标记物：Unconjugate

克隆类型：rabbit polyclonal

### 技术规格

<b>Background:</b>	Iron-trafficking protein involved in multiple processes such as apoptosis, innate immunity and renal development. Binds iron through association with 2,5-dihydroxybenzoic acid (2,5-DHBA), a siderophore that shares structural similarities with bacterial enterobactin, and delivers or removes iron from the cell, depending on the context. Iron-bound form (holo-24p3) is internalized following binding to the SLC22A17 (24p3R) receptor, leading to release of iron and subsequent increase o
--------------------	---

	<p>f intracellular iron concentration. In contrast, association of the iron-free form (apo-24p3) with the SLC22A17 (24p3R) receptor is followed by association with an intracellular siderophore, iron chelation and iron transfer to the extracellular medium, thereby reducing intracellular iron concentration. Involved in apoptosis due to interleukin-3 (IL3) deprivation: iron-loaded form increases intracellular iron concentration without promoting apoptosis, while iron-free form decreases intracellular iron levels, inducing expression of the proapoptotic protein BCL2L11/BIM, resulting in apoptosis. Involved in innate immunity, possibly by sequestering iron, leading to limit bacterial growth.</p>
<b>Applications:</b>	ELISA, IHC
<b>Name of antibody:</b>	LCN2
<b>Immunogen:</b>	Synthetic peptide of human LCN2
<b>Full name:</b>	lipocalin 2
<b>Synonyms :</b>	24p3, MSFI, NGAL
<b>SwissProt:</b>	P80188
<b>ELISA Recommended dilution:</b>	2000-5000
<b>IHC positive control:</b>	Human brain and Human liver cancer
<b>IHC Recommend dilution:</b>	25-100



**mlbio** 酶联生物  
Good elisakit producers