

## 兔抗 SPATA5L1 多克隆抗体

中文名称：兔抗 SPATA5L1 多克隆抗体

英文名称：Anti-SPATA5L1 rabbit polyclonal antibody

相关类别：一抗

储 存：冷冻（-20℃）

宿 主：Rabbit

抗 原：SPATA5L1

反应种属：Human

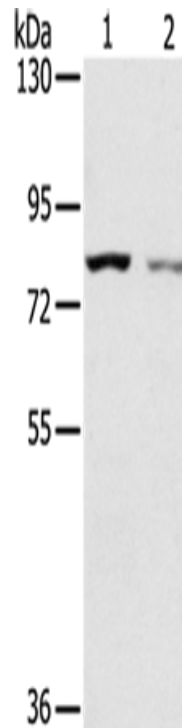
标 记 物：Unconjugate

克隆类型：rabbit polyclonal

### 技术规格

<b>Background:</b>	SPATA5L1 (spermatogenesis-associated protein 5-like protein 1) is a 753 amino acid protein belonging to the AAA ATPase family and AFG2 subfamily. Single nucleotide polymorphisms (SNPs) present in SPATA5L1 at the glycine amidinotransferase (GATM)-SPATA5L1 locus have been found to correlate with glomerular filtration rate (GFR), having significant implications for kidney disease research. SPATA5L1 localizes to cytoplasm and exists as three alternatively spliced isoforms.
<b>Applications:</b>	ELISA, WB, IHC
<b>Name of antibody:</b>	SPATA5L1
<b>Immunogen:</b>	Synthetic peptide of human SPATA5L1
<b>Full name:</b>	spermatogenesis associated 5-like 1

<b>SwissProt:</b>	Q9BVQ7
<b>ELISA Recommended dilution:</b>	1000-2000
<b>IHC positive control:</b>	Human brain and Human liver cancer
<b>IHC Recommend dilution:</b>	25-100
<b>WB Predicted band size:</b>	81 kDa
<b>WB Positive control:</b>	A549 and A172 cells
<b>WB Recommended dilution:</b>	200-1000



**mlbio** 梅联生物  
Good elisakit producers

