

兔抗 LIPG 多克隆抗体

中文名称： 兔抗 LIPG 多克隆抗体

英文名称： Anti-LIPG rabbit polyclonal antibody

别名： EL; EDL; PRO719

相关类别： 一抗

储存： 冷冻（-20℃）

宿主： Rabbit

抗原： LIPG

反应种属： Human

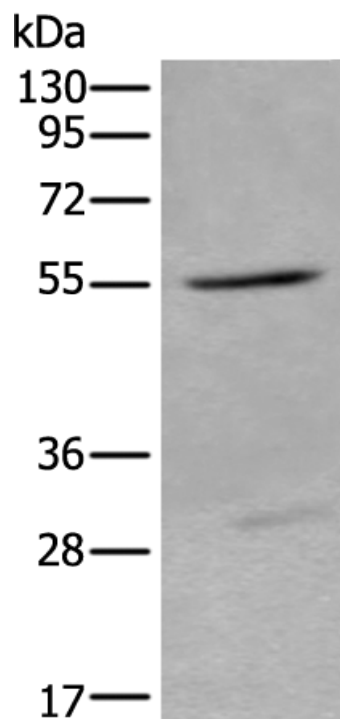
标记物： Unconjugate

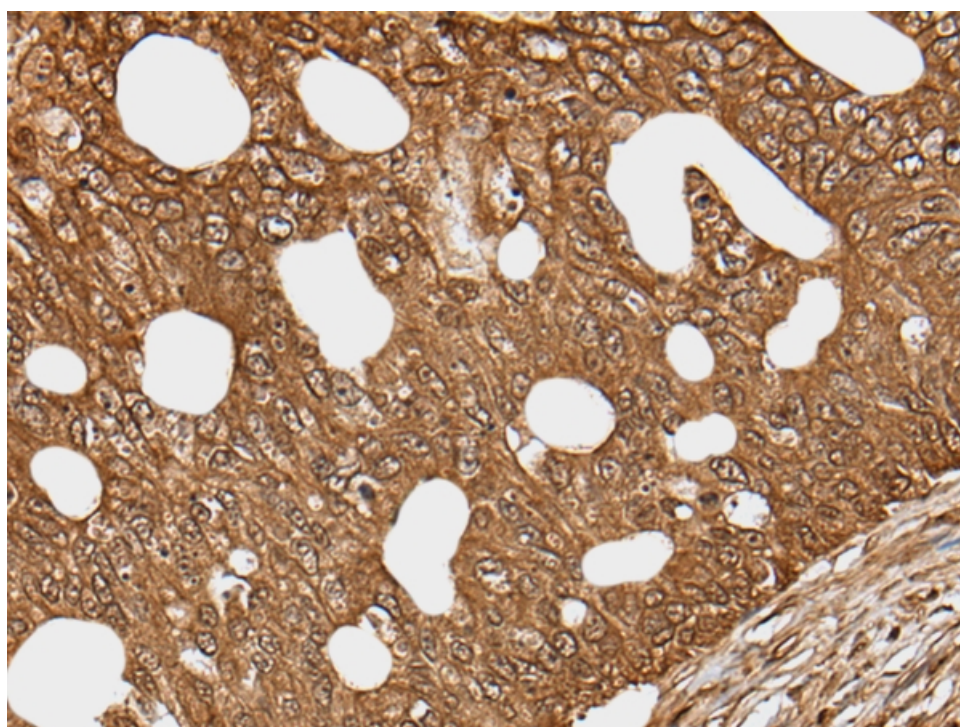
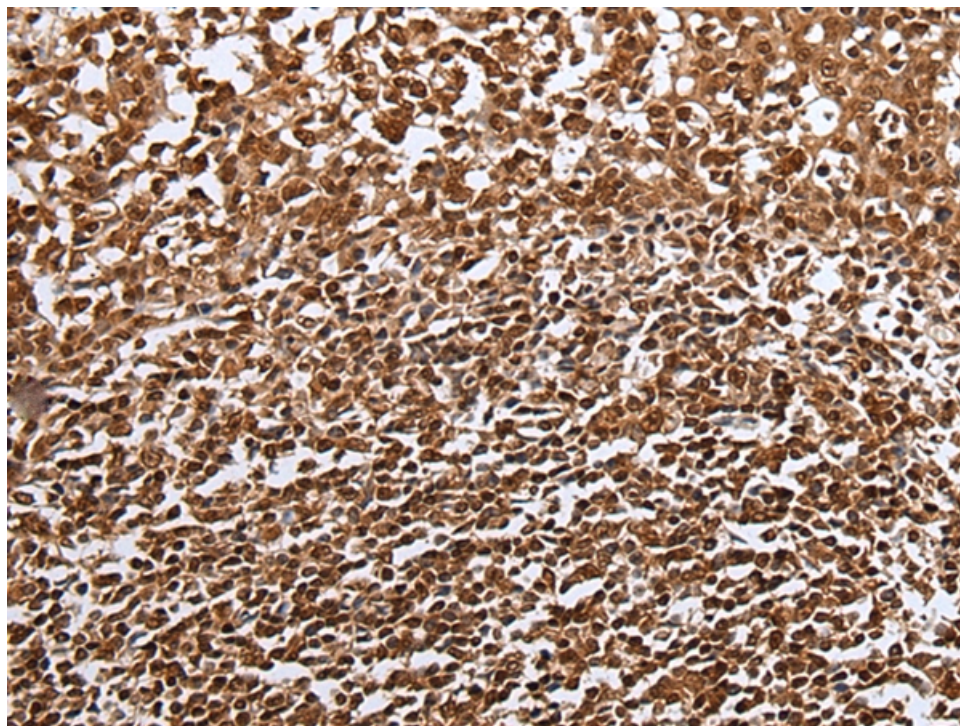
克隆类型： rabbit polyclonal

技术规格

Background:	The protein encoded by this gene has substantial phospholipase activity and may be involved in lipoprotein metabolism and vascular biology. This protein is designated a member of the TG lipase family by its sequence and characteristic lid region which provides substrate specificity for enzymes of the TG lipase family.
Applications:	ELISA, IHC
Name of antibody:	LIPG
Immunogen:	Fusion protein of human LIPG
Full name:	lipase, endothelial

Synonyms:	EL; EDL; PRO719
SwissProt:	Q9Y5X9
ELISA Recommended dilution:	5000-10000
IHC positive control:	Human esophagus cancer and human breast cancer
IHC Recommend dilution:	40-250





mlbio 梅联生物
Good elisakit producers