

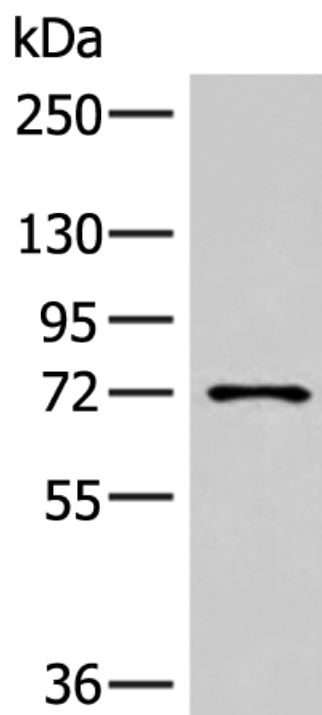
兔抗 LMLN 多克隆抗体

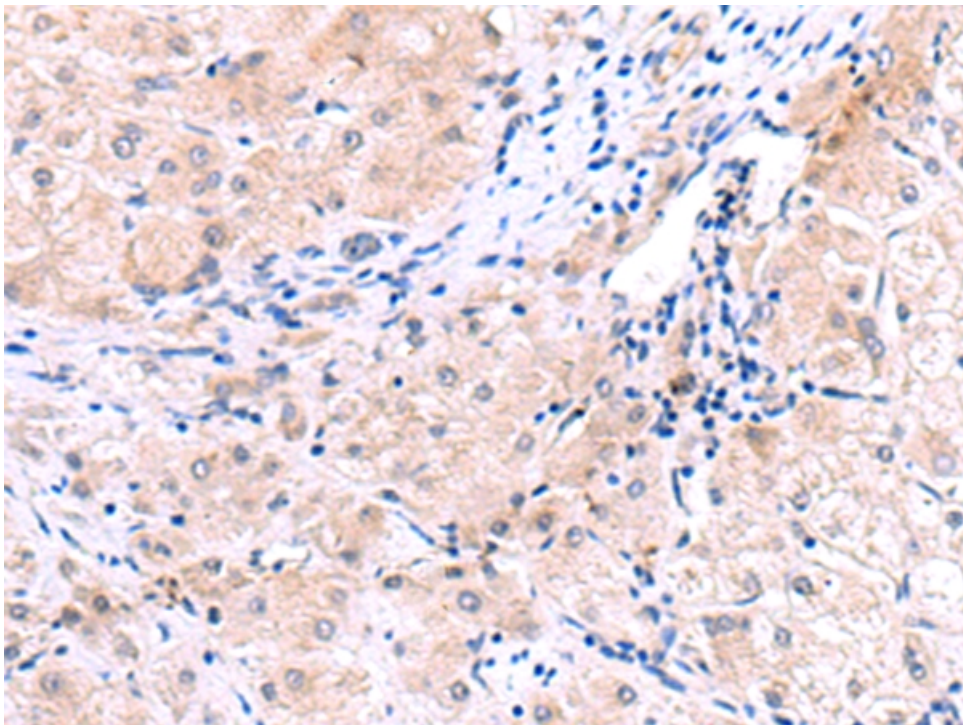
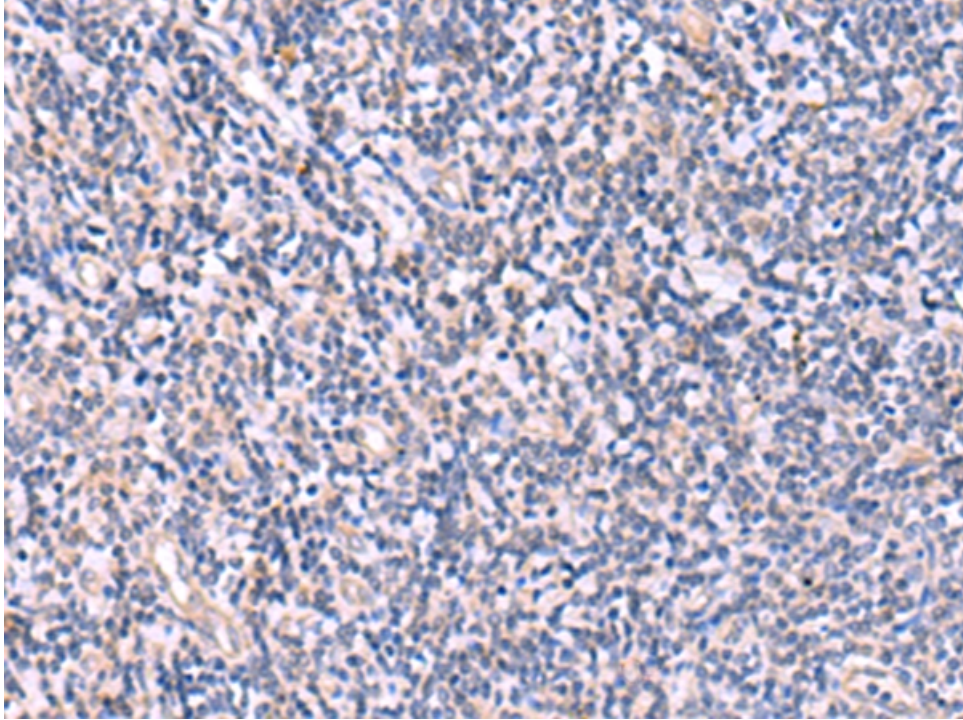
中文名称:	兔抗 LMLN 多克隆抗体
英文名称:	Anti-LMLN rabbit polyclonal antibody
别名:	leishmanolysin like peptidase; INV; MSP; GP63; IX14; LMNL1
相关类别:	一抗
储存:	冷冻 (-20℃)
宿主:	Rabbit
抗原:	LMLN
反应种属:	Human
标记物:	Unconjugate
克隆类型:	rabbit polyclonal

技术规格

Background:	This gene encodes a zinc-metallopeptidase. The encoded protein may play a role in cell migration and invasion. Studies of a similar protein in <i>Drosophila</i> indicate a potential role in mitotic progression. Alternatively spliced transcript variants have been described.
Applications:	ELISA, IHC
Name of antibody:	LMLN
Immunogen:	Synthetic peptide of human LMLN
Full name:	leishmanolysin like peptidase
Synonyms:	INV; MSP; GP63; IX14; LMNL1
SwissProt:	Q96KR4

ELISA Recommended dilution:	5000-10000
IHC positive control:	Human cervical cancer and Human tonsil
IHC Recommend dilution:	25-100





mlbio 梅联生物
Good elisakit producers