

小鼠抗 EEF2 单克隆抗体

中文名称： 小鼠抗 EEF2 单克隆抗体

英文名称： Anti-EEF2 mouse monoclonal antibody

别名： eukaryotic translation elongation factor 2; EF2; EF-2; EEF-2; SCA26

相关类别： 一抗

储存： 冷冻（-20℃）

宿主： Mouse

抗原： EEF2

反应种属： Human

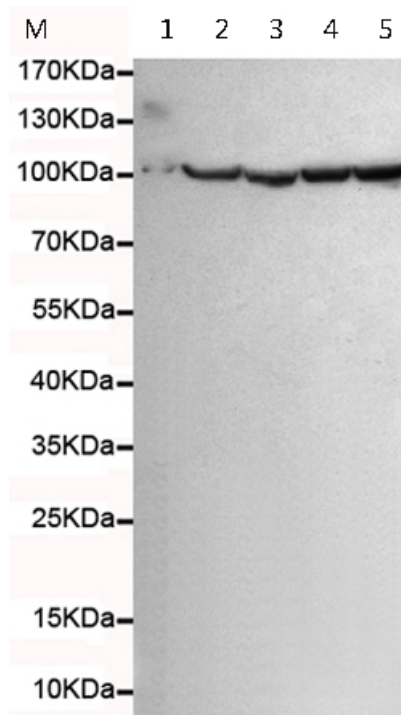
标记物： Unconjugate

克隆类型： Mouse Monoclonal

技术规格

Background:	This gene encodes a member of the GTP-binding translation elongation factor family. This protein is an essential factor for protein synthesis. It promotes the GTP-dependent translocation of the nascent protein chain from the A-site to the P-site of the ribosome. This protein is completely inactivated by EF-2 kinase phosphorylation.
Applications:	WB, IF
Name of antibody:	EEF2
Immunogen:	Fusion protein of human EEF2
Full name:	eukaryotic translation elongation factor 2
Synonyms:	EF2; EF-2; EEF-2; SCA26

SwissProt:	P13639
WB Predicted band size:	95 kDa
WB Positive control:	HL-60, Jurkat, SHSY-5Y, U20S and HeLa cell lysates
WB Recommended dilution:	1000-5000
IF positive control:	HeLa cells
IF Recommend dilution:	100-200



mlbio 酶联生物
Good elisakit producers

