

兔抗 TIMM10B 多克隆抗体

中文名称：兔抗 TIMM10B 多克隆抗体

英文名称：Anti-TIMM10B rabbit polyclonal antibody

别名：translocase of inner mitochondrial membrane 10B; FXC1; Tim9b; TIM10B

相关类别：一抗

储存：冷冻（-20℃）

宿主：Rabbit

抗原：TIMM10B

反应种属：Human, Mouse, Rat

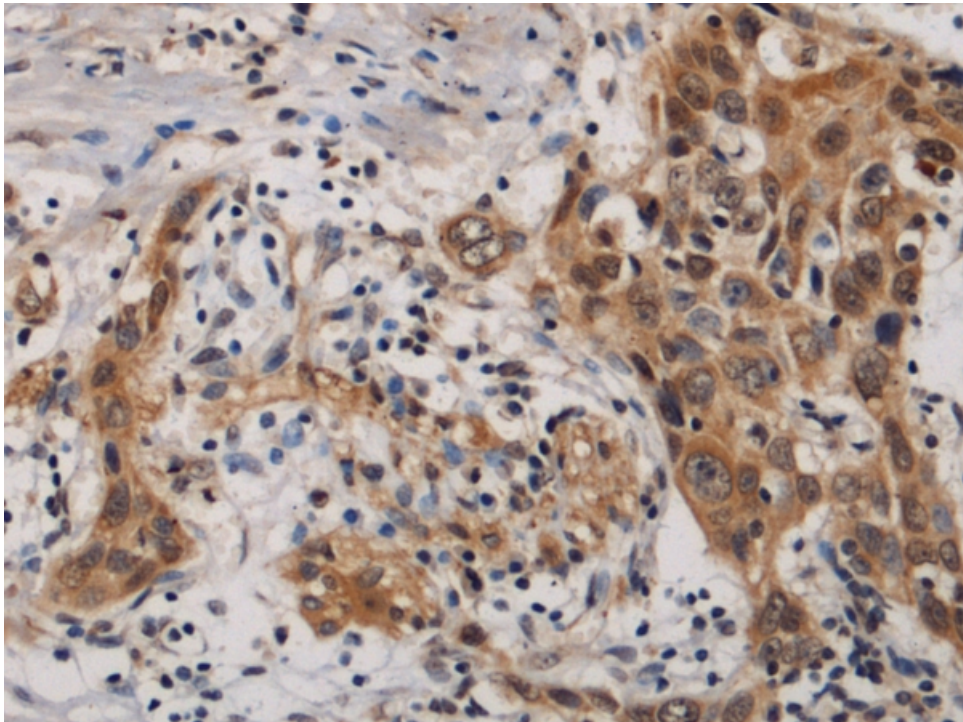
标记物：Unconjugate

克隆类型：rabbit polyclonal

技术规格

Background:	FXC1, or TIMM10B, belongs to a family of evolutionarily conserved proteins that are organized in heterooligomeric complexes in the mitochondrial intermembrane space. These proteins mediate the import and insertion of hydrophobic membrane proteins into the mitochondrial inner membrane.[supplied by OMIM, Apr 2004]
Applications:	ELISA, IHC
Name of antibody:	TIMM10B
Immunogen:	Fusion protein of human TIMM10B
Full name:	translocase of inner mitochondrial membrane 10B
Synonyms:	FXC1; Tim9b; TIM10B

SwissProt:	Q9Y5J6
ELISA Recommended dilution:	5000-10000
IHC positive control:	Human esophagus cancer
IHC Recommend dilution:	100-300



mlbio 梅联生物
Good elisakit producers