

兔抗 HSPB1 多克隆抗体

中文名称：兔抗 HSPB1 多克隆抗体

英文名称：Anti-HSPB1 rabbit polyclonal antibody

别名：CMT2F; HMN2B; HSP27; HSP28; Hsp25; SRP27; HS.76067; HEL-S-102

相关类别：一抗

储存：冷冻（-20℃）

宿主：Rabbit

抗原：HSPB1

反应种属：Human

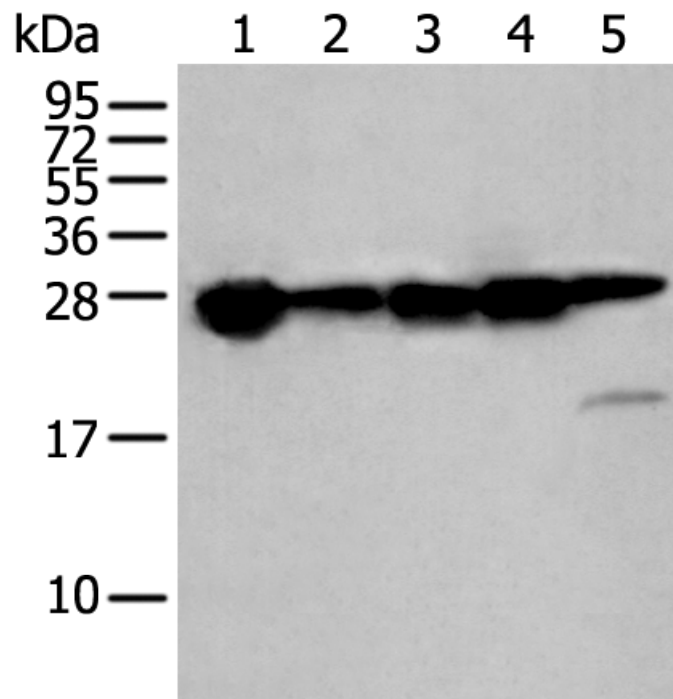
标记物：Unconjugate

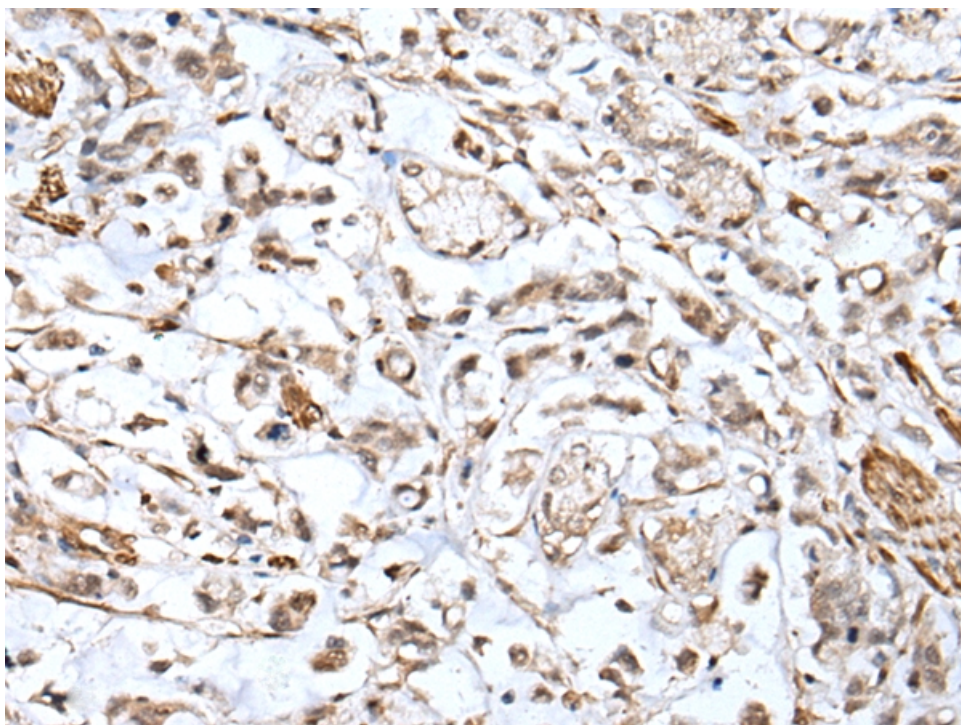
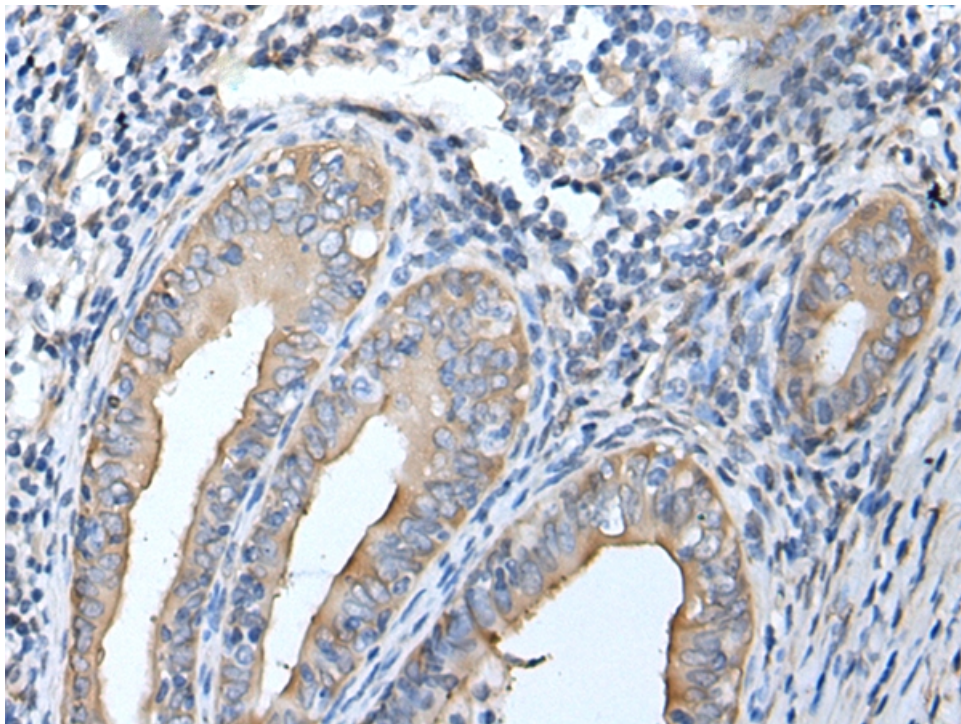
克隆类型：rabbit polyclonal

技术规格

Background:	The protein encoded by this gene is induced by environmental stress and developmental changes. The encoded protein is involved in stress resistance and actin organization and translocates from the cytoplasm to the nucleus upon stress induction. Defects in this gene are a cause of Charcot-Marie-Tooth disease type 2F (CMT 2F) and distal hereditary motor neuropathy (dHMN).
Applications:	ELISA, WB, IHC
Name of antibody:	HSPB1
Immunogen:	Synthetic peptide of human HSPB1
Full name:	heat shock 27kDa protein 1
Synonyms:	CMT2F; HMN2B; HSP27; HSP28; Hsp25; SRP27; HS.76067; HEL-S-1

	02
SwissProt:	P04792
ELISA Recommended dilution:	5000-10000
IHC positive control:	Human cervical cancer and human gastric cancer
IHC Recommend dilution:	25-100
WB Predicted band size:	23 kDa
WB Positive control:	Hepg2 , A431 , K562 , Hela and 293T cell lysates
WB Recommended dilution:	500-2000





mlbio 酶联生物
Good elisakit producers