

## 兔抗 INTS1 多克隆抗体

中文名称：兔抗 INTS1 多克隆抗体

英文名称：Anti-INTS1 rabbit polyclonal antibody

别名：INT1; NET28

相关类别：一抗

储存：冷冻（-20℃）

抗原：INTS1

宿主：Rabbit

反应种属：Human, Mouse

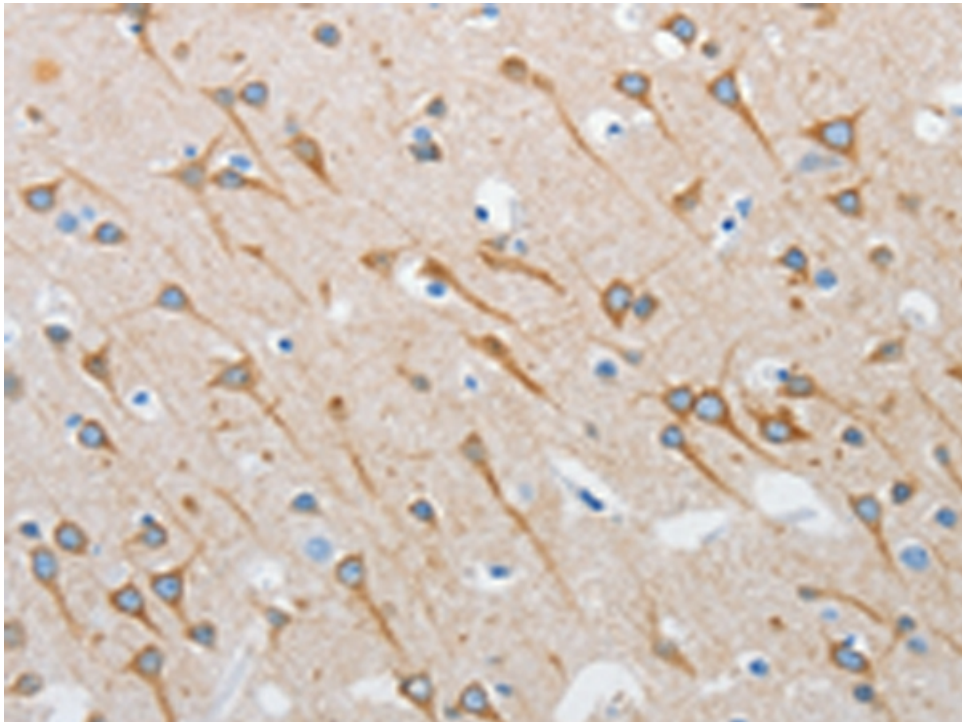
标记物：Unconjugate

克隆类型：rabbit polyclonal

### 技术规格

<b>Background:</b>	INTS1 is a subunit of the Integrator complex, which associates with the C-terminal domain of RNA polymerase II large subunit and mediates 3-prime end processing of small nuclear RNAs U1 and U2. RNA polymerase II (Pol II) is an enzyme that is composed of twelve subunits and is responsible for the transcription of protein-coding genes. Transcription initiation requires Pol II-mediated recruitment of transcription machinery to a target promoter, thereby allowing transcription to begin.
<b>Applications:</b>	ELISA, IHC
<b>Name of antibody:</b>	INTS1

<b>Immunogen:</b>	Synthetic peptide of human INTS1
<b>Full name:</b>	integrator complex subunit 1
<b>Synonyms :</b>	INT1; NET28
<b>SwissProt:</b>	Q8N201
<b>ELISA Recommended dilution:</b>	2000-5000
<b>IHC positive control:</b>	Human brain
<b>IHC Recommend dilution:</b>	25-100



**mlbio** 酶联生物  
Good elisakit producers