

## 兔抗 IPO11 多克隆抗体

中文名称: 兔抗 IPO11 多克隆抗体

英文名称: Anti-IPO11 rabbit polyclonal antibody

别名: importin 11; RanBP11

储存: 冷冻 (-20℃)

抗原: IPO11

宿主: Rabbit

相关类别: 一抗

反应种属: Human, Mouse

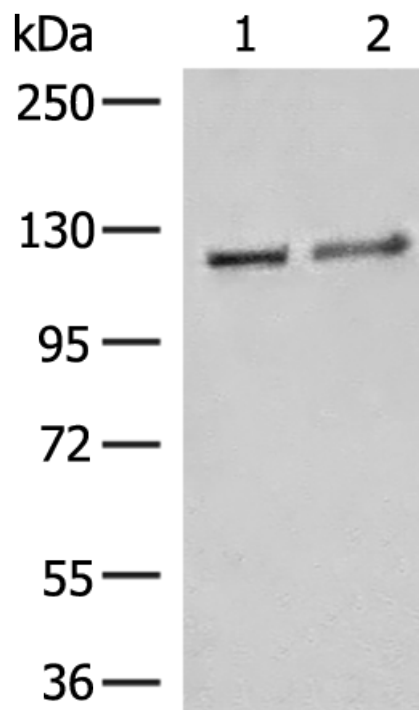
标记物: Unconjugate

克隆类型: rabbit polyclonal

### 技术规格

<b>Background:</b>	Importins, including IPO11, are a members of the karyopherin/importin-beta family of transport receptors (see KPNB1; 602738) that mediate nucleocytoplasmic transport of protein and RNA cargoes (Plafker and Macara, 2000 [PubMed 11032817]).
<b>Applications:</b>	ELISA, WB, IHC
<b>Name of antibody:</b>	IPO11
<b>Immunogen:</b>	Fusion protein of human IPO11
<b>Full name:</b>	importin 11
<b>Synonyms:</b>	RanBP11
<b>SwissProt:</b>	Q9UI26

<b>ELISA Recommended dilution:</b>	5000-10000
<b>IHC positive control:</b>	Human thyroid cancer
<b>IHC Recommend dilution:</b>	40-200
<b>WB Predicted band size:</b>	113 kDa
<b>WB Positive control:</b>	Human fetal brain tissue, K562 cell, Hela and A172 cell lysates
<b>WB Recommended dilution:</b>	500-2000



**mlbio** 酶联生物  
Good elisakit producers

