

兔抗 KCNJ15 多克隆抗体

中文名称：兔抗 KCNJ15 多克隆抗体

英文名称：Anti-KCNJ15 rabbit polyclonal antibody

别名：IRKK; KIR1.3; KIR4.2

相关类别：一抗

储存：冷冻（-20℃）

宿主：Rabbit

抗原：KCNJ15

反应种属：Human, Mouse, Rat

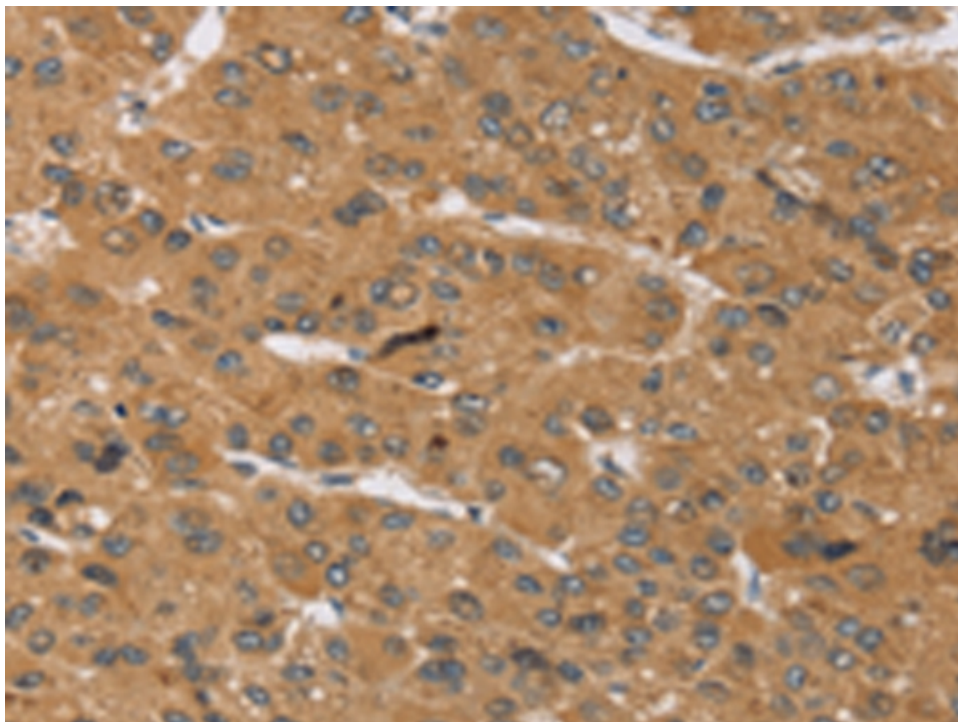
标记物：Unconjugate

克隆类型：rabbit polyclonal

技术规格

Background:	Potassium channels are present in most mammalian cells, where they participate in a wide range of physiologic responses. The protein encoded by this gene is an integral membrane protein and inward-rectifier type potassium channel. The encoded protein has a greater tendency to allow potassium to flow into a cell rather than out of a cell. Eight transcript variants encoding the same protein have been found for this gene.
Applications:	ELISA, WB, IHC
Name of antibody:	KCNJ15
Immunogen:	Synthetic peptide of human KCNJ15

Full name:	potassium inwardly-rectifying channel, subfamily J, member 15
Synonyms :	IRKK; KIR1.3; KIR4.2
SwissProt:	Q99712
ELISA Recommended dilution:	2000-5000
IHC positive control:	Human breast cancer and Human tonsil
IHC Recommend dilution:	25-100
WB Predicted band size:	43 kDa
WB Positive control:	Mouse pancreas tissue
WB Recommended dilution:	500-2000



mlbio 梅联生物
Good elisakit producers