

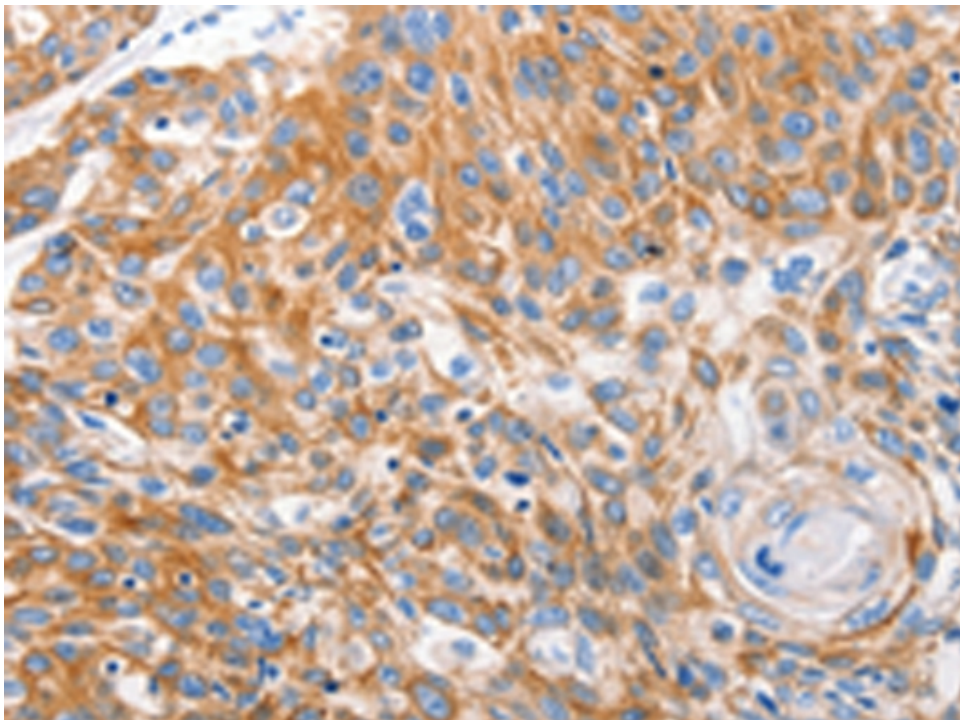
兔抗 LRP2 多克隆抗体

- 中文名称： 兔抗 LRP2 多克隆抗体
- 英文名称： Anti-LRP2 rabbit polyclonal antibody
- 别名： DBS, GP330
- 相关类别： 一抗
- 储存： 冷冻（-20℃）
- 宿主： Rabbit
- 抗原： LRP2
- 反应种属： Human, Mouse, Rat
- 标记物： Unconjugate
- 克隆类型： rabbit polyclonal

技术规格

Background:	<p>The protein encoded by this gene, low density lipoprotein-related protein 2 (LRP2) or megalin, is a multi-ligand endocytic receptor that is expressed in many different tissues but primarily in absorptive epithelial tissues such as the kidney. This glycoprotein has a large amino-terminal extracellular domain, a single transmembrane domain, and a short carboxy-terminal cytoplasmic tail. The extracellular ligand-binding-domains bind diverse macromolecules including albumin, apolipoproteins B and E, and lipoprotein lipase. The LRP2 protein is critical for the reuptake of numerous ligands, including lipoproteins, sterols, vitamin-binding proteins, and hormones. This protein</p>
--------------------	--

	also has a role in cell-signaling; extracellular ligands include parathyroid hormones and the morphogen sonic hedgehog while cytosolic ligands include MAP kinase scaffold proteins and JNK interacting proteins. Recycling of this membrane receptor is regulated by phosphorylation of its cytoplasmic domain. Mutations in this gene cause Donnai-Barrow syndrome (DBS) and facio-oculoacoustico-renal syndrome (FOAR).
Applications:	ELISA, IHC
Name of antibody:	LRP2
Immunogen:	Synthetic peptide of human LRP2
Full name:	low density lipoprotein receptor-related protein 2
Synonyms :	DBS, GP330
SwissProt:	P98164
ELISA Recommended dilution:	1000-2000
IHC positive control:	Human esophagus cancer and Human colon cancer
IHC Recommend dilution:	15-50



mlbio 酶联生物
Good elisakit producers