

兔抗 USP16 多克隆抗体

中文名称：兔抗 USP16 多克隆抗体

英文名称：Anti-USP16 rabbit polyclonal antibody

别名：ubiquitin specific peptidase 16; UBPM; UBP-M

相关类别：一抗

储存：冷冻（-20℃）

宿主：Rabbit

抗原：USP16

反应种属：Human

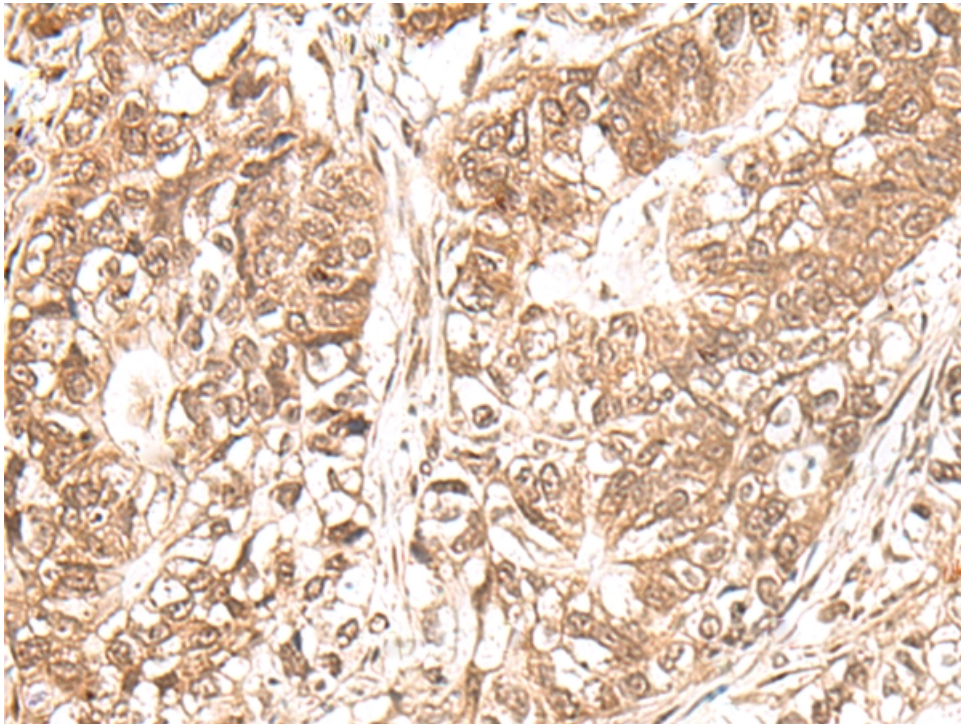
标记物：Unconjugate

克隆类型：rabbit polyclonal

技术规格

Background:	This gene encodes a deubiquitinating enzyme that is phosphorylated at the onset of mitosis and then dephosphorylated at the metaphase/anaphase transition. It can deubiquitinate H2A, one of two major ubiquitinated proteins of chromatin, in vitro and a mutant form of the protein was shown to block cell division. Alternate transcriptional splice variants, encoding different isoforms, have been characterized.
Applications:	ELISA, IHC
Name of antibody:	USP16
Immunogen:	Synthetic peptide of human USP16
Full name:	ubiquitin specific peptidase 16

Synonyms:	UBPM; UBP-M
SwissProt:	Q9Y5T5
ELISA Recommended dilution:	5000-10000
IHC positive control:	Human gastric cancer and Human ovarian cancer
IHC Recommend dilution:	30-150



mlbio 梅联生物
Good elisakit producers

