

兔抗 WDR19 多克隆抗体

中文名称: 兔抗 WDR19 多克隆抗体

英文名称: Anti-WDR19 rabbit polyclonal antibody

别名: ATD5; CED4; DYF-2; ORF26; Oseg6; PWDMP; SRTD5; IFT144; NPHP13

抗原: WDR19

储存: 冷冻 (-20℃)

宿主: Rabbit

反应种属: Human

相关类别: 一抗

标记物: Unconjugate

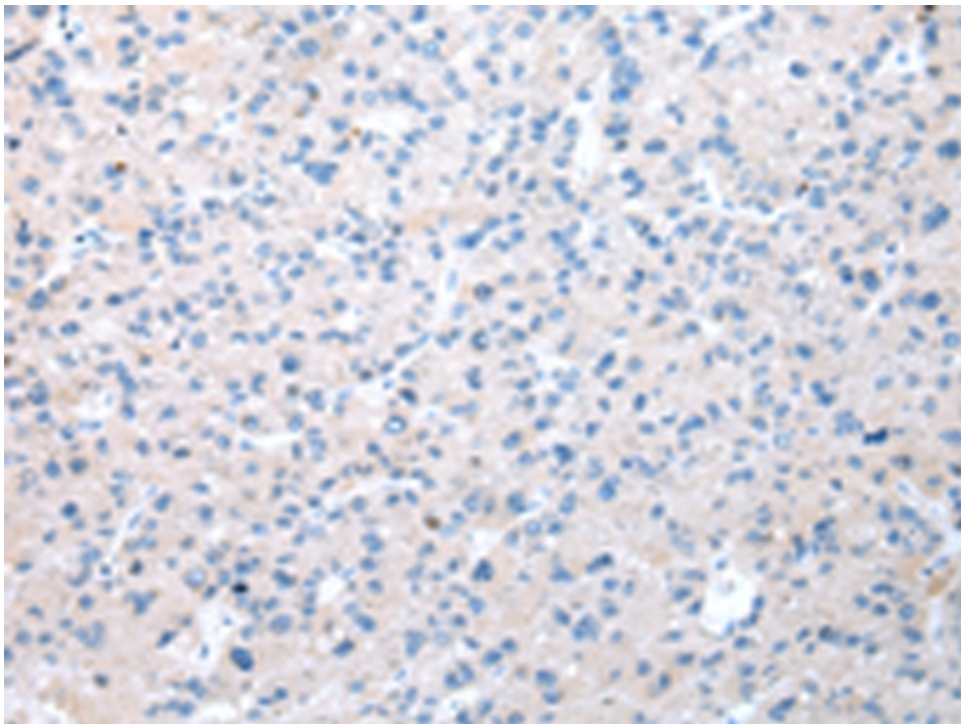
克隆类型: rabbit polyclonal

技术规格

Background:

This gene encodes a member of the WD repeat protein family. WD repeats are minimally conserved regions of approximately 40 amino acids typically bracketed by gly-his and trp-asp (GH-WD), which may facilitate formation of heterotrimeric or multiprotein complexes. Members of this family are involved in a variety of cellular processes, including cell cycle progression, signal transduction, apoptosis, and gene regulation. This protein contains six WD repeats, a clathrin heavy-chain repeat, and three transmembrane domains. This gene is conserved

	from <i>C. elegans</i> to human. It may participate in androgen-regulated signaling mechanisms or in the vesicular trafficking of androgen-regulated secretory processes. Alternatively spliced transcript variants encoding distinct isoforms have been reported but the full-length nature of one of these variants has not been defined.
Applications:	ELISA, IHC
Name of antibody:	WDR19
Immunogen:	Fusion protein of human WDR19
Full name:	WD repeat domain 19
Synonyms :	ATD5; CED4; DYF-2; ORF26; Oseg6; PWDMP; SRTD5; IFT144; NPHP13
SwissProt:	Q8NEZ3
ELISA Recommended dilution:	2000-5000
IHC positive control:	Human liver cancer
IHC Recommend dilution:	25-100



mlbio 梅联生物
Good elisakit producers