

## 兔抗 YBX1 多克隆抗体

中文名称：兔抗 YBX1 多克隆抗体

英文名称：Anti-YBX1 rabbit polyclonal antibody

别名：Y-box binding protein 1; YB1; BP-8; CSDB; DBPB; YB-1; CBF-A; CSDA2; EFI-A; NSEP1; NSEP-1; MDR-NF1

相关类别：一抗

储存：冷冻（-20℃）

宿主：Rabbit

抗原：YBX1

反应种属：Human, Mouse, Rat

标记物：Unconjugate

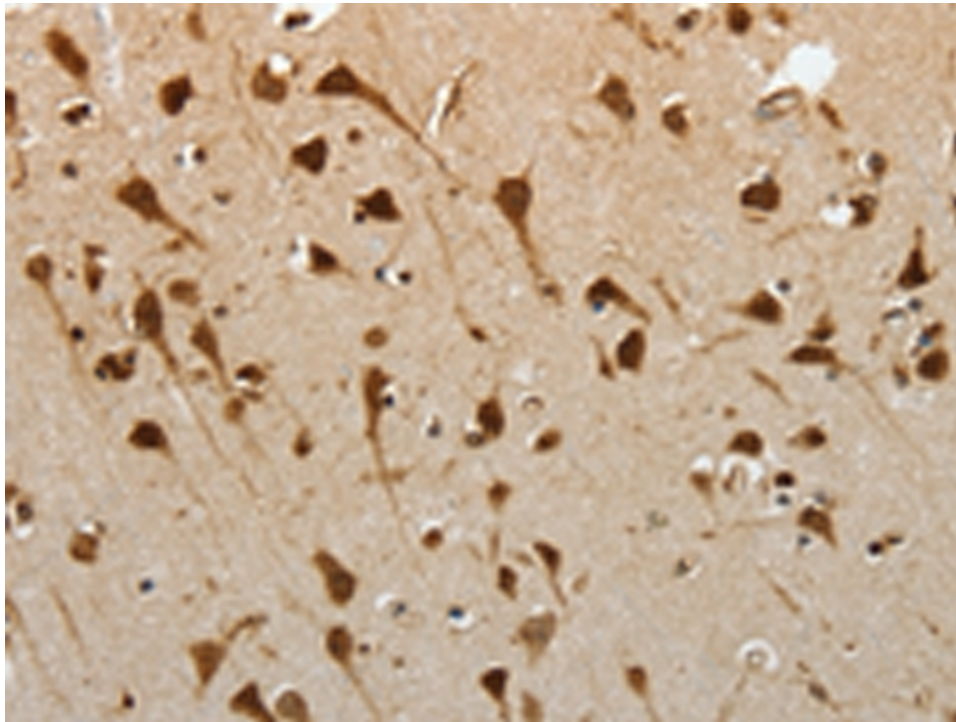
克隆类型：rabbit polyclonal

### 技术规格

**Background:**

This gene encodes a highly conserved cold shock domain protein that has broad nucleic acid binding properties. The encoded protein functions as both a DNA and RNA binding protein and has been implicated in numerous cellular processes including regulation of transcription and translation, pre-mRNA splicing, DNA repair and mRNA packaging. This protein is also a component of messenger ribonucleoprotein (mRNP) complexes and may have a role in microRNA processing. This protein can be secreted through non-classical pathways and functions as an extracellular mitogen. Aberrant expression

	of the gene is associated with cancer proliferation in numerous tissues. This gene may be a prognostic marker for poor outcome and drug resistance in certain cancers. Alternate splicing results in multiple transcript variants. Pseudogenes of this gene are found on multiple chromosomes.
<b>Applications:</b>	ELISA, IHC
<b>Name of antibody:</b>	YBX1
<b>Immunogen:</b>	Synthetic peptide of human YBX1
<b>Full name:</b>	Y-box binding protein 1
<b>Synonyms:</b>	YB1; BP-8; CSDB; DBPB; YB-1; CBF-A; CSDA2; EFI-A; NSE P1; NSEP-1; MDR-NF1
<b>SwissProt:</b>	P67809
<b>ELISA Recommended dilution:</b>	5000-10000
<b>IHC positive control:</b>	Human cervical cancer and human ovarian cancer
<b>IHC Recommend dilution:</b>	30-150



**mlbio** 梅联生物  
Good elisakit producers