

兔抗 YTHDF1 多克隆抗体

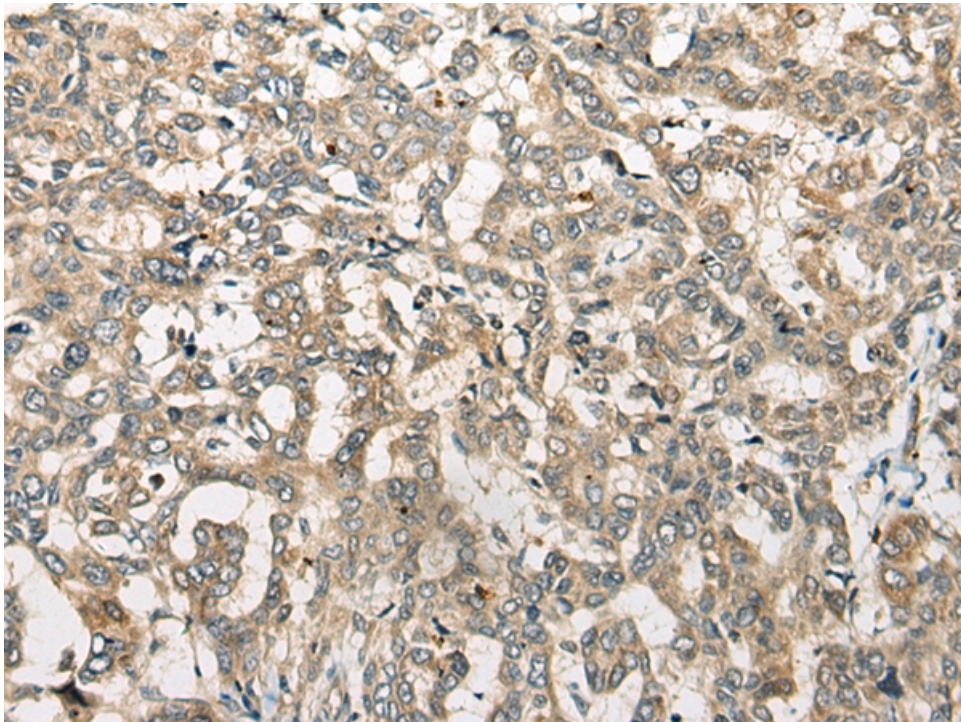
- 中文名称：兔抗 YTHDF1 多克隆抗体
- 英文名称：Anti-YTHDF1 rabbit polyclonal antibody
- 别名：YTH N6-methyladenosine RNA binding protein 1; C20orf21
- 相关类别：一抗
- 储存：冷冻（-20℃）
- 宿主：Rabbit
- 抗原：YTHDF1
- 反应种属：Human, Mouse
- 标记物：Unconjugate
- 克隆类型：rabbit polyclonal

技术规格

Background:

YTHDF1, also designated Dermatomyositis associated with cancer putative autoantigen 1 (DACA-1), is a 559 amino acid protein that contains one YTH domain, which is a potential RNA binding domain. Specifically recognizes and binds N6-methyladenosine (m6A)-containing mRNAs, and promotes mRNA translation efficiency (PubMed:24284625, PubMed:26046440, PubMed:26318451). M6A is a modification present at internal sites of mRNAs and some non-coding RNAs and plays a role in the efficiency of mRNA splicing, processing and stability (PubMed:24284625). Acts as a regulator of mRNA translation efficiency: promotes ribosome loading to m6A-cont

	aining mRNAs and interacts with translation initiation factors eIF3 (EIF3A or EIF3B) to facilitate translation initiation (PubMed:26046440).
Applications:	ELISA, IHC
Name of antibody:	YTHDF1
Immunogen:	Synthetic peptide of human YTHDF1
Full name:	YTH N6-methyladenosine RNA binding protein 1
Synonyms:	C20orf21
SwissProt:	Q9BYJ9
ELISA Recommended dilution:	5000-10000
IHC positive control:	Human cervical cancer
IHC Recommend dilution:	40-200



mlbio 梅联生物
Good elisakit producers