

兔抗 GZMM 多克隆抗体

中文名称：兔抗 GZMM 多克隆抗体

英文名称：Anti-GZMM rabbit polyclonal antibody

别名：MET1; LMET1

相关类别：一抗

储存：冷冻（-20℃）

宿主：Rabbit

抗原：GZMM

反应种属：Human, Rat

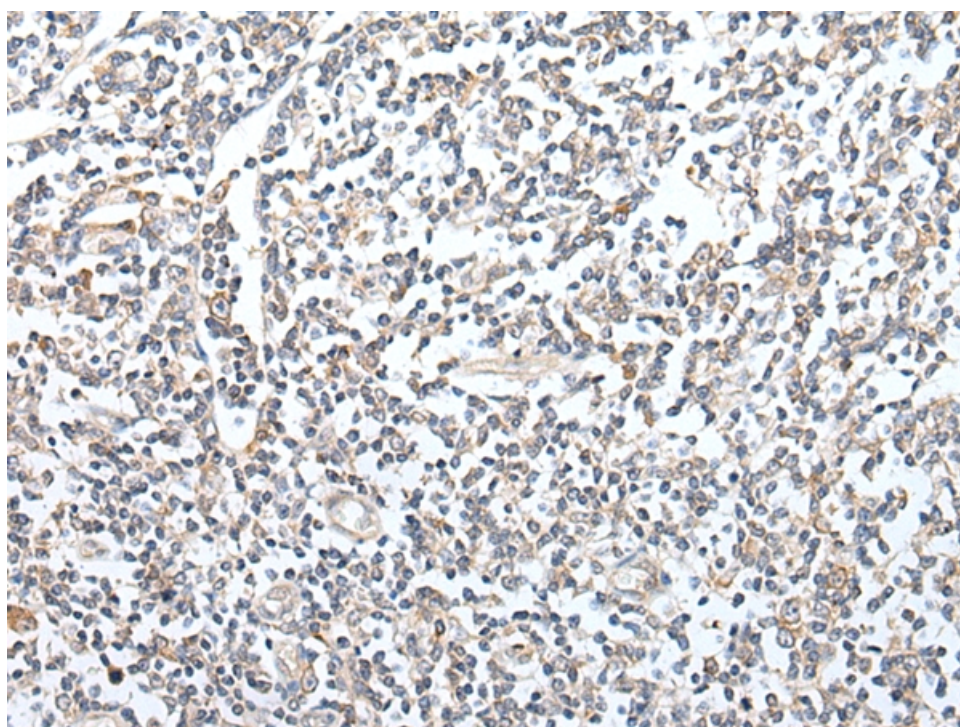
标记物：Unconjugate

克隆类型：Unconjugate

技术规格

Background:	Human natural killer (NK) cells and activated lymphocytes express and store a distinct subset of neutral serine proteases together with proteoglycans and other immune effector molecules in large cytoplasmic granules. These serine proteases are collectively termed granzymes and include 4 distinct gene products: granzyme A, granzyme B, granzyme H, and the protein encoded by this gene, granzyme M. Two transcript variants encoding different isoforms have been found for this gene.
Applications:	ELISA, IHC

Name of antibody:	GZMM
Immunogen:	Synthetic peptide of human GZMM
Full name:	granzyme M (lymphocyte met-ase 1)
Synonyms :	MET1; LMET1
SwissProt:	P51124
ELISA Recommended dilution:	5000-10000
IHC positive control:	Human tonsil
IHC Recommend dilution:	20-100



mlbio 酶联生物
Good elisakit producers