

## 兔抗 GSTM4 多克隆抗体

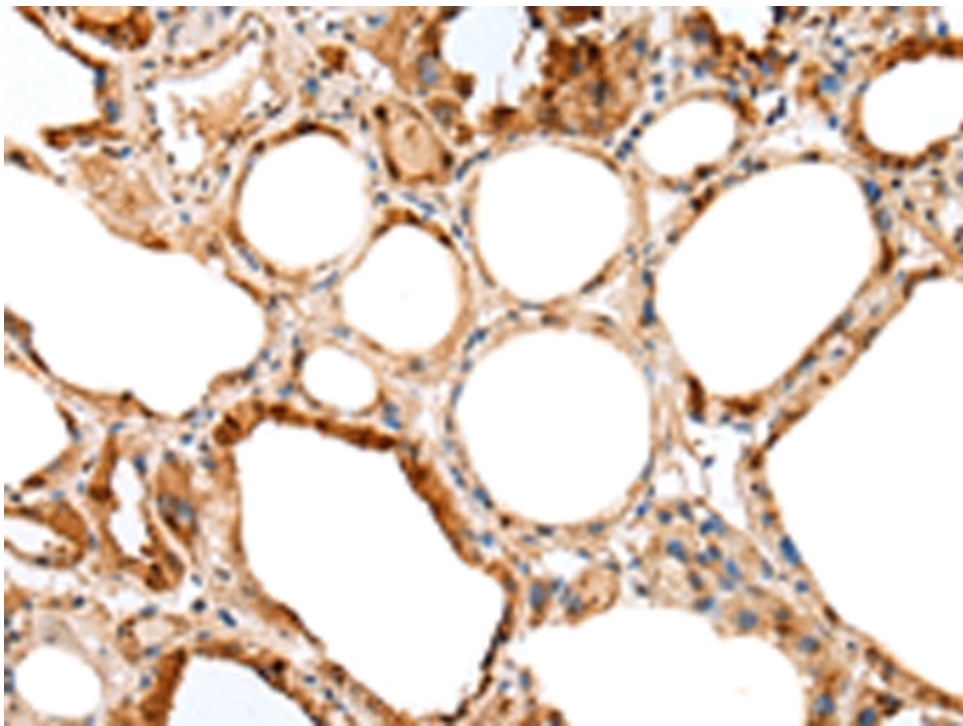
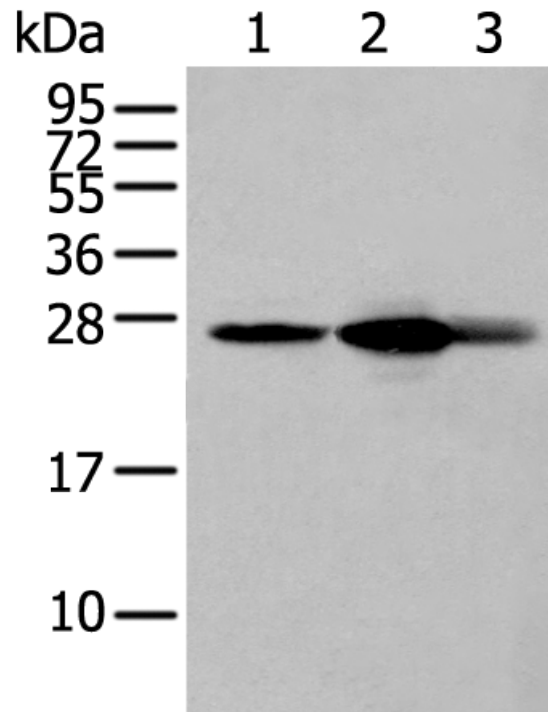
- 中文名称：兔抗 GSTM4 多克隆抗体
- 英文名称：Anti-GSTM4 rabbit polyclonal antibody
- 别名：GTM4; GSTM4-4
- 相关类别：一抗
- 储存：冷冻（-20℃）
- 抗原：GSTM4
- 宿主：Rabbit
- 反应种属：Human
- 标记物：Unconjugate
- 克隆类型：rabbit polyclonal

### 技术规格

**Background:**

Cytosolic and membrane-bound forms of glutathione S-transferase are encoded by two distinct supergene families. At present, eight distinct classes of the soluble cytoplasmic mammalian glutathione S-transferases have been identified: alpha, kappa, mu, omega, pi, sigma, theta and zeta. This gene encodes a glutathione S-transferase that belongs to the mu class. The mu class of enzymes functions in the detoxification of electrophilic compounds, including carcinogens, therapeutic drugs, environmental toxins and products of oxidative stress, by conjugation with glutathione. The genes encoding the mu class of e

	<p>nzymes are organized in a gene cluster on chromosome 1p13.3 and are known to be highly polymorphic. These genetic variations can change an individual's susceptibility to carcinogens and toxins as well as affect the toxicity and efficacy of certain drugs. Diversification of these genes has occurred in regions encoding substrate-binding domains, as well as in tissue expression patterns, to accommodate an increasing number of foreign compounds. Multiple transcript variants, each encoding a distinct protein isoform, have been identified.</p>
<b>Applications:</b>	ELISA, WB, IHC
<b>Name of antibody:</b>	GSTM4
<b>Immunogen:</b>	Full length fusion protein
<b>Full name:</b>	glutathione S-transferase mu 4
<b>Synonyms :</b>	GTM4; GSTM4-4
<b>SwissProt:</b>	Q03013
<b>ELISA Recommended dilution:</b>	5000-10000
<b>IHC positive control:</b>	Human thyroid cancer and human lung cancer
<b>IHC Recommend dilution:</b>	10-50
<b>WB Predicted band size:</b>	26 kDa
<b>WB Positive control:</b>	Mouse liver tissue , Mouse lung tissue
<b>WB Recommended dilution:</b>	200-1000



**mlbio** 梅联生物  
Good elisakit producers