

## 兔抗 RBL2 多克隆抗体

中文名称: 兔抗 RBL2 多克隆抗体

英文名称: Anti-RBL2 rabbit polyclonal antibody

别名: Rb2; P130

储存: 冷冻 (-20℃)

抗原: RBL2

宿主: Rabbit

反应种属: Human, Mouse, Rat

相关类别: 一抗

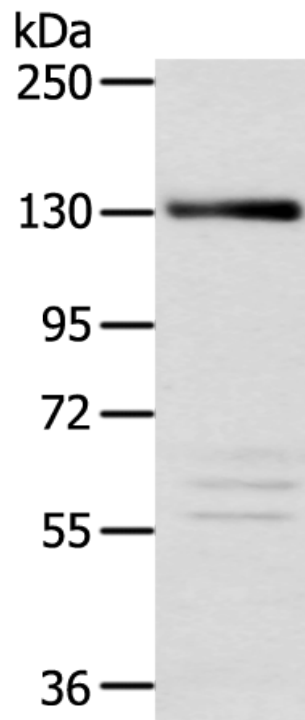
标记物: Unconjugate

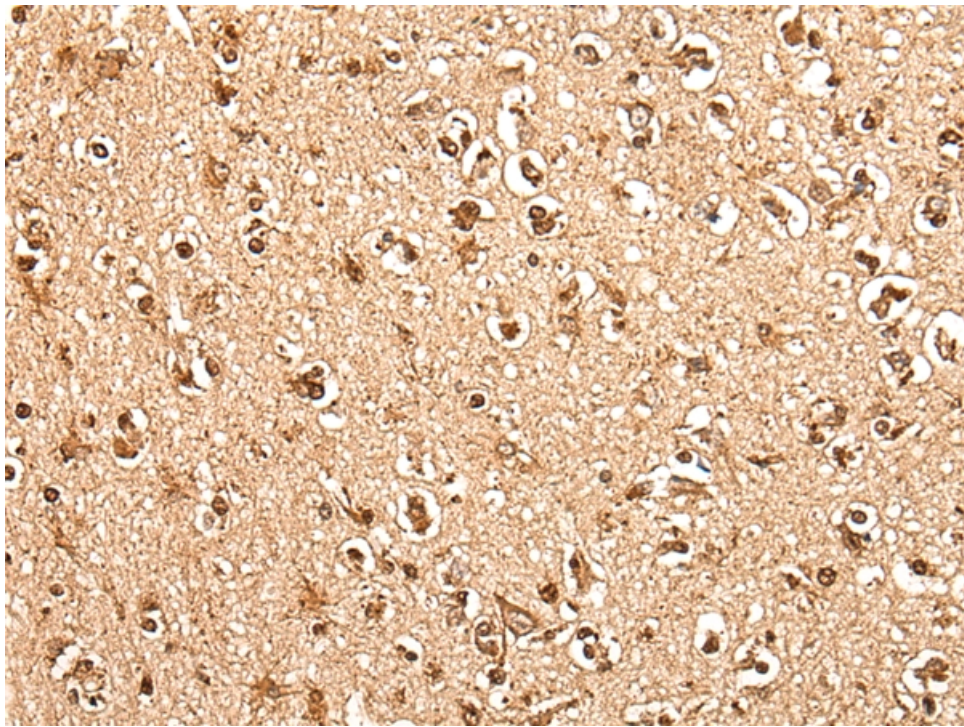
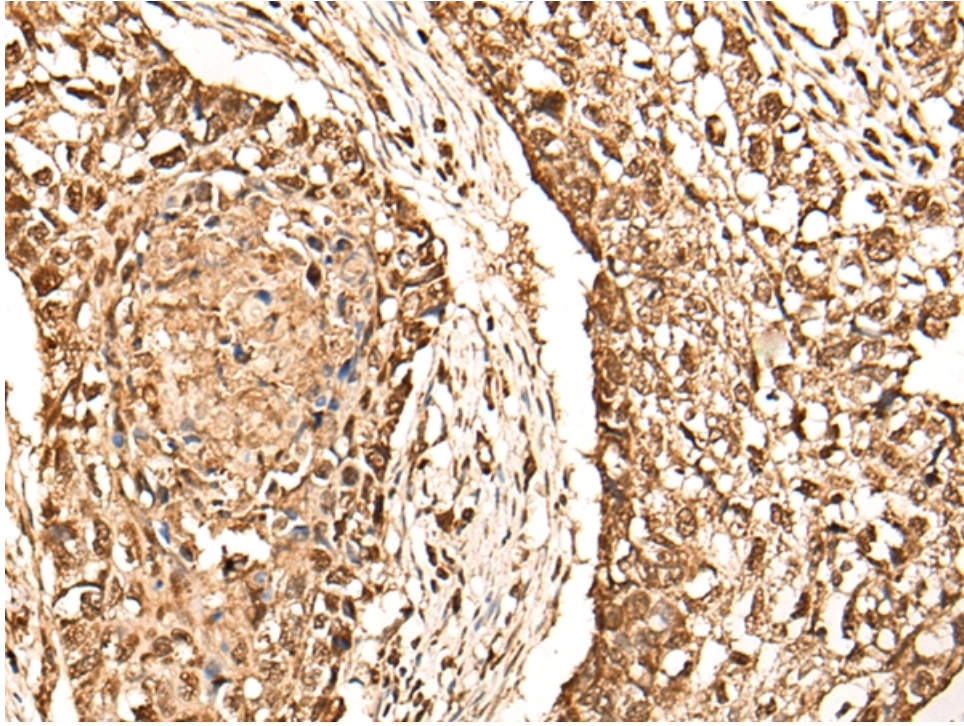
克隆类型: rabbit polyclonal

### 技术规格

<b>Background:</b>	Retinoblastoma-like protein 2 is a protein that in humans is encoded by the RBL2 gene. Key regulator of entry into cell division. Directly involved in heterochromatin formation by maintaining overall chromatin structure and, in particular, that of constitutive heterochromatin by stabilizing histone methylation. Recruits and targets histone methyltransferases SUV420H1 and SUV420H2, leading to epigenetic transcriptional repression. Controls histone H4 'Lys-20' trimethylation.
<b>Applications:</b>	ELISA, WB, IHC
<b>Name of antibody:</b>	RBL2
<b>Immunogen:</b>	Synthetic peptide of human RBL2

<b>Full name:</b>	retinoblastoma-like 2
<b>Synonyms:</b>	Rb2; P130
<b>SwissProt:</b>	Q08999
<b>ELISA Recommended dilution:</b>	5000-10000
<b>IHC positive control:</b>	Human lung cancer and human brain
<b>IHC Recommend dilution:</b>	30-150
<b>WB Predicted band size:</b>	128 kDa
<b>WB Positive control:</b>	Lncap cell
<b>WB Recommended dilution:</b>	200-1000





**mlbio** 梅联生物  
Good elisakit producers