

## 兔抗 RBM19 多克隆抗体

中文名称: 兔抗 RBM19 多克隆抗体

英文名称: Anti-RBM19 rabbit polyclonal antibody

别名: RNA binding motif protein 19; Mrd1

储存: 冷冻 (-20℃)

抗原: RBM19

宿主: Rabbit

反应种属: Human, Mouse

相关类别: 一抗

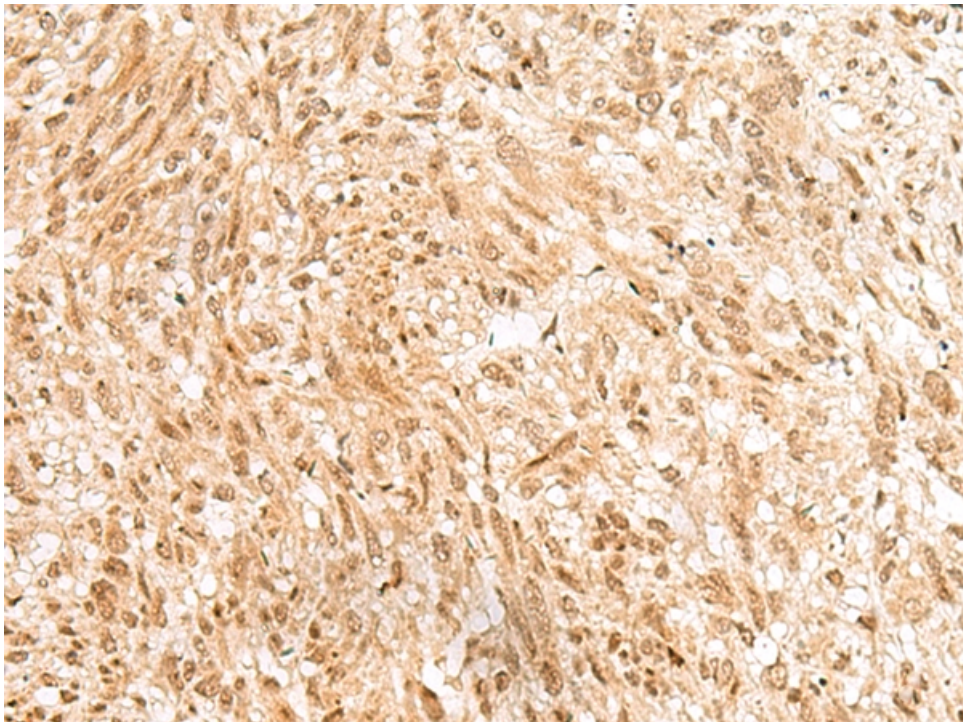
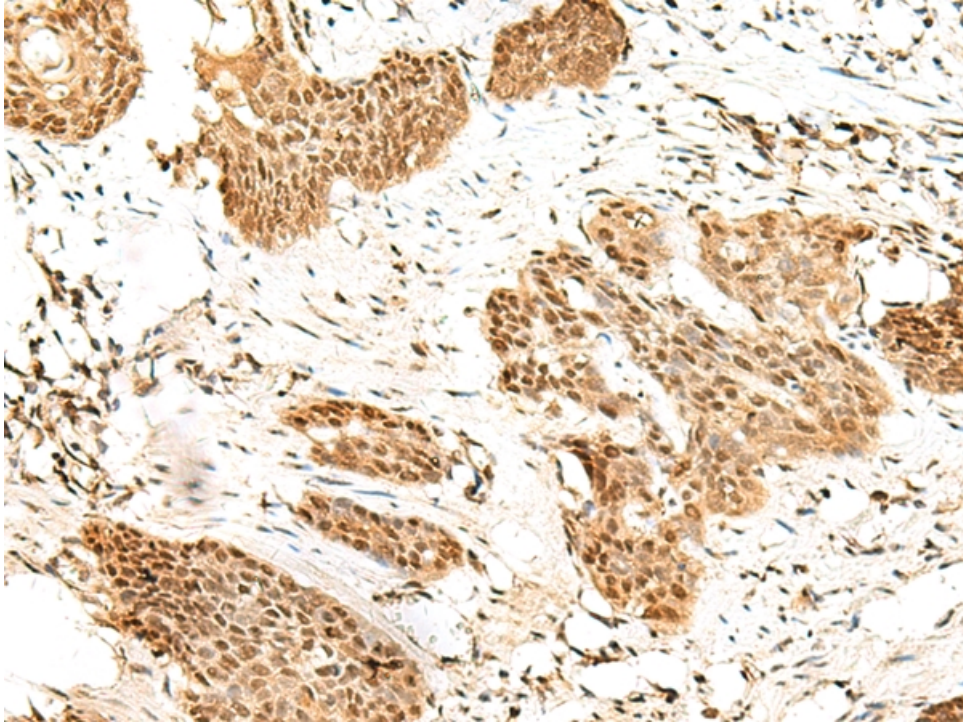
标记物: Unconjugate

克隆类型: rabbit polyclonal

### 技术规格

<b>Background:</b>	This gene encodes a nucleolar protein that contains six RNA-binding motifs. The encoded protein may be involved in regulating ribosome biogenesis. Multiple alternatively spliced variants, encoding the same protein, have been identified.
<b>Applications:</b>	ELISA, IHC
<b>Name of antibody:</b>	RBM19
<b>Immunogen:</b>	Fusion protein of human RBM19
<b>Full name:</b>	RNA binding motif protein 19
<b>Synonyms:</b>	Mrd1
<b>SwissProt:</b>	Q9Y4C8
<b>ELISA Recommended dilution:</b>	5000-10000

<b>IHC positive control:</b>	Human thyroid cancer and Human cervical cancer
<b>IHC Recommend dilution:</b>	30-150



**mlbio** 梅联生物  
Good elisakit producers