

兔抗 RPL14 多克隆抗体

中文名称：兔抗 RPL14 多克隆抗体

英文名称：Anti-RPL14 rabbit polyclonal antibody

别名：ribosomal protein L14; L14; RL14; hRL14; CTG-B33; CAG-ISL-7

相关类别：一抗

抗原：RPL14

储存：冷冻（-20℃）

宿主：Rabbit

反应种属：Human, Mouse, Rat

标记物：Unconjugate

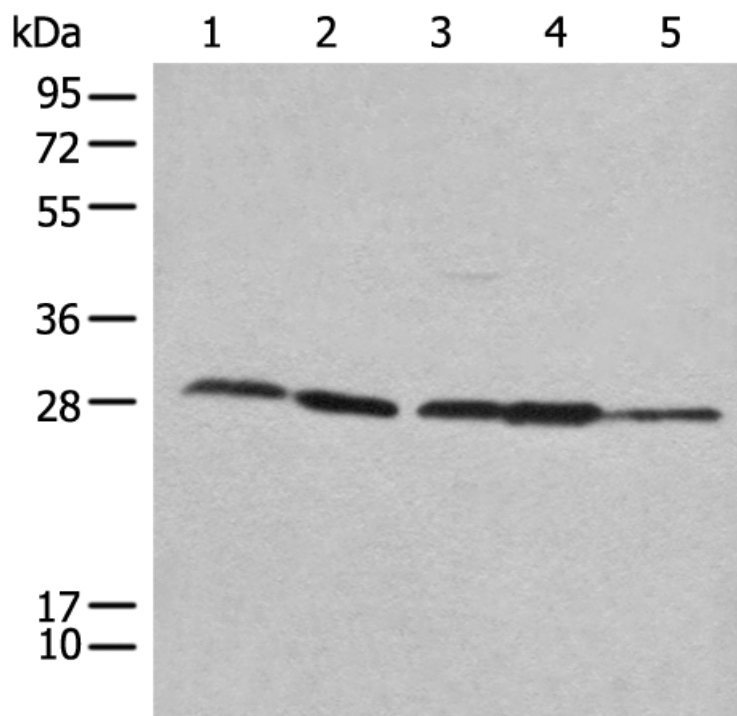
克隆类型：rabbit polyclonal

技术规格

Background:

Ribosomes, the organelles that catalyze protein synthesis, consist of a small 40S subunit and a large 60S subunit. Together these subunits are composed of 4 RNA species and approximately 80 structurally distinct proteins. This gene encodes a ribosomal protein that is a component of the 60S subunit. The protein belongs to the L14E family of ribosomal proteins. It contains a basic region-leucine zipper (bZIP)-like domain. The protein is located in the cytoplasm. This gene contains a trinucleotide (GCT) repeat tract whose length is highly polymorphic; these triplet repeats result

	in a stretch of alanine residues in the encoded protein. Transcript variants utilizing alternative polyA signals and alternative 5'-terminal exons exist but all encode the same protein. As is typical for genes encoding ribosomal proteins, there are multiple processed pseudogenes of this gene dispersed through the genome.
Applications:	ELISA, WB
Name of antibody:	RPL14
Immunogen:	Synthetic peptide of human RPL14
Full name:	ribosomal protein L14
Synonyms:	L14; RL14; hRL14; CTG-B33; CAG-ISL-7
SwissProt:	P50914
ELISA Recommended dilution:	5000-10000
WB Predicted band size:	23 kDa
WB Positive control:	293T , HeLa , 231 , HEPG2 and A431 cell lysates
WB Recommended dilution:	500-2000



mlbio 梅联生物
Good elisakit producers