

兔抗 RWDD1 多克隆抗体

中文名称: 兔抗 RWDD1 多克隆抗体

英文名称: Anti-RWDD1 rabbit polyclonal antibody

别名: RWD domain containing 1; CGI-24; PTD013

相关类别: 一抗

抗原: RWDD1

储存: 冷冻 (-20℃)

宿主: Rabbit

反应种属: Human, Mouse, Rat

标记物: Unconjugate

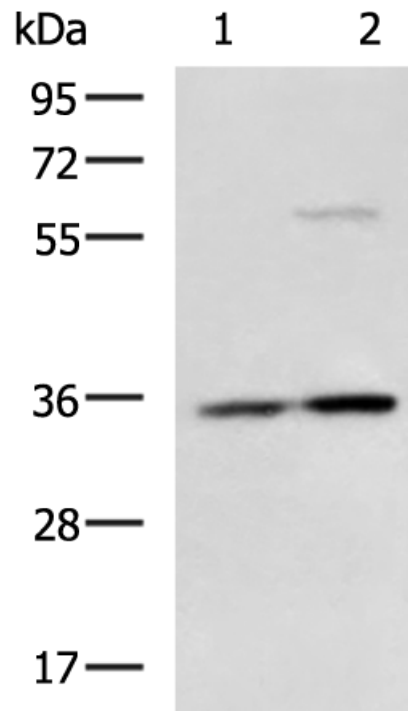
克隆类型: rabbit polyclonal

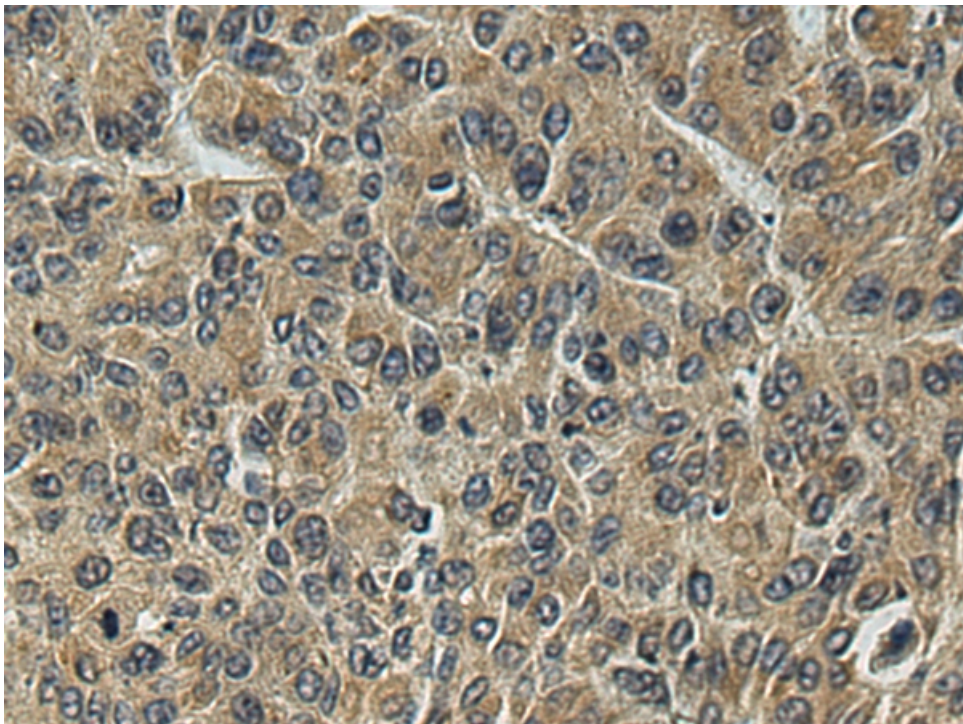
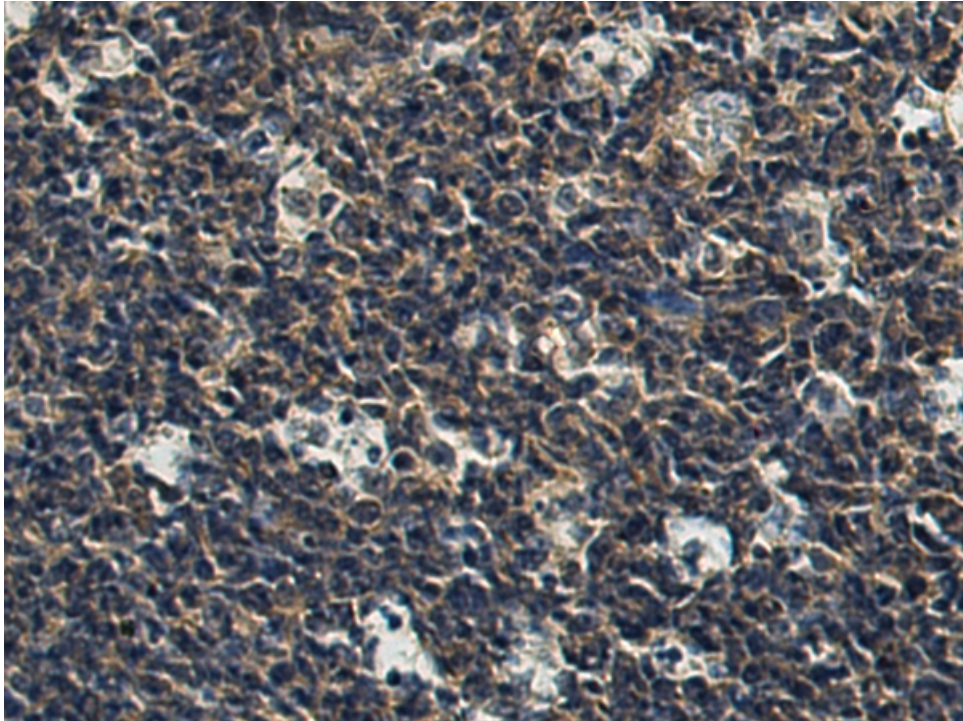
技术规格

Background:	Protects DRG2 from proteolytic degradation.
Applications:	ELISA, WB, IHC
Name of antibody:	RWDD1
Immunogen:	Fusion protein of human RWDD1
Full name:	RWD domain containing 1
Synonyms:	CGI-24; PTD013
SwissProt:	Q9H446
ELISA Recommended dilution:	5000-10000
IHC positive control:	Human liver cancer and Human tonsil
IHC Recommend dilution:	200-400
WB Predicted band size:	28 kDa
WB Positive control:	Hela and HepG2 cell lysates

WB Recommended dilution:

1000-5000





mlbio 梅联生物
Good elisakit producers