

兔抗 SCGB2A1 多克隆抗体

中文名称：兔抗 SCGB2A1 多克隆抗体

英文名称：Anti-SCGB2A1 rabbit polyclonal antibody

级 别：LPHC; LPNC; MGB2; UGB3

储 存：冷冻 (-20℃)

抗 原：SCGB2A1

宿 主：Rabbit

相关类别：一抗

反应种属：Human

标 记 物：Unconjugate

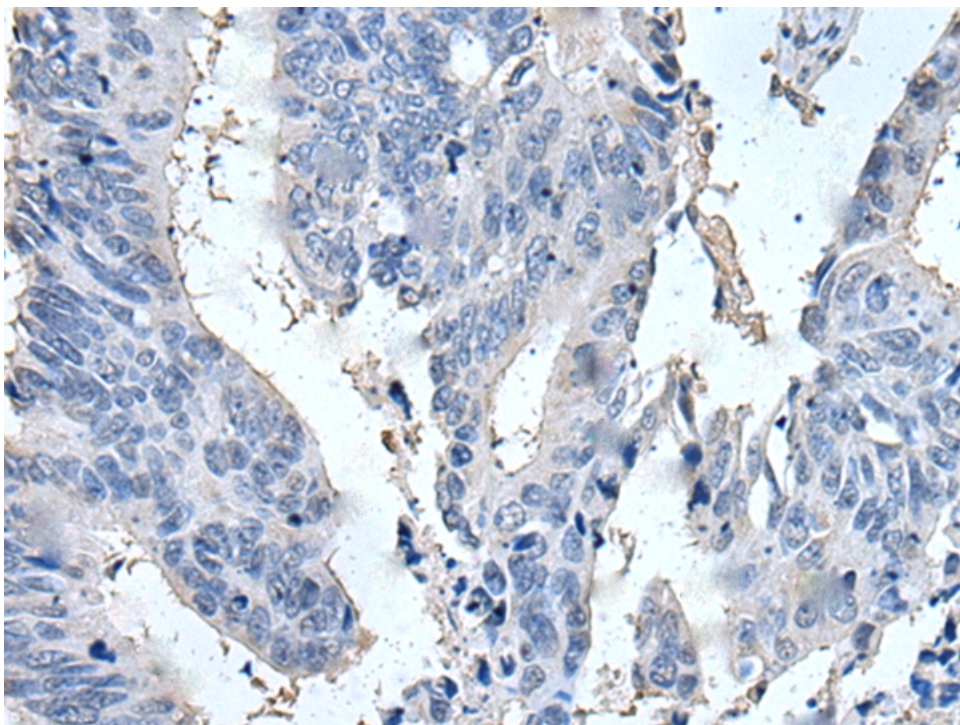
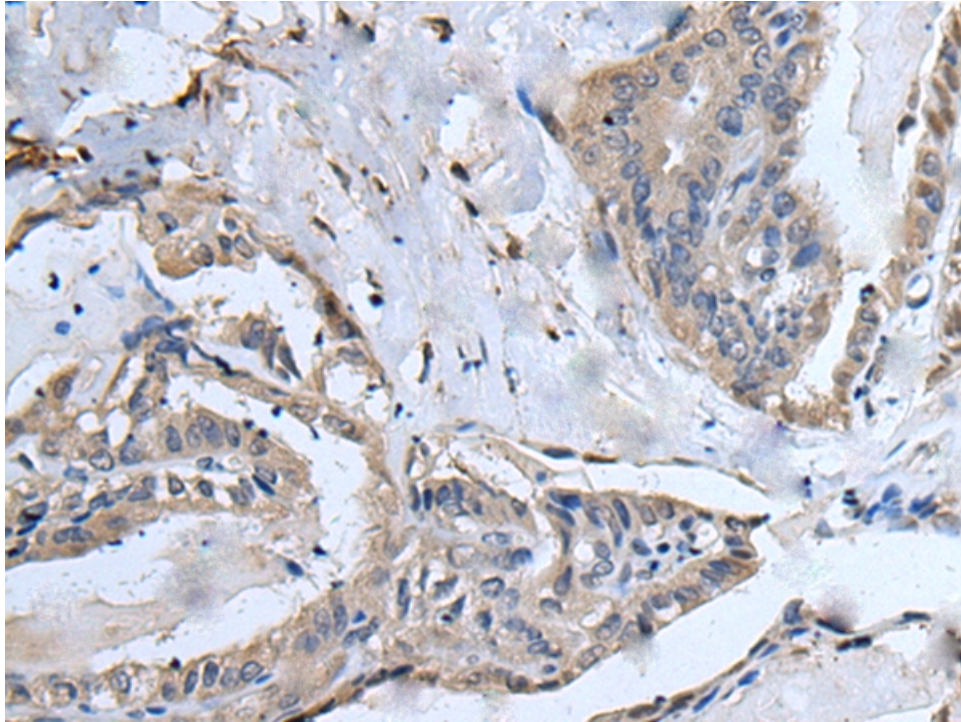
克隆类型：rabbit polyclonal

技术规格

Background:	May bind androgens and other steroids, may also bind estramustine, a chemotherapeutic agent used for prostate cancer. May be under transcriptional regulation of steroid hormones.
Applications:	ELISA, IHC
Name of antibody:	SCGB2A1
Immunogen:	Synthetic peptide of human SCGB2A1
Full name:	secretoglobin family 2A member 1
Synonyms:	LPHC; LPNC; MGB2; UGB3
SwissProt:	O75556
ELISA Recommended dilution:	5000-10000
IHC positive control:	Human esophagus cancer and human breast cancer

IHC Recommend dilution:

25-100



mlbio 梅联生物
Good elisakit producers