

兔抗 SLAMF7 多克隆抗体

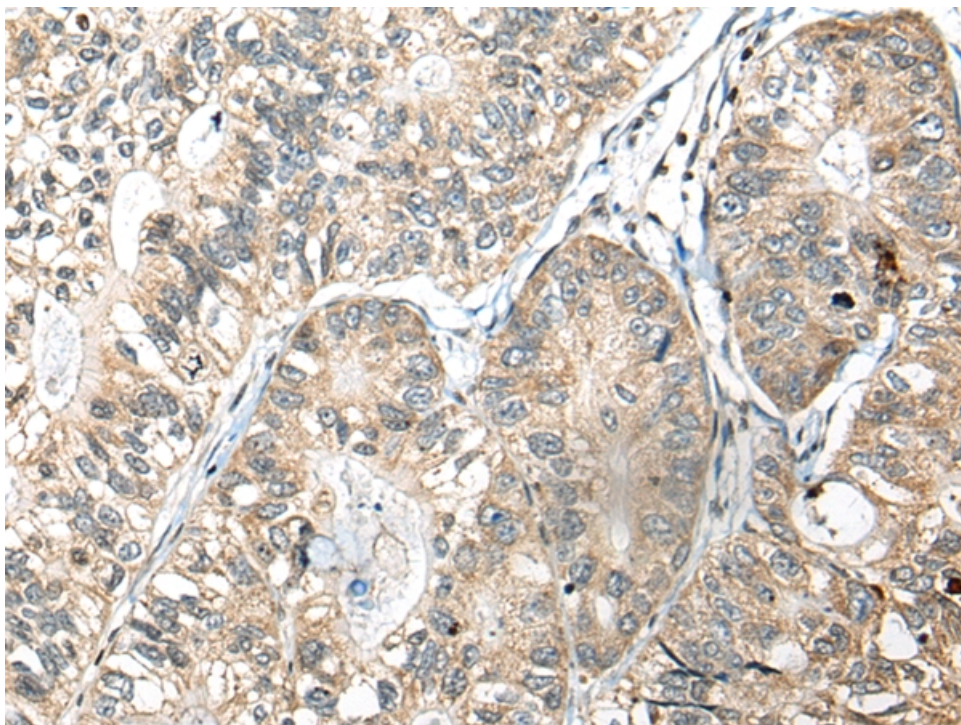
- 中文名称：兔抗 SLAMF7 多克隆抗体
- 英文名称：Anti-SLAMF7 rabbit polyclonal antibody
- 别名：SLAM family member 7; 19A; CS1; CD319; CRACC
- 抗原：SLAMF7
- 储存：冷冻（-20℃）
- 宿主：Rabbit
- 相关类别：一抗
- 反应种属：Human
- 标记物：Unconjugate
- 克隆类型：rabbit polyclonal

技术规格

Background:

Self-ligand receptor of the signaling lymphocytic activation molecule (SLAM) family. SLAM receptors triggered by homo- or heterotypic cell-cell interactions are modulating the activation and differentiation of a wide variety of immune cells and thus are involved in the regulation and interconnection of both innate and adaptive immune response. Activities are controlled by presence or absence of small cytoplasmic adapter proteins, SH2D1A/SAP and/or SH2D1B/EAT-2. Isoform 1 mediates NK cell activation through a SH2D1A-independent extracellular signal-regulated ERK-mediated pathway (PubMed:11698418). Positively regulates NK cell functions by a

	mechanism dependent on phosphorylated SH2D1B. Downstream signaling implicates PLCG1, PLCG2 and PI3K (PubMed:16339536). In addition to heterotypic NK cells-target cells interactions also homotypic interactions between NK cells may contribute to activation. However, in the absence of SH2D1B, inhibits NK cell function. Acts also inhibitory in T-cells (By similarity). May play a role in lymphocyte adhesion (PubMed:11802771). In LPS-activated monocytes negatively regulates production of proinflammatory cytokines (PubMed:23695528).
Applications:	ELISA, IHC
Name of antibody:	SLAMF7
Immunogen:	Fusion protein of human SLAMF7
Full name:	SLAM family member 7
Synonyms:	19A; CS1; CD319; CRACC
SwissProt:	Q9NQ25
ELISA Recommended dilution:	5000-10000
IHC positive control:	Human gastric cancer
IHC Recommend dilution:	30-150



mlbio 梅联生物
Good elisakit producers