

兔抗 SNRPG 多克隆抗体

中文名称: 兔抗 SNRPG 多克隆抗体

英文名称: Anti-SNRPG rabbit polyclonal antibody

别名: small nuclear ribonucleoprotein polypeptide G; SMG; Sm-G

储存: 冷冻 (-20℃)

抗原: SNRPG

宿主: Rabbit

反应种属: Human, Mouse

相关类别: 一抗

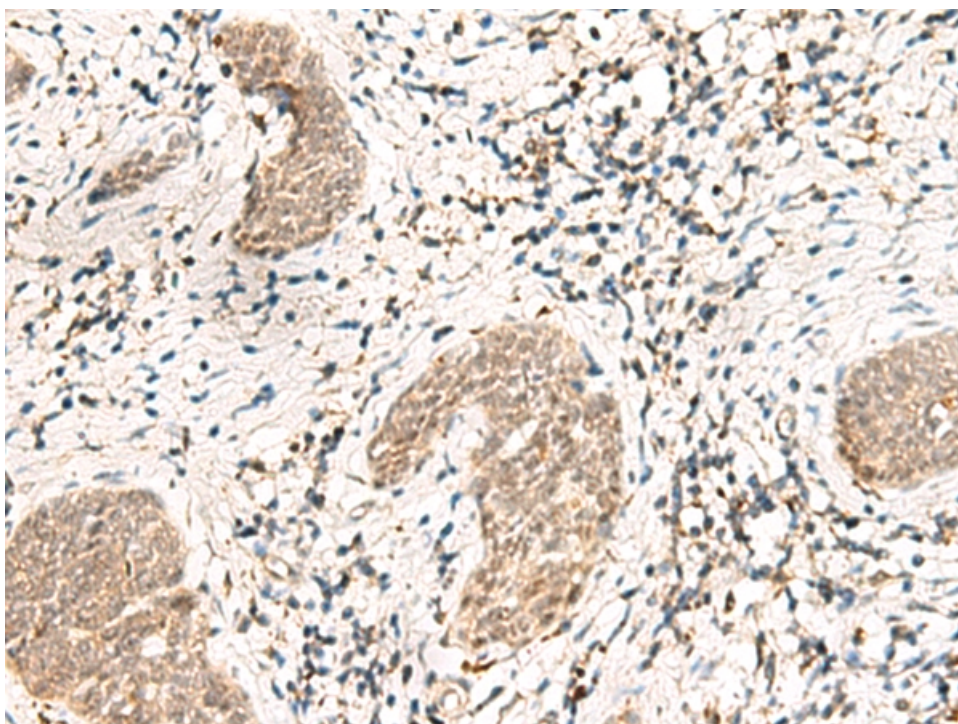
标记物: Unconjugate

克隆类型: rabbit polyclonal

技术规格

Background:	The protein encoded by this gene is a component of the U1, U2, U4, and U5 small nuclear ribonucleoprotein complexes, precursors of the spliceosome. The encoded protein may also be a part of the U7 small nuclear ribonucleoprotein complex, which participates in the processing of the 3' end of histone transcripts. Several transcript variants encoding different isoforms have been found for this gene.
Applications:	ELISA, IHC
Name of antibody:	SNRPG
Immunogen:	Synthetic peptide of human SNRPG
Full name:	small nuclear ribonucleoprotein polypeptide G

Synonyms:	SMG; Sm-G
SwissProt:	P62308
ELISA Recommended dilution:	5000-10000
IHC positive control:	Human esophagus cancer
IHC Recommend dilution:	30-150



mlbio 梅联生物
Good elisakit producers