

## 兔抗 STAT4 多克隆抗体

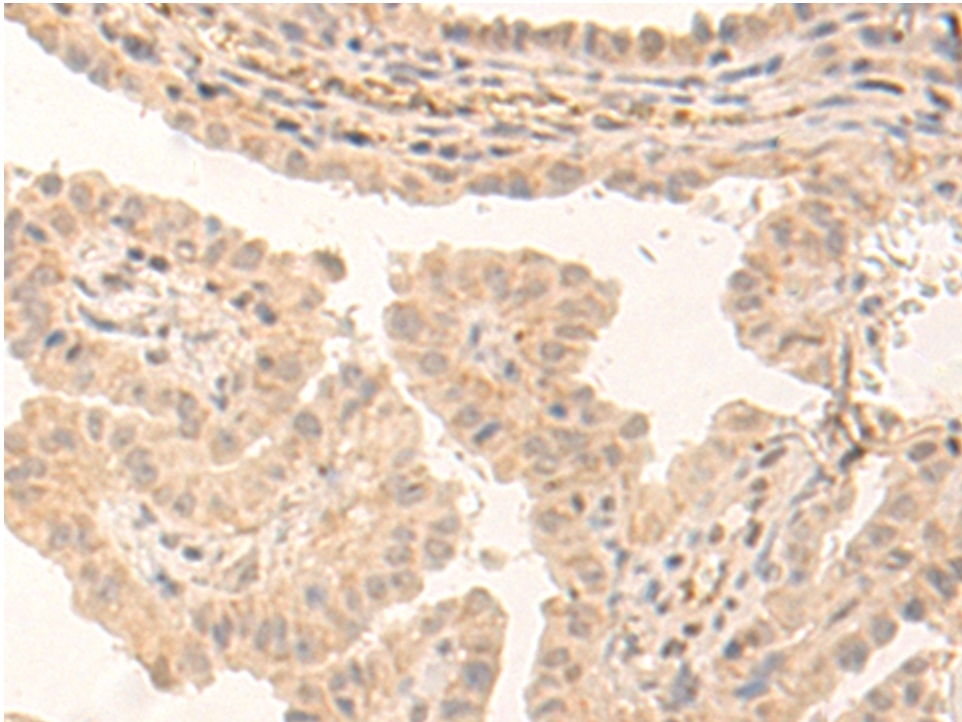
- 中文名称：兔抗 STAT4 多克隆抗体
- 英文名称：Anti-STAT4 (Ab-693) rabbit polyclonal antibody
- 别名：SLEB11
- 相关类别：一抗
- 抗原：STAT4
- 储存：冷冻（-20℃）避光
- 宿主：Rabbit
- 反应种属：Human, Mouse, Rat
- 标记物：Unconjugate
- 克隆类型：rabbit polyclonal

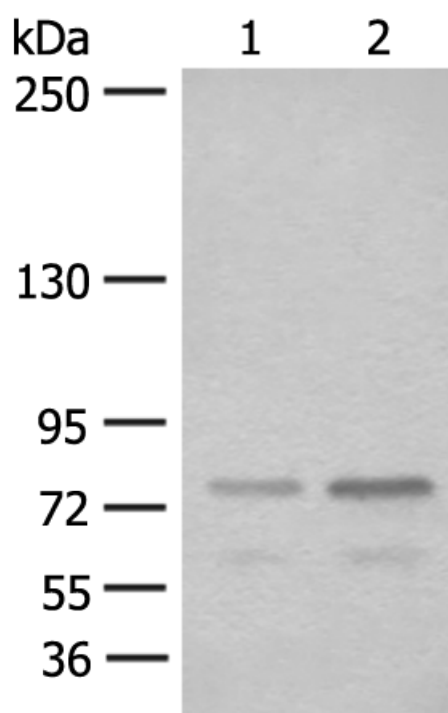
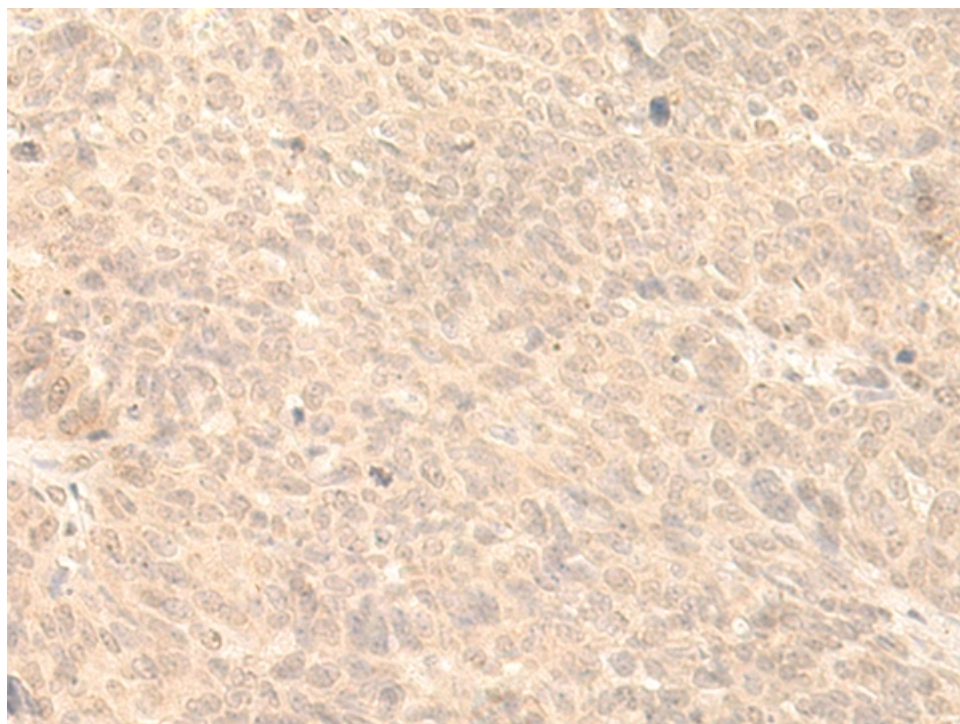
### 技术规格

**Background:**

The protein encoded by this gene is a member of the STAT family of transcription factors. In response to cytokines and growth factors, STAT family members are phosphorylated by the receptor associated kinases, and then form homo- or heterodimers that translocate to the cell nucleus where they act as transcription activators. This protein is essential for mediating responses to IL12 in lymphocytes, and regulating the differentiation of T helper cells. Mutations in this gene may be associated with systemic lupus erythematosus and rheumatoid arthritis. Alternate splicing results in multiple transcript variants that encode the same protein.

<b>Applications:</b>	WB, WB,IHC
<b>Name of antibody:</b>	STAT4
<b>Immunogen:</b>	Synthetic peptide of human STAT4 (Ab-693)
<b>Full name:</b>	signal transducer and activator of transcription 4
<b>Synonyms :</b>	SLEB11
<b>SwissProt:</b>	Q14765
<b>IHC positive control:</b>	Human breast carcinoma
<b>IHC Recommend dilution:</b>	50-300
<b>WB Predicted band size:</b>	86 kDa
<b>WB Positive control:</b>	Hela, A431 and Jurkat cells
<b>WB Recommended dilution:</b>	500-2000





**mlbio** 梅联生物  
Good elisakit producers